

Measuring instruments applied to Telemeasure II

←TelemeasureII Transmitter is available for measuring instruments with Digimatic or RS-232C output.
(About other output instruments, please contact with us.)

Connector shape of Transmitter varies depending on connecting measuring instrument.→
Please check the model by following table.For RS-232C output measuring instrument,
connect suitable RS-232C cable to Transmitter(TXG-RS,-RSQ) and the instrument.



Transmitter connector shape(photo)	Flat type 5 pin			Round type 6 pin	Flat type 10 pin	With screw fixed square type 5 pin		With screw fixed flat type 8 pin	Special connector 20 pin	Special connector 8 pin	D-SUB 9 pin·male
Transmitter model	TXG-KCX	TXG-KCS	TXG-KCM	TXG-KA	TXG-KE	TXG-KWX	TXG-KWXS	TXG-KNX	TXG-NDQ	TXG-RST	TXG-RS
Major applied measuring instrument	Mitutoyo Micrometer, etc.			Mitutoyo Micrometer, etc.	Mitutoyo Coolant Proof indicator, etc.	Mitutoyo Coolant Proof caliper, etc.		Mitutoyo Water Protection indicator, etc.	NIKON Counter for Digimicro	Tohnichi Mfg. Torque Wrench (CEM2/3)	Measuring instrument with RS-232C output
Output	Digimatic								RS-232C		

Cassette(Direct mount) type
For Mitutoyo non-waterproof caliper cassette TXG-KCX-CC
For Mitutoyo waterproof micrometer cassette TXG-KWX-CM
For Mitutoyo waterproof caliper cassette TXG-KWX-CC
Output Digimatic

*TXG-DS-IMD for IMADA Force gauge DS2(Digimatic Mini DIN 8 Pin) *TXG-ZP-IMD for IMADA Force gauge Z2(RS232C 26 Pin)

* TXG-□□□ has a jack of Φ3.5 mono-plug connecting Vectrix's hand switch BS-3.5 or Mitutoyo foot switch.

* TXG-RS,-RSQ is shipped after setting parameters such as Communication protocol&Data format of measuring instrument and its model.

Measuring instruments applied to Telemeasure II

Hand Switch BS-3.5	Rubber Cover for TelemeasureII Transmitter TC-64	Power supply set PS2032	Switch Controller SWC-5, SWC-6 or others (custom order)	OPT RS-232C Battery Box ORS-3V
<p>Connect to Q-type transmitter TXG-□□□.</p> <p><Example of use></p>	<p>Protect TelemeasureII Transmitter (TXG series) from oil adhered to hands or surrounding mist. (IP code : IP64)</p> <p><How to use></p>	<p>Content : AC adapter, Round board & Battery cap. Instead of Lithium battery (CR2032) always supplies DC 3V voltage to transmitter TXG series.</p> <p><Example of use></p>	<p>Transmit measured data of multiple transmitters sequentially with 0.5 second interval by one button. No power cable by using battery.</p> <p><Example of use></p>	<p>Supply DC 3V power to OPT RS-232C power supply measuring device. When use transmitter for this device, connect transmitter to the DSUB 9P female connector, then connect measuring device to the DSUB 9P male connector via RS232C cable designated by the device it includes 2 size-AA batteries.</p> <p><Example of use></p>

Attention!

- ◆Transmission distance 50m of TelemeasureII is standard value under good view without barrier. Real transmission distance differs from the distance depending on condition.
- ◆Do not use near medical equipment where malfunction may be caused by radio wave.

©Product,Service,Price and Product name will be changed without notice. ©"QC PRO"and "Telemeasure" are registered trademarks of Vectrix Corporation.
©"Digimatic" is registered trademark of Mitutoyo Corporation. ©Company and Product name in this leaflet are each manufacturer's registered trademark or trademark.

<Developer>

VECTRIX CORPORATION

Sadashin Kaname-Cho Bldg.5F.1-4-11 Kaname-Cho,
Toshima-Ku.Tokyo,171-0043 Japan
Tel.:+81-3-5995-3800 Fax:+81-3-5995-3831

TECA-E2102

<http://www.vectrix.co.jp/>

●Agent

telemeasure II[®]

Wireless Measuring Importing Equipments

TelemeasureII General Catalog

Selling points

POINT 1

Handwriting unnecessary

Only pushing transmission button of transmitter,measured data are input to PC automatically. No more posting error improves reliability of measurement.

POINT 2

Wireless input much improves operability

Wireless transmission makes free from troublesome output cables. Maximum transmission distance is 50m.

POINT 3

Easy ID No. setting

Able to receive data from max.100 measuring instruments with ID No.Easy to set ID No.at hand by data displayed on measuring instrument.

POINT 4

Input different measured data into one PC

Transmitter automatically converts measured data with different format depended on manufacturer of measurement equipment to common "Telemeasure Format"and sends them to Data Receiver.Software "QC PRO" series can input them to PC and make one inspection report.

POINT 5

Real-time cancel function

Canceling latest measured data by Cancel Switch supports prompt amendment of mis-input data.

POINT 6

Cost reduction of Inspection division

Radical shortening inspection time contributes reduction of labor costs.

Provide these functions...

① Multi-point measurement at a time

◎ Switch Controller (custom order)

Transmit measured data of multiple transmitters sequentially with certain interval by one button.No power cable by using battery.



◎ Wireless trigger function

Data receiver can transmit trigger signal to maximum 16 Transmitters, then receive measured data from these Transmitters.



② Interval Transmission

Transmitter can send measured data every interval from 0.4-sec. till 60 min.



③ By using "QC PRO" or "QCPROMX", OK/NG indication at every ID No. is available by PATLITE.

Realized networking by PATLITE.Nearby confirmation of result by every measuring equipment and operator is available.Therefore it is possible to continue inspection work at place where PC screen can not be seen. (PATLITE is separate selling)



*PATLITE[®]is registered trademarks of PATLITE Corporation.

Wireless input of measured data!



"Telemeasure" is wireless equipments which input measured data into PC automatically.It consists of Transmitter connected with digital measuring instrument and of Data receiver connected with PC. Software"QC PRO" can prompt make Inspection report and various Quality control charts such as Histogram.

VECTRIX CORPORATION

Basic functions and specifications of Telemeasure II

Telemeasure II Data Receiver <Data Receiver : DR-200U/R/D>

- **Transmission distance : 50m**
Use of Specified Low Power 2.4GHz band enabled max. 50m transmission and realized stable communication.
- **Strengthen collision avoidance of radio wave**
Designed to avoid radio interference among wireless LAN or Bluetooth equipments.
- **128 DR-200U's can be used at same time.**
12,800 measuring instruments can be used at the same time. (128 channels of wave form × 100 kinds of Transmitter ID No.)
- **Two-way communication**
It is possible to set two-way communication between Transmitter and Data Receiver. Wireless trigger from Data Receiver and data confirmation at Transmitter side are available.
- **Worldwide common frequency**
Adopt worldwide freq. 2.4GHz. Available in almost countries. (Please inquire of us available countries.)



<Specifications>

Receiving frequency	2.4GHz (Worldwide common frequency)
Transmission distance	50m within sight(depends on condition)
Channel number	128
PC output	DR-200U : USB / DR-200R : RS232C DR-200D : USB & Digimatic
Power	DR-200U : USB Bus Power DR-200R : AC240~100V Adapter(DC9V) DR-200D : USB Bus Power or AC100V Adapter
Size	W116.5×D72.7×H25mm
Weight	DR-200U,DR-200D : 82g / DR-200R : 91g

TelemeasureII Super-small Data Receiver <Data Receiver : DR-200mini>

- **Super-small compact design**
Only 20g weight. Suitable for notebook PC or tablet PC.
- **Reasonable price**
DR-200mini limits functions of DR-200U.



<Specifications>

Receiving frequency	2.4GHz (Worldwide common frequency)
Transmission distance	20m within sight(depends on condition)
Channel number	128
PC output	DR-200U : USB
Power	DR-200U : USB Bus Power
Size	W36×D53×H11mm(except USB cable)
Weight	DR-200U:20g (except USB cable)

※ Wireless trigger* and "Data reception acknowledgment" functions are unavailable with DR-200mini.

TelemeasureII Transmitter <Transmitter : TXG series>

By using digital display of measuring instrument, only pushing buttons on Transmitter, easy to set following functions. (Patent Pending)



<Specifications>

Transmission frequency	2.4GHz (Worldwide common frequency)
Output power	1mW(Specified low power)
Input signal	Digimatic or RS-232C
Power source	Coin battery:CR2032
Size	W32×D52×H16(except connector)
Weight	25.5g(with battery,except connector)

※Operation may vary on the type.

- ◆ Transmitter ID No.
- ◆ Receiver No. of Transmitter
- ◆ Set Receiver No. of Data Receiver by PC.
- ◆ Two-way communication
- ◆ Data trigger function (max. 16 Transmitters)
- ◆ Reception acknowledgment or not
- ◆ Interval Transmission from 0.4sec. till 60 mim.
- ◆ Buzzer sound or not

Applicable measuring instruments for TXG-RS/RSQ

- | | | |
|--|--|---|
| <ul style="list-style-type: none"> ■ ASD:(Balance)EK-i,EW-i,EJ-2000,FC-10i,FG,FX-20001, FZ,GF,GH-200,GP-30KS,GX4000,HR-100AZ,HV-60KGL, HW-60KGV ■ ACCRETECH : (SURFCOM)130A,480A (HandySurf)E-35, (Electro-column gauges)ELCOM8 (In process /post process gauge)PULCOM V10 (Compact Electric Micrometer)MINICOM-X,MINICOM-XD ■ Aikoh Engineering : (Push pull gauge)RX ■ ASKER : (Durometer)DD4 ■ Bowers METROGY : (Bore gauge)MGU2,Xtreme XT3 ■ Chino : (Digital Indicating Controller)DB1000,DI1000 (Thermometer)HN-CH Series ■ Citizen Seimitsu : (Eliemtron)EM-SA1R,(Digimtron)IPD-CC1 ■ Crystal : (Pressure Gauge)XP2i ■ DAH-CHI DENTSU : (Nutrunner)AFC3000 ■ DAISEI : (Air Micrometer)Ele-Mic92R, E93R,Ele-Mic95R(A) ■ DAKOTA : (Ultrasonic Thickness Gauge)ZX-5 ■ DMT : (Flux meter)DFM-101S ■ ERNST : (Hardness Tester)AT130 ■ GE Inspection Technologies : (Ultrasonic Thickness Gauge)CL5, (Hardness Tester)DynaMic,MIC10DL ■ Hewlett Packard : (Digital multimeter)HP34401A ■ HIOKI : (DIGITAL HITESTER)3237, (BATTERY HITESTER)BT3562,BT3563-01 (Super Megohm Meter)SM-8215 ■ Imada : (Digital Force Gauge)DSV/DST Series,ZP/Z2 Series ■ ISSOKU : (Air Micrometer)COLMEC R type (Controller for Internal Diameter)IDM-100EX MT-1 (Air Micrometer)Smp-1a ■ JAPAN INSTRUMENTATION SYSTEM : (Automatic Spring Tester)PRO-10B ■ JFE Advantech : (Ultrasonic hardness tester)SH-22 ■ Kett : (Coating Thickness Tester)LE-200J,LE-330J, LE-373,LE-370,LE-990,LZ-990 ■ Keyence : (Contact Digital Positioner)AT-V Series (RS-232C Communication Unit)DL-RS1A (Controller)LS-7600, ALS-3100,LS-9000 (Spectrum Interference Laser Positioner)SI Series | <ul style="list-style-type: none"> ■ KRONE : (Pressure Meter)KDM30 ■ Kubota : (Wireless Indicator for Crane Scale)KS-C7000HS,KS-C880 ■ Magnescale : (Display Unit)LT30 Series,LH54,LT20A,LY72,U30A ■ Mahr : (Electric Micrometer)Milltron1240 ■ Marpos : (DIGITAL COLUMN DISPLAY UNIT)E4N (COMPACT ELECTRONIC DISPLAY UNIT)QUICK READ ■ MATSUZAWA : (Hardness Tester)MXT30,RMT ■ Mettler-Toledo : (Balance)AX,MX,UMX, AB-S,APB-S,PG,PM Series,SB32000 ■ MinebeaMitsumi : (Balance)CIS1,SIWSDCP-1-35-HCE ■ Mitutoyo : (Linear gauge counter)EG-101P,EH-101P,EH-102P/D/Z/S (Counter for projector)KA,(Linear height)LH-600E (Laser Sacan Micrometer)LSM (Counter for projector)MF,MF-A,MF-B (Projector)PJ-A3000,PJ-H30A,(Data Processor)QM-Data 200 (Litematic)VL50 ■ NAPSON : (Resistance/resistivity measurement)RT-70 ■ NF Corporation : (LCR Meter)ZM2371/2372 ■ NIIGATA RIKEN SOKUJHAN : (LevelMan)RDL-1 ■ Niigata seiki : (Test Indicator)DET-234S1/2,(LevelNico)DL-S3 ■ Nikon : (Data Processor)DP-303 (Digimicro)MFC-101, TC-101 (Counter)SC-112,SC-113,SC-212,SC-E1,SC3-E1 (Projector)V-12B,V-20B ■ NIPPON DENSHOKU : (Densitometer)ND-11,(Handy spectrophotometers)NR-11A ■ Nisca:(Length measuring device)Hakarukun ■ NITTO KOHKI:(Torque Checker)DLT1133/1633 ■ Nittoseiko Analytech:(Low Resistivity Meter)Loresta GP ■ Olympus : (Ultra Sonic Thickness Gauge)25DL PLUS,38DL PLUS (Magnetic Thickness Gauge)Magna Mike8500/8600 ■ ONOSOKKI : (Noise Tester)LA-1250 ■ Panasonic : (Laser Displacement Sensor)HL-C2 | <ul style="list-style-type: none"> ■ PEACOCK : (Digital Counter)C-500/700,(Depth gauge)T2-257W ■ Sanko : (Coating Thickness Meter)CTR-2000III ■ Sarrius : (Balance)CP3202S ■ SHIMADZU : (Balance)AUX320,BL220,EL/ELB Series, LDS-15H,TX323N,UW/UJ/BX/BW Series ■ SHIMPO : (Air Micrometer)DAG/CAG 2000/3000 (Force Gauge)FGPX Series ■ SPM : (Multifunctional Display)SH13 ■ SURUGASEKI : (Laser Autocollimator Processing Unit)HIP-550 ■ SYLVAC : (Digital Indicator)S_Dial WORK NANO(805.5306) (Test Indicator)μS234 ■ TASC0 : (Radiation thermometer)THI-700+extension kit ■ Teclock : (Digital Counter)SD Series,DI-80 Series,DIX-1000 ■ TESA : (Dial Gauge)IP65, (Height Gauge)TESA-hite400, Micro Height 600/ PlusM ■ TM-Dakota : (Ultrasonic Thickness Gauge)PX-7, AMX-5 ■ TOKI SANGYO : (E type Viscometer)RE-85L ■ TONICHI : (Torque indicator)CD5 (Torque Wrench)CEM2,CEM3,CTB, CTBE,CTB2 ■ TOPCON : (Data Processor)CA-2,(Counter)ZA-15 ■ TRIMOS : (Height Gauge)Vectra Touch/Mestra Touch ■ UNION TOOL : (Digital Passameter)DS-1,DS-2 ■ URYU : (Torque Tester)UEC-4800 ■ VIBRA : (Balance)AJ-2200,JS,AJ II-220,ALE-15001H, CGH-6100,CJ Series,DJ Series,GZ II,HJ,HJH-17, HJ-K/HJR-K,Seies,HJ II-15K,HT-124R,RJ-620,SJ Series (Hydrometer)DME-220/220H ■ WANHAO:(Digital dssplay meter)DC-3000 ■ Yamato:(Platform Scale)DP-6100GP Series |
|--|--|---|

Software "QC PRO" series

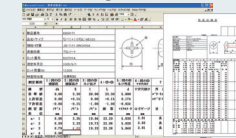
QC PRO EX

Excel Add-in software which imports measured data transmitted from Telemeasure into Excel sheet.

"QC PRO EX" is Excel Add-in software which imports measured data sent from Telemeasure Data Receiver into Excel sheet. Only allocating ID No. to read-in cell of Excel sheet currently in use, easy to set read-in area. Therefore effective reuse of inspection sheet is available.

Selling points !

- Only measuring operation makes possible to input data into cell,then inspection report is made immediately.
- Indicate data reception and OK/NG judgment by PC sound and NG red character
- By Data area and ID No. setting function, input area, input sequence and ID No. are set.
- By communication setting function, direct input without Telemeasure is available.
- Inspection report currently in use of Excel form (including Excel micro and function) is available.

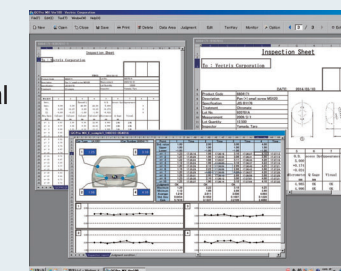


QC PROMX

"QC PRO MX" is an application software importing measured data transmitted from Telemeasure into Excel work sheet.

Selling points !

- Excel inspection report of your company is just available without any modification.
- Same time input to plural inspection reports for one PC (ID offset function)
- Prompt search for inspection item by barcode
- Easy understanding automatic OK/NG judgment : sound, NG red color and Patlite signal
- Also available for Windows tablet PC
- Easy touch panel input of numeric value by TenKey function
- Unnecessary to install Microsoft Excel
- Language selection from English, Japanese, Chinese or Korean is available.
- Visual measuring tendency by Control chart
- Human error & inspection time reduction, and costcut by using Telemeasure



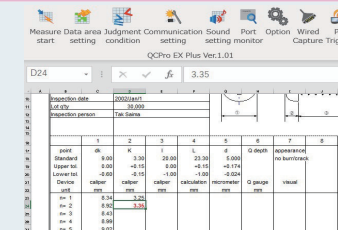
QC PRO EX Plus+

Advanced Excel add-in software.

"QC PRO EX Plus+" is Excel Add-in software which imports measured data sent from Telemeasure Data Receiver into Excel sheet. It has additional functions compared with QC PRO EX.

Selling points !

- Icon menu realized outstanding operability.
- English/Japanese/Chinese/Korean selectable
- OK/NG judgement for keyboard input and result of formula
- Common installer for Excel 32bit and 64bit edition
- Data import from Bluetooth(SPP type) measuring device
- Data import from RS-232C measuring device using wired cable (Option)
- Data import from PC <PC trigger> (Option)



QC PRO

Adopting SQL server, make stored measured data to practical use. Quality control software of standard database style

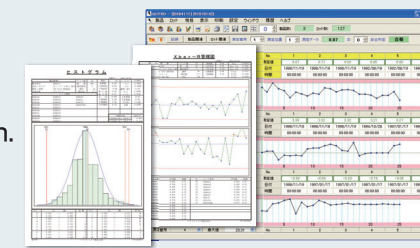
"QC PRO" is software which automatically records, calculates and analyzes measured data, and systematizes quality control. Wireless input system using TelemeasureII enables to make correct inspection report, because this is automatic system avoiding read or transcription mistakes. And this system can save mass data compactly and search them quickly, therefore realizes quality control with tracing data easily. "QC PRO" realizes cost cut of quality control work, because it can reduce much time to make inspection reports or other documents.

Selling points !

- Easy operation for person inexperienced to PC
- Real time OK/NG judgment and statistical calculation
- Save long term mass measured data compactly and search them quickly
- Able to registrate measuring information by Japanese,English,Chinese and Korean.
- Making graph of measured data by easy operation
- Easy data linking with other factories
- Patlite to individual ID No.(option)



Patlite to individual ID No.(option)



ReceiverCOM

Advanced Excel add-in software.

"ReceiverCom" is a software importing measured data transmitted from Telemeasure into active field of application software for core system operated under Windows. At the same time as importing measured data, available to inport control code such as "Enter" & "Tab".Therefore possible to continuously import while moving item.

Selling points !

- Easy Telemeasure input into user's core system
- Available to use operation screen of user's system without any change.
- Unnecessary to make complicated communication program.

