

SUNNY

SZ/N Series Zoom Stereo Microscope

NINGBO SUNNY
INSTRUMENTS CO.,LTD

NEW SZ/N



- Its design is newly of compact and comfort.
- High-performance optical component and sharp image.
- Wide viewing field, high magnification and special maximum working distance.
- New LED illumination and integrated stand.

SZ/N Series Zoom Stereo Microscope

It caters for the demand in the field of biological, medical, research, electronic industry for testing and other science and technology industrial high-precision requirements.



SZ/NB4



SZ/NBL3



SZ/NB6

Functions and characteristics

- Fully coated optical system, sharp and clear images with extremely good flatness and contrast. The images are brighter and more distinct even at the periphery of the visual field.
- Zoom objective: 0.67X-4.5X; Standard magnification: 6.7X-45X. Optional auxiliary objectives and other eyepieces are provided, and magnification range is 2X-225X.
- Standard working distance is 100mm. Special maximum working distance can provide optical auxiliary objectives, the working distance is increased to 30mm-165mm.
- Viewing Head 45° inclined, each tube allows interpupillary distance and diopter adjustments to suit the user and ergonomic design.
- Adopted new diopter adjustable eyepiece and fit optimal visual effect according to customers requirements.
- Two turret knobs for magnification change to ensure user comfort.
- New LED illumination and stand integrated.
- Power supply 110V-240V, top and bottom LED adjustable brightness.

Specification

Magnification	Standard specification: 6.7X-45X, if chooses optional eyepiece and auxiliary objective, will increase 2X-225X.	
Objective	Standard specification: 0.67X-4.5X zoom objective.	
Head	45° inclined, 360° rotatable, Inter-pupillary range from 54 to 76mm; binocular or trinocular head.	
Eyepiece	Standard specification: two diopters adjustment of range ±5mm; Wide field eyepiece WF 10X/22mm	
Optional Eyepiece	10X/22mm, 15X/16mm, 20X/12mm, 25X/9mm	
Working Distance	Standard specification: 100mm, if chooses auxiliary objective, will increase 26mm-287mm	
Auxiliary Objective	0.3X/287mm- 0.4X/217mm- 0.5X/177mm- 0.75X/117mm- 1.5X/47mm- 2X/26mm	
Focus	Two focusing knobs used for tension adjustment, adjustment range 50mm	
Top Illuminator	LED illuminator	Independent top and bottom illuminator, adjustable brightness.
	With a halogen bulb 12V/15W	
Bottom Illuminator	LED illuminator	
	With a halogen bulb 12V/15W Fluorescent lamp 230V/7W	
Photo Tube & TV Adapter	Could fixed with common camera, digital camera, simulate CCD, digital CCD	



SZ/NSTL1

Optics parameter

Objective	0.3X	0.4X	0.5X	0.75X	1X	1.5X	2.0X	
Working distance (mm)	287mm	217mm	177mm	117mm	100mm	47mm	26mm	
10X	Magnification	2.0x-13.5x	2.7x-18.0x	3.4x-22.5x	5.0x-33.8x	6.7x-45.0x	10.1x-67.5x	13.4x-90.0x
	View Field (mm)	109.5-16.3	82.1-12.2	65.7-9.8	43.8-6.5	32.8-4.9	21.9-3.3	16.4-2.4
15X	Magnification	3.0x-20.3x	4.0x-27.0x	5.0x-33.8x	7.5x-50.6x	10.1x-67.5x	15.1x-101.3x	20.1x-135x
	View Field (mm)	79.6-11.9	59.7-8.9	47.8-7.1	31.8-4.7	23.9-3.6	15.9-2.4	11.9-1.8
20X	Magnification	4.0x-27.0x	5.4x-36.0x	6.7x-45.0x	10.1x-67.5x	13.4x-90.0x	20.1x-135.0x	26.8x-180x
	View Field (mm)	59.7-8.9	44.8-6.7	35.8-5.3	23.9-3.6	17.9-2.7	11.9-1.8	9-1.3
25X	Magnification	5.0x-33.8x	6.7x-45.0x	8.4x-56.3x	12.6x-84.4x	16.8-112.5x	25.1x-168.8x	33.5x-225x
	View Field (mm)	44.8-6.7	33.6-5.0	26.9-4.0	17.9-2.7	13.4-2.0	9.0-1.3	6.7-1.0
30X	Magnification	6x-40.5x	8x-54x	10x-67.5x	15x-101x	20x-135x	30x-202x	40x-270x
	View Field (mm)	34.8-5.1	26.1-3.87	20.9-3.1	13.9-2.1	10.4-1.55	6.9-1	5.2-7.5

Base, Focus Arm and Stand



Doevtail stand

New stand, ergonomic design has made it comfortable and stable.
 Height: 260mm
 Focusing Bracket: movement range 110mm
 Drawtube size: \varnothing 76mm
 Stage size: 300mmX303mmX45mm



Pillar style for incident and transmitted LED light stand

Used with ST70SA1
 Power supply 110V-240V, the LED adjustable brightness
 Post height: 280mm
 Pillar size: \varnothing 32mm
 Stage size: 303mmX290mmX47mm



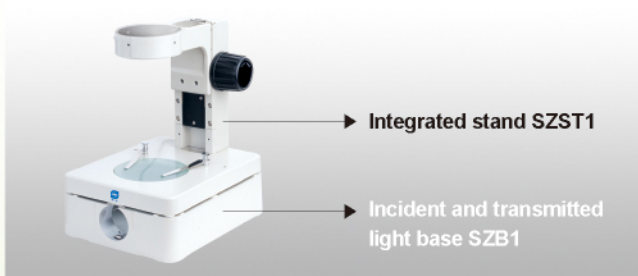
Large rectangular stand

Used with SZA1
 With clip and \varnothing 100mm white/black plate
 Post height: 248mm
 Pillar size: \varnothing 32mm
 Stage size: 260mmX320mmX12mm



Pillar style for incident and transmitted light stand

Used with SZA1
 With clip and \varnothing 100mm white/black plate
 Bottom light: 12V/15W Halogen light, brightness adjustable
 Post height: 248mm
 Pillar size: \varnothing 32mm
 Stage size: 240mmX240mmX73mm



Integrated stand

Two focusing knobs used for tension adjustment, adjustment range 114mm, used with SZB1
 With clip and \varnothing 100mm white/black plate
 Post height: 187mm
 Focusing bracket: Range 117mm,
 Drawtube size: \varnothing 76mm
 Stage size: 230mmX180mmX26mm

Incident and transmitted light base

Used with SZST1
 Built-in condenser and adjustable mirror
 With SZ-L1 light installed hole
 Stage size: 230mmX180mmX26mm



Arm and pillar stand

To observe specimen from any direction or any angle.
 Vertical post height: 380mm, Pillar size: \varnothing 32mm
 Focusing post height: 104mm, Pillar size: \varnothing 32mm
 Horizontal adjustment range: 235mm
 Stage size: 230mmX230mmX40mm



Double arm and pillar stand

The dual arm design provides exceptional stability.
 Vertical post height: 380mm, Pillar size: \varnothing 32mm
 Focusing post height: 104mm, Pillar size: \varnothing 32mm
 Horizontal adjustment range: 235mm
 Stage size: 210mmX260mmX20mm

Focusing Bracket

Focusing range: 50mm
 Pillar size: \varnothing 32mm
 Drawtube size: \varnothing 76mm
 Dimension from centerline of post to centerline of optics: \varnothing 150mm
 Designed for used with B4, B5, BL3, SZSTL1, SZSTL2 Base
 With SZ-PD1 and SZFH1 installed hole



ST70A1



SZAO

Auxiliary Objective

0.3X! 0.4X! 0.5X! 0.75X! 1.5X!
 2X auxiliary objective caters for different user.



SZDCd1

Darkfield condenser and gem clamp

Used with BL1, BL3, SZST3 Base



LY220-8

Ring light

It supplies high brightness and even illumination, and is convenient and easily to be used, long life, 220V/8W.



SZL1, SZ-T1, SZFH1, SZPD1

Light

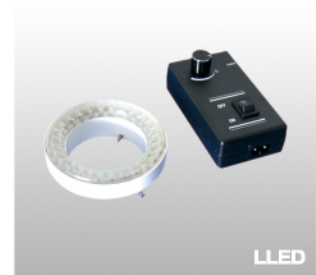
SZL1: 12V15W Halogen bulb
 SZ-T1: transformer, used with SZML1
 SZFH1: reflected illuminator bracket
 SZPD1: reflected illuminator connector



RLP/SLP/DLP

Cold light source

The unit comprises small volume, light weight, high efficiency, long life, sturdy power supply output, 100W, 150W, color temperature: 3200K, and a filter assembly.

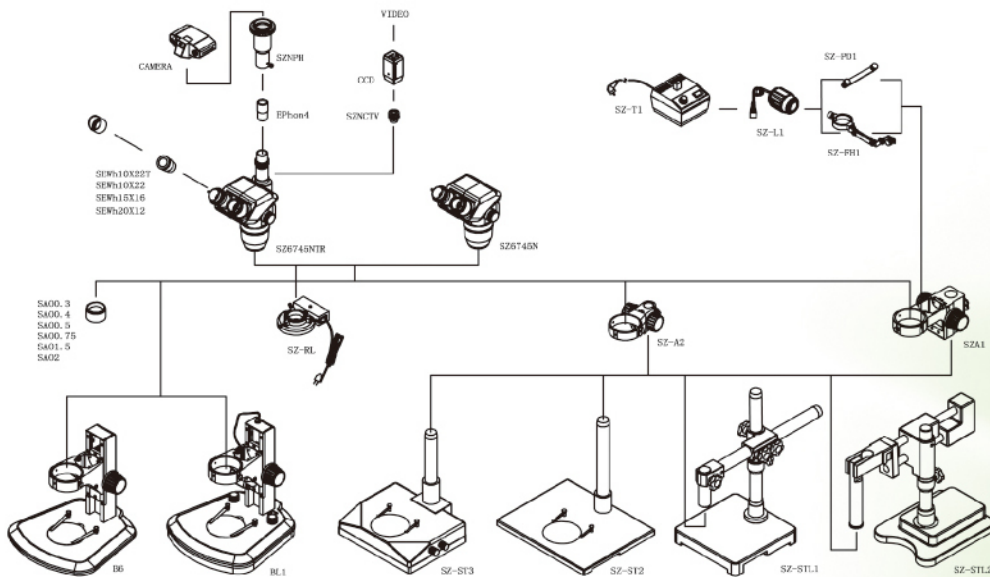


LLED

LED illuminator

It owns small size, low power consumption, long life, small volume, brightness adjustable and stable.

SZ/N Series Zoom Stereo Microscope Configuration Chart



SZ/N Series Zoom Stereo Microscope Specification

Specification		Model				Order No.
Parts	Specification	SZ45/NB4	SZ45/NBL3	SZ45/N	SZ45/NSTL1	
Eyepiece	WF10TX22mm (Diopter adjustable)	●●	●●	●●	●●	SZEWh10X22
	WF10X22mm	○○	○○	○○	○○	SZEWh10X22
	WF10Xr22mm	○	○	○	○	SZEWh10X22r
	WF15X16mm	○○	○○	○○	○○	SZEWh15X16
	WF20X12mm	○○	○○	○○	○○	SZHEWh20X10
	WF25X9mm	○○	○○	○○	○○	SZEHWh25X9
Eye-cap		●●	●●	●●	●●	SZCAP
Binocular Head	SZ6745N 45°inclind	●	●	●	●	SZ6745
	SZ9040N 45°inclind	/	/	○	/	SZ9040
Trinocular Head	SZ6745NTR 45°inclind	/	/	○	/	SZ6745TR
	SZ9040NTR 45°inclind	/	/	○	/	SZ9040TR
Auxiliary Objective	0.3X/287mm、0.4X/217mm、0.5 X/177mm	○	○	○	○	SAO0.3/0.4/0.5
	0.75X/117mm、1.5X/47mm、2X/26mm	○	○	○	○	SAO0.75/1.5/2
Focus Arm	SZMA1	/	/	○	○	SZMA1
	SZA1	/	/	○	○	SZA1
	ST70A1	●	●	○	●	ST70A1
Focus Arm	SZA2、SZA3(Industrial use)	/	/	/	○	SZA2/ SZA3
Base	SZST1	/	/	○	/	SZST1
	SZST2	/	/	○	/	SZST2
	SZMST1	/	/	○	/	SZMST1
	B4	●	/	○	/	B4
	B5	/	/	○	/	B5
	B6	/	/	○	/	B6
	SZST3	/	/	○	/	SZST3
	SZMST2	/	/	○	/	SZMST2
	SZMST3	/	/	○	/	SZMST3
	BL1	/	/	●	/	BL1
	BL3	/	●	○	/	BL3
	SZSTL1	/	/	○	●	SZSTL1
	SZSTL2	/	/	○	/	SZSTL2
SZ-B1	/	/	○	/	SZB1	
Transformer	SZ-T1	○	○	○	○	SZT1
Light	SZML1(12V/15W)	○	○	○	○	SZML1
	SZL1(12V/15W)	○	○	○	○	SZL1
	ST70L1(LED)	○	●	●	○	ST70L1
Holder	SZFH1/SZPD1	○	○	○	○	SZFH1/ SZPD1
Photo tube	ST70PH	/	/	○	/	SZPH
PK mount adaptor	C-mount and Adaptor	/	/	○	/	SZDM
TV Adaptor	1/2 CTV	/	/	○	/	SZCTV(1/2)
	1/3 CTV	/	/	○	/	SZCTV(1/3)
Darkfield	SZDCd1	/	○	○	/	SZDCd1
Gem clamp	S/ST-GC	/	○	○	/	S/STGC
Dust-proof	SZDCL	○	○	○	○	SZDCL
Rotatable Stage	SZMSGR	○	○	○	/	SZMSGR
Measurement Stage	SZMSGM1(0-25mm/150X150mm)	○	○	○	/	SZMSGM1
Ring light	220V/8W	○	○	○	○	LY220-8
Ring LED light	36/40/54 grains	○	○	○	○	LLED36/40/54
Cold light	Ring light	○	○	○	○	RLP
	Double light	○	○	○	○	DLP
	Single light	○	○	○	○	SLP

●: Standard specification ○: Optional parts



WWW.SUNNY-OPTICS.COM

Ningbo Sunny Instruments Co.,Ltd.
Add: 66-68 Shunyu Rd., Yuyao, Zhejiang
315400 China
Tel : 0086-574-62530024
Fax : 0086-574-62530066
E-mail : sales@sunny-optics.com
[Http://www.sunny-optics.com](http://www.sunny-optics.com)

