

FORCE MEASUREMENT
IMADA
Product Catalog

Force Gauges & Associated Equipment

DIGITAL FORCE GAUGE
MECHANICAL FORCE GAUGE
MOTORIZED TEST STAND

2017-12



Force Gauges

IMADA force gauges can be used for tensile tests, compression tests, peel tests, and unlimited force testing applications. We offer a wide range of gauges such as mechanical models (easy to handle), digital models (various functions equipped), and a variety of sensors.



Software

Software records force transitions graphically, calculates the statistics automatically, and equips various functions to enable you to analyze the data in detail.



Test Stands

A test stand achieves greater accuracy since it provides constant test angle/speed. Combined with a digital force gauge, a motorized test stand can activate useful functions to protect sensors from breakdown, streamline measurement, and more.



Attachments

We provide a wide range of grips and fixture to meet your force measurement needs. One force gauge can be combined with various attachments to handle a wide range of force testing applications.



Force Testing System

We provide various force testing system below to improve your productivity and meet a variety of force testing needs.

- Force-displacement analysis system
- Specialized testers for peeling etc.
- Automated force testing system
- And more

IMADA's force testers are used worldwide in R&D and quality control of every industry to assess and ensure the quality.

IMADA offers a wide range of force testing products and know-how accumulated for many decades, enabling you to measure a huge variety of "force" such as mechanical strength (breaking/deformation force), tactile sensation (softness/hardness), functionality of operational physical force, and more.



FORCE MEASUREMENT
IMADA

IMADA CO.,LTD
99 Jinnoshinden-cho aza Kanowari Toyohashi 441-8077 Japan
Telephone:+81-(0)532-33-3288 Telefax:+81-(0)532-33-3866
E-mail:info@forcegauge.net

The further information is on our website.

<http://www.forcegauge.net/>



You can see our website on your tablet.

- The contents will be changed without any notices.
- We can custom design and manufacture to meet your particular requirements.
- Please feel free to contact us or our distributor for further information of our products.
- The colors and shapes might be slightly different from the actual products.
- We show specifications partially, so please see full specifications on our website or contact us before purchase.

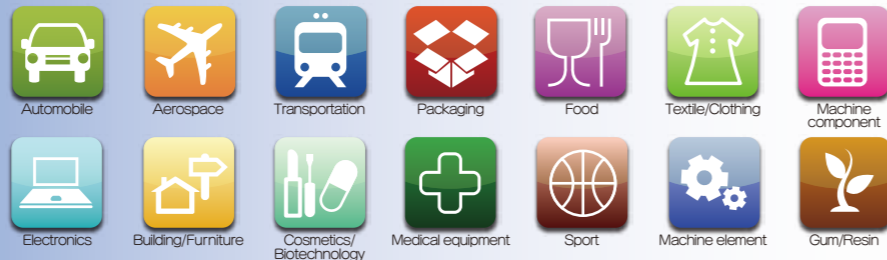
Agency

The best force measurement solution by IMADA

We are an expert of force measurement.

IMADA force gauges have been used worldwide for more than 70 years to assess and ensure quality by professionals in every industries. IMADA gauges can be used for a wide range of force testing applications such as tensile, compression, peel, and more. They can even measure ambiguous things such as “cheese stickiness” and “switch pressing force.” We provide the best force measurement solutions with our know-how and a wide range of products.

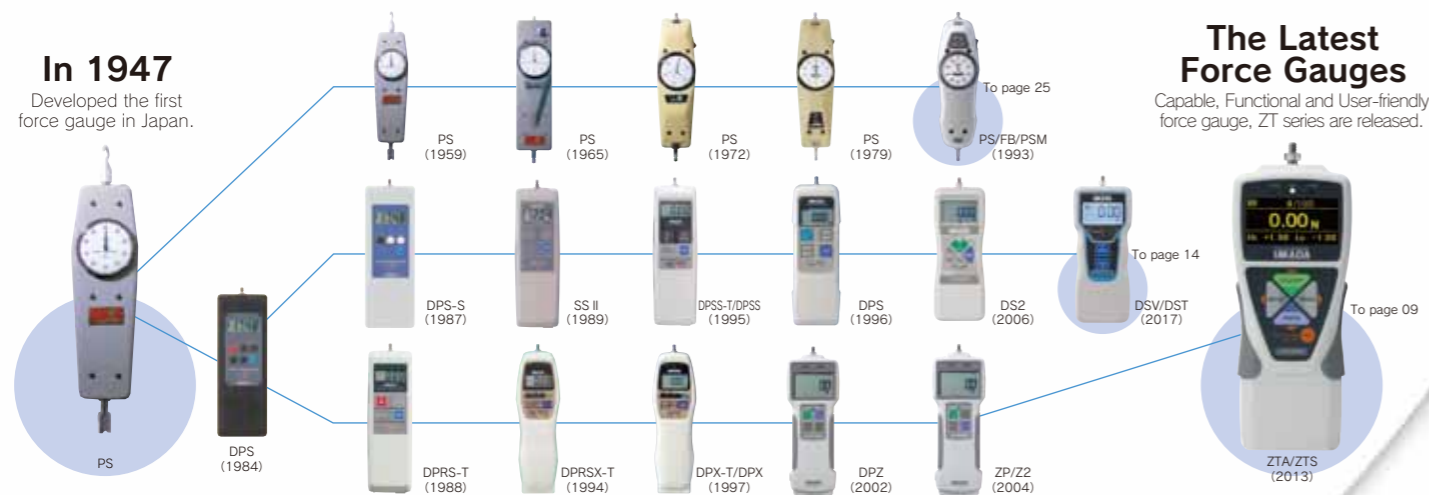
The industries using our force gauges



IMADA offers the best force measurement solution.

Force changes shape and speed of objects. Force is defined as $Mass \times Acceleration = Force$. There are many types of forces such as Tension/ Compression/Shearing/ Bending, and more. Below you can see force measuring instruments called “force gauges,” which quantify the force in units of “Newton,” “Kilogram,” and “Pound.” We provide a wide range of force gauges and related equipment to fit your measuring needs.

70 Years History of IMADA Force Gauge



Before-sales services

Test Method Consulting

We provide the best measurement solution based on our 70 years knowledge and experiences. Please feel free to contact us for any measurement concerns, for example, measurement in accordance with standards, effective measurement ways, improvement of measurement repeatability and so on.



Custom-made Orders

We also provide custom-made orders which are based on your measurement conditions and samples. Please let us know your requests such as installing a force gauge in equipment, looking for a fixture which can grip a unique shape sample, and the like.



After-sales services

Repair

We and some of our sales partners provide repair services. We are dedicated to short-term delivery.



Calibration

We and some of our sales partners also provide calibration service to keep the accuracy. Some of our products can be provided calibration services in accordance with ISO/IEC 17025:2005.



Publishing Various Certifications

Many types of certifications can be published in short terms such as Calibration Certificate, Traceability Chart and so on.



● Pull force



● Insertion force



● Pushing force



● Extraction force



● Peeling/adhesive force



● Shearing force/Tension force



● Rotating/Twisting force



● Crashing force



● Opening force



● Bending force



● Closing force



● Frictional force

From simple testing to professional one, you can easily conduct force measurement anytime, anywhere.

Force measurement is conducted to assess safety, durability, functionality, operability, and more. We offer a wide range of force gauges and related equipment to fit your measurement needs.

For use by hand

You can easily measure compression and tension force.



For use as a simple testing machine

You can combine a force gauge with a test stand to achieve high repeatability.



A Force gauges (Push Pull Scales)

They measure compression, tension, peeling force, and more. You can readily conduct a test by hand, or you can combine it with a test stand to create your own testing machine.



To page 07

B Attachments

Attachments are integral components to be combined with a force gauge or a test stand, enabling compression, tension, peeling and other force measurement.

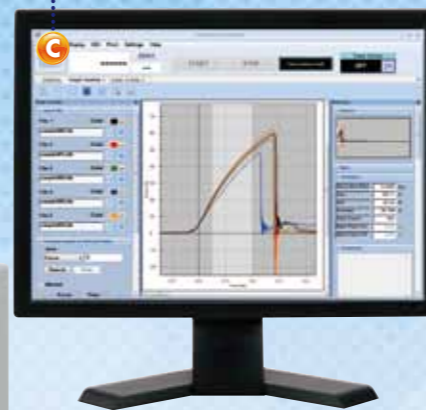


To page 35

C Software

Software draw graphs of the relationships between Force and Time or Force and Displacement. Utilize it for detailed analysis.

To page 20



D Test Stands

Test stands move a force gauge vertically or horizontally. It helps High-repeatability measurements by keeping the speeds and the angles.



To page 28

E Connecting Cables

A cable connects a force gauge and a test stand, activating the force controlling function and the preventing overload function. Besides, cables are also used to connect external equipment like PC.



To page 23

Other Product Line-up

180 Degree Peel Tester IPTS-5N/20N/50N

A specialized tester for peeling test of such as cover film of electric components and tapes
To page 49



FSA Force-Displacement Analysis Unit

Easy graph drawing of force and displacement relationships
To page 45



Texture Analyzer FRTS

Digitizing food texture such as stickiness, hardness and more

See another catalog, "Catalog for Torque testers and Food testers."



Automatic crimp tester ACT-1000N

A specialized tester for tensile strength test of crimped terminal
To page 48



Torque Gauges

For rotating and twisting force measurement

See another catalog, "Catalog for Torque testers and Food testers."



Measurement Examples

Compression Test

IMADA compression testers handle a wide range of compression testing applications such as, durability, bending, sticking, and more.



Tension Test

IMADA tension testers handle a wide range of tension testing applications such as tearing, extracting, pull-off, and more.



Peeling Test

IMADA peel testers handle a wide range of peel testing applications of such as adhesive tape, film, and more.



Coefficient of Friction Test

IMADA COF testers calculate coefficient of static Friction and average of coefficient of kinetic Friction automatically.

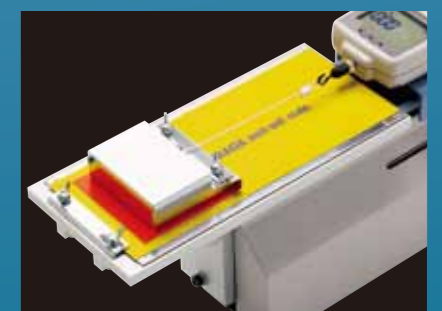


Table of contents

Category	Page	Details
Force Gauges and Related Items		
Force Gauge Comparison&Applications	07~08	A comparison table to help selecting a force gauge, and information of how to use it
Digital Force Gauges		
ZTS	09~10	Standard type force gauges with high repeatability
ZTA	11~12	Advanced force gauges with high functionality
Advanced Measurement Examples	13	Advanced measurement enabled by combination of a force gauge and a motorized test stand
DST	14	Simple force gauges
DSV	15	Handheld force gauges with high repeatability
Amplifiers & Load cells		
eZ Connect	16~19	Set of a sensor interchangeable amplifier & a load cell
eZT	16	Sensor interchangeable amplifier
Desktop Amplifier	16	An amplifier for a load cell to read force value
Load cells	17~19	Sensors to detect force (Various models are available to fit your test needs.)
Software		
Force Recorder Light	20	Affordable force-time graphing software
Force Recorder Standard	21	Force-Time graphing software for ZTS/ZTA, eZT, HTGS/HTGA and DTXS/DTXA
Force Recorder Professional	21	Force-Displacement graphing software for ZTA, eZT, HTGA and DTXA
Force Logger Plus	22	Multiple gauges managing software
ZLINK4	22	Force-Time graphing software for DSV/DST
Cables and a Printer		
Cables	23	Cables to output for external devices like PC and activate optional functions
Printer	24	A portable printer
Cable Application Examples	24	Examples of functionality expanded by cables
Built-in Linear Scale Unit	24	Linear scale unit for ZTA and eZT series
Mechanical Force Gauges		
FB	25	Simple force gauges
PS	26	Highly accurate force gauges
PSM	26	The most accurate force gauges with high resolution
PSH	26	High-capacity force gauges in capacity up to 3000N
UKT/UKK	26	Small force gauges ideal for mounting on equipment
Force Gauge Complementary Information	27	Information to select a suitable capacity, key points of managing force gauges, and more
Test Stands		
Test Stand Comparisons&Applications	28~29	Comparison table to help selecting test stand
Motorized Test Stands		
MX2	29	Digital vertical stand to improve repeatability and operating performance
MH2	29	Digital horizontal stand to improve repeatability and operating performance
EMX	30	High- performance / functional model with wide speed range and digital stroke limit function
MX	30	Simple vertical test stands
MH	30	Simple horizontal test stands
Manual Test Stands		
SV	31	Simple vertical test stands (Lever type or handle type)
HV	31	Long stroke model ideal for testing large or flexible samples
FCA	32	Able to fix a stroke (Lever type)
KV	32	Small model for low capacity (less than 50N) measurement
MS	32	Compact model helping various measurement by different ways of installation
SH	32	Horizontal test stand with a handle
Options for Test Stands	33	Available options such as extending stroke, speed range change, and more
Customized Test Stands	34	Examples of customized test stands
Attachments and Fixtures		
Attachment types and how to use	35	Basic information of attachments
Accessory Attachments	35	Standard attachments coming with force gauges
Compression Test Attachments	36	Attachments for compression testing like a bending test, a pressing test, and more
Tensile Test Attachments	37~38	Attachments for tensile testing like a tearing test, an extraction test, and more
Compression and Tensile Test Attachments	39	Attachments for both compression and tension
Coefficient of Friction Test Fixtures	39	The fixtures comes with the auto calculating software of Coefficient of Static Friction and Average of Coefficient of Kinetic Friction.
Shear Test Fixtures	39	Fixtures for soldering strength testing of QFP and TIP
Wire Harness Test Attachments	40	Wire and terminal clamps for wire harness testing
Peel Test Attachments	41	Attachments for peel test of such as tape, film coating surfaces,pull-tab and so on
Medical Equipment Attachments	42	Attachments for medical equipment such as syringe
Other Attachments	43	Varieties of tables and adapters like vice grips, XY table.
Eye Bolts and Eye Nuts for Load Cells	44	Hoisting attachments to load cells for tensile tests.
Custom-made Examples	44	Examples of custom-made attachments
Force Measurement Units/Simple Testers		
Force Displacement Analysis Unit FSA	45~47	Measurement unit for drawing force-displacement curves easily
ACT-1000N	48	An automatic crimp tester with easy operation
Crimp Tester LH-500N	48	Crimp pull tester for the tensile strength test of crimped terminal.
180 Degree Peel Tester IPTS Series	49	Peel tester exclusive for cover film of electric components and tapes
Customized Testers	50	Customized testers complying with international standards

Index

Utilize this index to find the number of the page of your desired product.

A		G		PTD-100N	
A-1/2/3/4/5/6/7/8	35	GA-10N/5000N	36	PTF-100N	41
A-40/60	36	GC-1100/1200/5000	37	PTW-10IN	41
ACT-1000N	48	GC-30	38		
ACT-T-01/ACT-T-02	48	GC-5/15	39	R	
APR-97	41	GC-60/100	38	RE-20kN	44
		GF-1/2	31		
B		GP-15/30	38	S	
B-1/2/3/4/5/6/7/8	35	GR-30/2000	38	S-1/2/3/4/5/6/7/8	35
BC-15	38	GT-10/20	39	S-40/60	36
		GT-30/2000N	43	SC-3/8	37
C		GTW-50R/50L	43	SH series	32
CA series	43			SK series	17
CB series	23	H		SKM-1000N	19
CH-500N	40	HV series	31	SP-5010/5020/5030	36
CH-5000N	40			SQ-5030/5075/5150	36
COF-2N-V/10N-V	39	I		SR-1	35
COF2-2N/10N	39	IPTS series	49	SVH-1000N	31
CP-150N	39			SVL-1000N	31
CW-500N	37,40	J		SW1 series	17
CW-5000N	40	JF6-50N	43	SW3 series	17
D		K		T	
DD2 series	18	KV-50N	32	TH-1000N/5000N	41
DF-60	38	KC-100/1001/5000	37	TKS-20N/250N	36
DM-2000N	18			TS-5000N	43
DMK series	24	L			
DST series	14	LC series	18	U	
DSV series	15	LF	39	UR-8S/8M	36
DP-1VR	24	LH-500N	48	UKK series	26
DPU series	17	LM series	18	UKT series	26
		LMT-1000N	18		
E		LMU series	17	W	
EB series	44	LOP-1000N	38	WC-2000	38
eHT	19	LU series	17		
EJ6-1000N	43			X	
EJ10-5000N	43	M		XY-500N	43
EMX-1000N	30	MED series	42		
EN-500N	44	MH series	30	Z	
eZ Connet series	16~19	MH2-500N	29	ZD1 series	18
eZT	16	MS series	32	ZD2-20kN	18
		MX series	30	ZLINK4	22
		MX2 series	29	ZTA series	11~12
FA Plus	16			ZTS series	09~10
FB series	25	P		ZU series	18
FC series	37	P45-50N	41	ZW1-10kN	18
FCA-50N	32	P90-200N/200N-EZ	41		
FOH-1	43	P180-200N	41		
Force Logger Plus	22	PC-5040/5060/5100	36		
Force Recorder Light	20	PG-2/3/4/5	36		
Force Recorder Professional	21	PGC-0505/0510/2530	37		
Force Recorder Standard	21	PGC-BC	38		
FP-50/51	37	PK1-500N	19		
FSA series	45~47	PK2-1500N	19		
FSC-1525	41	PN-50N	17		
FW-12	40	PPC-5000N	38		
		PR-500N/2500N	36		
		PS series	26		
		PSH series	26		
		PSM series	26		
		PSS series	26		

Force Gauges (Push Pull Scales)

Measuring instruments for compression/tension/peeling force

You can use a force gauge by hand, or combine a test stand to create your force testing machine. They are also called for "push pull scales" or "push pull gauges."



Digital Force Gauges

Strong Points

- You can easily read force values.
- You can connect it with a PC to analyze data particularly and manage it easily.
- Digital functions are available such as OK/NG judgment, and more.
- It is suitable for impact tests and breaking tests.

Weak Points

- You need to charge batteries.
- It is difficult to read force transition without graphing software.

DST To page 14	DSV To page 15	ZTS To page 09	ZTA To page 11
----------------	----------------	----------------	----------------

- Capacity: 2N~1000N
- Sampling speed: 1000Hz
- Accuracy: $\pm 0.2\%F.S. \pm 1$ digit



- It is ideal for simple measurements by hand.
- With its peak hold function, you can easily detect a peak value.

- Capacity: 2N~1000N
- Sampling speed: 1000Hz
- Accuracy: $\pm 0.2\%F.S. \pm 1$ digit



- Tilt-sensing-function improves the repeatability by handheld measurement.

- Capacity: 2N~5000N
- Sampling speed: 2000Hz
- Accuracy: $\pm 0.2\%F.S. \pm 1$ digit



- You can capture a peak value accurately due to its high sampling rate.
- It has a clear display.
- You can manage data easily with included software.

- Capacity: 2N~5000N
- Sampling speed: 2000Hz
- Accuracy: $\pm 0.2\%F.S. \pm 1$ digit



- Advanced Functionality Model
- It outputs and inputs displacement using a linear scale together.
- It saves data in a USB flash drive.

Simple

Functional Accurate

Mechanical Force Gauges

Strong Points

- They work without battery.
- They have durable bodies.
- You can read force transition easily.

Weak Points

- It is not suitable for impact tests and breaking tests.
- It may cause human reading error.

FB To page 25

- Capacity: 10N~500N
- Accuracy: $\pm 0.3\%F.S.$ or less



This is the most economical model

PS To page 26

- Capacity: 5N~500N
- Accuracy: $\pm 0.1\%F.S.$ or less



This is high accuracy model.
When measuring high capacity more than 500N: PSH→To Page 26

PSM To page 26

- Capacity: 20N~500N
- Accuracy: $\pm 0.1\%F.S.$ or less



This is the most accurate model with high resolution dial.

Digital force gauges

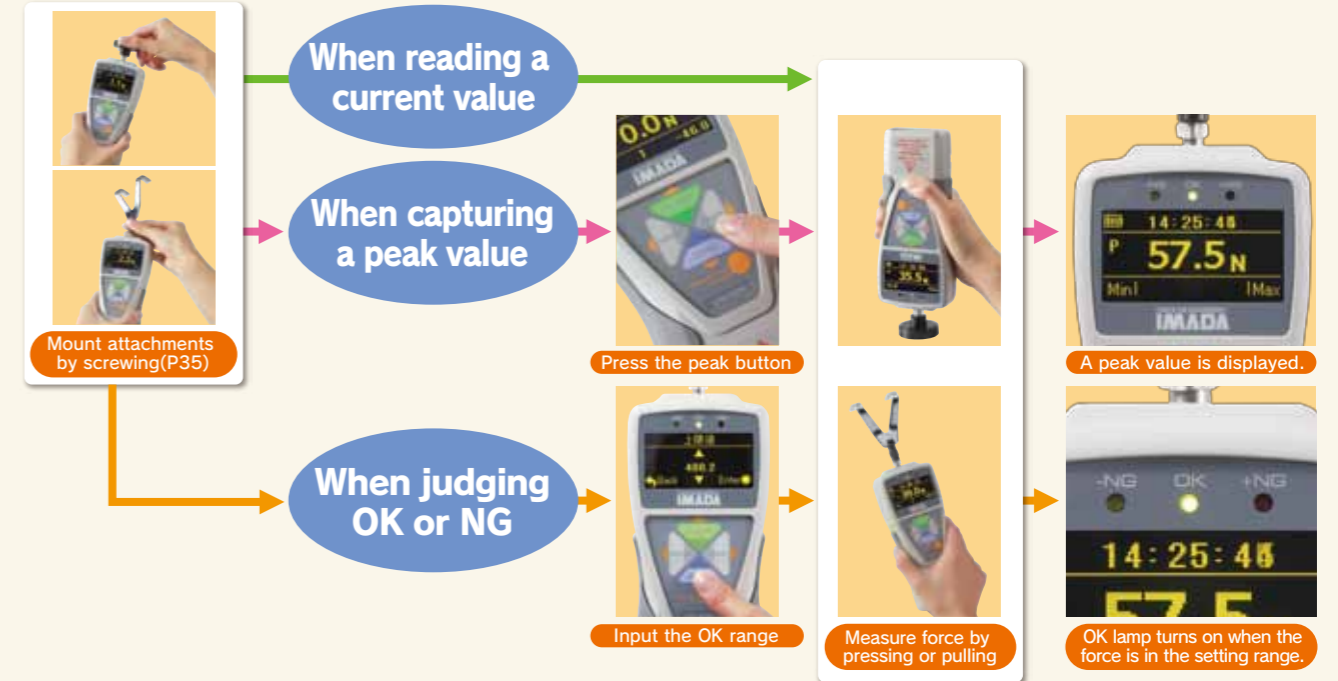
A digital force gauge has an internal sensor. It has 2 remarkable features; 1. Its digital indication prevents human reading error. 2. Connecting it to a PC, you can easily manage or analyze test data.



How to Use Digital Force Gauges (Using Example Model: ZT series)

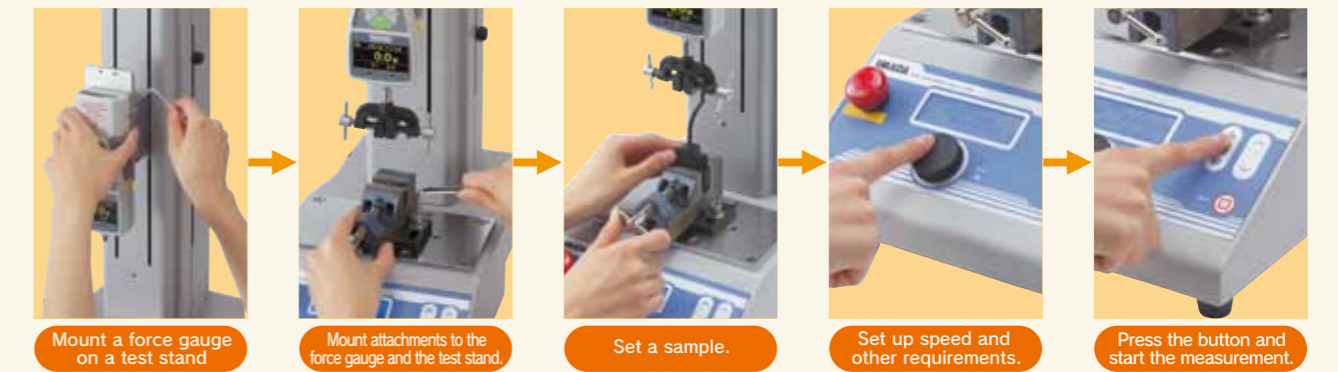
Simple Method

You can readily measure force by hand.



Reproducible Method

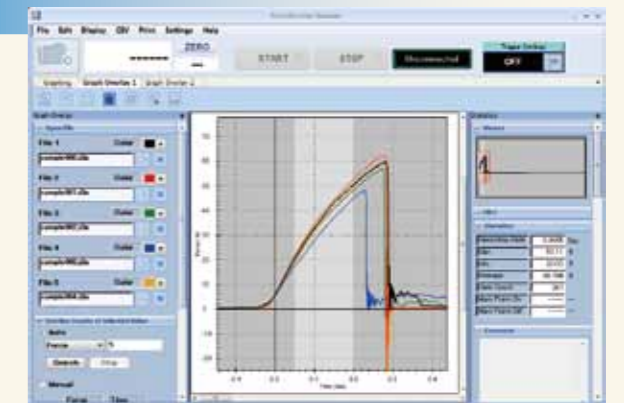
Combining a digital force gauge with a test stand (page 28), you can conduct a highly repeatable test since the test stand provides constant test speed and angle.



Graphing

With software (page 20), you can see the force transition graphically on a PC.

Connecting a digital force gauge with a PC, you can see force transition graphically and analyze data in detail.



Standard Type with High Reproducibility

ZTS series (Basic Model)

This is user-friendly and functional model. This series of gauges can be used for a wide range of measuring purposes from peak measurement to highly repeatable measurement. The gauges come with data capturing software.

Accurately / Precisely

- High Speed Sampling: 2000Hz
It follows rapid force change, capturing peak values more accurately.
- High Accuracy: ±0.2%F.S. ± 1digit

User-friendly

- High Luminance Organic EL Display
Clear organic display has excellent readability.
- 8 languages available
Setting menu in 8 languages helps easy operation.

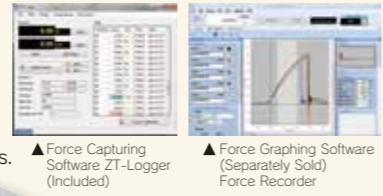
Making efficient

- OK-NG Judgment Function
You can pick out defective products easily. (+NG or -NG light goes on when the force is over or under the borderline that you have decided.)
- 3 Line Indicator
A force value is indicated in the middle tier, and you can select information as required in the upper and lower tiers.
- Connect and Link to Various External Equipment.

Compression and Tension Compatible
Size: Approx. W75×D34×H191mm
Weight: Approx. 490g

Easy Data Management on PC

- Data Capturing Software ZT-Logger is included.
-It sends 10 data/sec to PC.
-It automatically detects maximum and minimum values.
-It saves data in CSV format.
- Graphing by Optional Force Graphing Software
The software shows force vs time graphically on PC in real time (at Max. 2000Hz). The detail is in Page 20.



- Check Force Transition on Graphs
Software Force Recorder ——— To Page 21
- Print The Results
Printer DP-1VR ——— To Page 24
+Cable CB-308 ——— To Page 23
- Connect with External Devices
Cable Using Applications ——— To Page 24

- Improve Measuring Repeatability
Test Stands ——— To Page 28
- Apply Stable Force by Hand
Handle FOH-1 ——— To Page 43

Standard Type Model List

Model	Capacity	Display	Thread
ZTS-2N	2N	2.000N/2000mN(200.0gf)	M6
ZTS-5N	5N	5.000N/5000mN(500.0gf)	
ZTS-20N	20N	20.00N(2.000kgf)	
ZTS-50N	50N	50.00N(5.000kgf)	
ZTS-100N	100N	100.0N(10.00kgf)	
ZTS-200N	200N	200.0N(20.00kgf)	
ZTS-500N	500N	500.0N(50.00kgf)	
ZTS-1000N	1000N	1000N/1.000kN(100.0kgf)	

ZTS series specifications

Accuracy	+/-0.2%F.S./±1 digit(Excepted sensor separated model)
Unit of measurement(※1)	N, kgf, lbf (※1)
Display	4-digit Organic EL
Sampling rate	2000Hz (2000 data / sec) at maximum
Function	Customized display (header and footer), Peak hold (tension and compression), Internal 1000 points data memory, Comparator (judgment of OK or NG), Reversible display, Sign inversion, Zero clear timer, +NG alarm, Off timer (auto power off), Dumping, Time display
Output	Temperature: 0 to +40 degree Celsius, Humidity: 20 to 80%RH
Operating environment	USB, RS232C, Mitutoyo digimatic (※2), ±2 VDC analog output (D/A), Comparator 3 steps (-NG/OK/+NG), Overload alarm
Battery	8 hours (2 hours full charge)
Accessory	Attachments(※3), AC adapter, Inspection certificate, CD-driver(including simple software for data logging), USB cable, Carrying case.

※1 The model less than 5N can be displayed mN, the model more than 1000N can be displayed kN. Japanese domestic model does not indicate kgf and lbf units.
 ※2 Not always available for Mitutoyo digimatic products.
 ※3 Please refer to Page 35 for the detail of accessory attachments.
 ◎The weights are slightly different by the ranges.

On our website, you can see a wide range of force testing applications, and download a specification sheet of each product. Please feel free to contact us.
 ●IMADA service group telephone number: +81(0)532-33-3288
 IMADA Search <http://www.forcegauge.net/en/>

ZTS series (High Capacity Model)



Compression and Tension Compatible
Size: Approx. W83×D44.5×H221mm
Weight: Approx. 1100g

High Capacity Model List

Model	Capacity	Display	Thread
ZTS-2500N	2500N	2500N (2.500kN)	M10
ZTS-5000N	5000N	5000N (5.000kN)	

- The load capacity ranges from 2500N to 5000N.
- This model has the same functions and performance as ZTS series basic model.

- Check Force Transition on Graphs
Software Force Recorder ——— To Page 21
- Print The Results
Printer DP-1VR ——— To Page 24
+Cable CB-308 ——— To Page 23
- Improve Measuring Repeatability
Test Stands ——— To Page 28
- Connect with External Devices
Cable Using Applications ——— To Page 24

ZTS series (Separated Sensor Model)



Size (the indicator only): Approx. W75×D34×H188mm
Weight (the indicator only): Approx. 490g

Sensor separate type Model List (When selecting load cell DPU series)

Model	Capacity	Display	Thread
ZTS-DPU-2N	2N	2.000N (2000mN)	M6
ZTS-DPU-5N	5N	5.000N (5000mN)	
ZTS-DPU-10N	10N	10.00N	
ZTS-DPU-20N	20N	20.00N	
ZTS-DPU-50N	50N	50.00N	
ZTS-DPU-100N	100N	100.0N	
ZTS-DPU-200N	200N	200.0N	
ZTS-DPU-500N	500N	500.0N	

- It is ideal for installing into facilities or measuring under special circumstance due to an external sensor.
- We offer a wide range of sensors such as waterproof, wide temperature range, pen shape, and more to meet your force measurement requirement.
 ※Please select one load cell from page 17 to 19.
 ※Sensor interchangeable model eZ Connect (page 16) is recommended for those who change load cells.



This model has the same functions and performance as ZTS series basic model. (Accuracy and testing direction is determined by the sensor combined with the indicator.)

- Check Force Transition on Graphs
Software Force Recorder ——— To Page 21
- Print The Results
Printer DP-1VR ——— To Page 24
+Cable CB-308 ——— To Page 23
- Connect with External Devices
Cable Using Applications ——— To Page 24

(When selecting load cell DPU series [High capacity model])

Model	Capacity	Display	Thread
ZTS-DPU-1000N	1000N	1000N (1.000kN)	M10
ZTS-DPU-2000N	2000N	2000N (2.000kN)	
ZTS-DPU-5000N	5000N	5000N (5.000kN)	
ZTS-DPU-10kN	10kN	10.00kN	
ZTS-DPU-20kN	20kN	20.00kN	
ZTS-DPU-50kN	50kN	50.00kN	

◎Please refer to Page 17 for the detail of load cell DPU series

An example of separated sensor model combined with a load cell **ZTS-LM-500N** Load cell model Choose ZTS or ZTA
 ※In the case where you combine ZTS with a load cell, LM-500N

High-functional Type with Various Functions

ZTA series (Basic Model)

This series have the highest functionality. They have 2 remarkable points; 1. They input or output displacement. 2. They can connect to USB flash drive to save the original graph data.

ZTA has all the functions of ZTS(Page 09) with a few more additional features, including I/O for displacement, saving data to USB flash drive, and more.

ZTA series features

Input and Output Displacement

Force vs displacement data management on PC

You can use FSA series (Force-Displacement Analysis Unit) [Page 45] to manage force-displacement data on PC.

Showing displacement on a force gauge with a test stand

You can use a FA version test stand [Page 29.30] together to show displacement on a force gauge. You need an optional cable [Page 23] for that.

Measuring force-displacement with external facilities.

You can use built-in linear scale [Page 24] together with ZTA.



Force-displacement measurement unit FSA series



CE



ZTA set

Data Saving to a USB Flash Drive

Data Saving into a USB Flash Drive at 100Hz.

Series of data can be saved without PC.



Compression and Tension Compatible

Size: Approx. W75×D34×H191mm
Weight: Approx. 490g

Check Force Transition on Graphs
Software Force Recorder ——— To Page 20

Print The Results
Printer DP-1VR ——— To Page 24
+Cable CB-308 ——— To Page 23

Connect with External Devices
Cable Using Applications ——— To Page 24

Improve Measuring Repeatability
Test Stands ——— To Page 28

Apply Stable Force by Hand
Handle FOH-1 ——— To Page 43

Analyze Force-Displacement Relation
Force-Displacement Analysis Unit — To Page 45

ZTA series model list

Model	Capacity	Display	Thread
ZTA-2N	2N	2.000N/2000mN(200.0gf)	M6
ZTA-5N	5N	5.000N/5000mN(500.0gf)	
ZTA-20N	20N	20.00N(2.000kgf)	
ZTA-50N	50N	50.00N(5.000kgf)	
ZTA-100N	100N	100.0N(10.00kgf)	
ZTA-200N	200N	200.0N(20.00kgf)	
ZTA-500N	500N	500.0N(50.00kgf)	
ZTA-1000N	1000N	1000N/1.000kN(100.0kgf)	M6

※1 The model less than 5N can be displayed mN,the model more than 1000N can be displayed kN. Japanese domestic model does not indicate kgf and lbf units.
 ※2 Not always available for Mitutoyo digimatic products.
 ※3 Maximum 100 data/sec capturing series of data with a USB flash drive.
 ※4 A USB flash drive and a liner scale consume more battery. Thus, when you combine ZTA with the USB flash drive or the liner scale, the battery runs out faster.
 ※5 A USB flash drive is not included.
 ※6 Please refer to Page 35 for the detail of accessory attachments.
 ○The weights are slightly different by the ranges.

ZTA series specifications

Accuracy	+/-0.2%F.S. +/-1 digit
Unit of measurement(※1)	N, kgf, lbf(※1)
Display	4-digit Organic EL
Sampling rate	2000Hz (2000 data / sec) at maximum
Function	Customized display (header and footer), Peak hold (tension and compression), Internal 1000 points data memory, Comparator (judgement of OK or NG), Reversible display, Sign inversion, Zero clear timer, +NG alarm, Off timer (auto power off), Dumping, Time display, 1st/2nd peak, Displacement detection at force peak value, Displacement zero reset at selected force
Output	USB, RS232C, Mitutoyo digimatic (※2), 2 VDC analog output (D/A), Comparator 3 steps (-NG/OK/+NG), Overload alarm, Sub comparator 2 steps (output of large or small judgment), USB flash drive(※3), Displacement(※4)
Operating environment	Temperature: 0 to +40 degree Celsius, Humidity: 20 to 80%RH
Battery	8 hours (2 hours charge)
Accessory(※5)	Attachments (※6), AC adapter, Inspection certificate, CD driver (including simple software for data logging), USB cable, Carrying case, Adaptor for USB flash drive.

ZTA series (High Capacity Model)



ZTA (High capacity model) set

CE

Compression and Tension Compatible

Size: Approx. W83×D44.5×H221mm
Weight: Approx. 1100g

- The load capacity ranges from 2500N to 5000N.
- This model has the same functions and performance as ZTA series basic model.

- Check Force Transition on Graphs**
Software Force Recorder ——— To Page 21
- Print The Results**
Printer DP-1VR ——— To Page 24
+Cable CB-308 ——— To Page 23
- Improve Measuring Repeatability**
Test Stands ——— To Page 28
- Connect with External Devices**
Cable Using Applications ——— To Page 24
- Analyze Force-Displacement Relation**
Force-Displacement Analysis Unit — To Page 21

High Capacity Model List

Model	Capacity	Display	Thread
ZTA-2500N	2500N (250kgf)	2500N/2.500kN (250.0kgf)	M10
ZTA-5000N	5000N (500kgf)	5000N/5.000kN (500.0kgf)	

ZTA series (Separated Sensor Model)



ZTA (Separated sensor model) set

CE

Size (the indicator only): Approx. W75×D34×H188mm
Weight (the indicator only): Approx. 490g

- It is ideal for installing into facilities or measuring under special circumstance due to an external sensor.
- We offer a wide range of sensors such as waterproof, wide temperature range, pen shape, and more to meet your force measurement requirement.
 ※Please select one load cell from page 17 to 19.
 ※Sensor interchangeable model eZ Connect(page 16) is recommended for those who change load cells.



- This model has the same functions and performance as ZTA series basic model. (Accuracy and testing direction is determined by the sensor combined with the indicator.)

- Check Force Transition on Graphs**
Software Force Recorder ——— To Page 21
- Print The Results**
Printer DP-1VR ——— To Page 24
+Cable CB-308 ——— To Page 23
- Connect with External Devices**
Cable Using Applications ——— To Page 24
- Connect with a Linear Scale**
Built-in Linear Scale Unit ——— To Page 24

Sensor separate type Model List
(When selecting load cell DPU series)

Model	Capacity	Display	Thread
ZTA-DPU-2N	2N	2.000N (2000mN)	M6
ZTA-DPU-5N	5N	5.000N (5000mN)	
ZTA-DPU-10N	10N	10.00N	
ZTA-DPU-20N	20N	20.00N	
ZTA-DPU-50N	50N	50.00N	
ZTA-DPU-100N	100N	100.0N	
ZTA-DPU-200N	200N	200.0N	
ZTA-DPU-500N	500N	500.0N	M6

(When selecting load cell DPU series [High capacity model])

Model	Capacity	Display	Thread
ZTA-DPU-1000N	1000N	1000N (1.000kN)	M10
ZTA-DPU-2000N	2000N	2000N (2.000kN)	
ZTA-DPU-5000N	5000N	5000N (5.000kN)	
ZTA-DPU-10kN	10kN	10.00kN	M18P1.5 Depth 22 (female screw)
ZTA-DPU-20kN	20kN	20.00kN	

○Please refer to Page 17 for the detail of load cell DPU series.
 An example of separated sensor model combined with a load cell **ZTA-LM-500N** Load cell model Choose ZTS or ZTA
 ※In the case where you combine ZTA with a load cell, LM-500N

ZT series Advanced Measurement Examples

Force Gauge



Motorized Test Stand



Connecting them via Force Control Cable CB series,



you can maximize the functions such as the following.

※Please contact us for the combinations. (Our service group: +81-(0)532-33-3288)

Preventing Overload

◎For reducing overload risks, a test stand stops when a force gauge senses too much force over its capacity.



If the motorized stand goes beyond the overload value during its operation, it will not continue to operate.

※You cannot prevent overload in some cases.

Making Efficient



◎It automatically starts graphing and recording data.

※Graphing software is sold separately.

Automatically it starts graphing.

Force Control Functions

◎Improve operating efficiency

· The force gauge automatically returns to starting point after reaching a pre-set force limit.
· It can change the test speed when a force gauge senses a set point. Using this function, you can move the force gauge quickly until it touches a test sample, which reduces the time taken for measurement.



Go slowly when a force gauge senses 0.1N.

Pause for 60 seconds, applying 500N pressure constantly.

◎Fit for pressure/endurance tests
· It can automatically regulate the load so as to be in a pre-set range for a pre-set time period, which is fit for pressure/endurance tests.

Digital Force Gauge

Affordable & Simple Type

DST Series

Covering measurement of low, medium force area, from 2N~1000N. It features simple functions and easy handling with light weight and compactness.

Ideal for hand use

- ◎Hand fitting design
It has an easy gripping shape.
- ◎Light weight
Approx. 460g, light enough to measure with one hand
- ◎Long lasting
You can use up to 30 hours continuously (when backlight off).
- ◎USB power supply available
You can charge it from a PC or mobile battery.

Easy data management on PC

- ◎Connect via USB easily
- ◎Data capture software (Force Logger) included
 - Transfer 10 data / second to PC
 - Automatic detection of max. and min. values
 - Can be saved in CSV format



▲ Supplied force acquiring software Force Logger

Easy quality control

- ◎Pass (OK) judgment function
Easy checking for defects (It indicates OK when a force is within acceptable range.)
- ◎Notice of calibration schedule
You can set the calibration date and notify 30 days before the scheduled date
- ◎Overload alarm
Notify with a warning when the measured value approaches capacity

Compression / Tension compatible

□Size: Approx. W72×D32×H181mm
□Weight: Approx. 460g



Check force transition on graphs
Software ZLINK4 To Page 22



Apply Stable Force by Hand
Handle FOH-1 To Page 43



Improve Measuring Repeatability
Test Stand To Page 28

Model table of DST series

Model	Capacity (N)	Display	Thread
DST-2N	2N	2.000N(2000mN)	M6
DST-5N	5N	5.000N(5000mN)	
DST-20N	20N	20.00N	
DST-50N	50N	50.00N	
DST-200N	200N	200.0N	
DST-500N	500N	500.0N	
DST-1000N	1000N	1000N(1.000kN)	

Specifications of DST series

Accuracy	+/-0.2%F.S./+/- 1 digit
Unit of measurement	N(mN/kN), kg(g) (※1)
Display	4-digit
Sampling rate	1000Hz (1000 data / sec) at maximum
Battery	Approx. 30 hours (backlight off); Approx. 14 hours (backlight on) (4.5 hours full charge)
Power	Built-in Ni-MH battery, USB power supply (PC, mobile battery, AC adapter)
Operating environment	Temperature: 0 - 40° C Humidity: 20 - 80% RH
Function	Peak hold (tension and compression)/Comparator (judgement of acceptance or rejection)/Setting sensitivity (3 Levels)/Reversible display/ Reversible symbols/Setting lock/ Date time setting/Off timer/ Calibration time notice
Output	USB/RS232C
Overload alarm	Advance notice alarm: Range 90% or above Overload warning (Alarm/Display): Range 110%
Accessory	Force Logger (Data capturing software)/USB cable/AC adaptor/ Attachment (※3)/Carrying/Operation manual/Inspection certificate

※1 The model less than 5N can be displayed mN, the model more than 1000N can be displayed kN. Japanese domestic model does not indicate kgf and lbf units.
※2 Weight varies slightly depending on the range.
※3 Please refer to Page 35 for the detail of accessory attachments.
◎Weight are slightly different by the ranges.
◎Specifications for international models only. Specifications for Japanese domestic models vary on functions and performance.

High Repeatable Type for Handheld Use

DSV Series

Covering measurement of low, medium force area, from 2N~1000N.
Increase the reproducibility of measurements of hand-held, with warning function of posture change.

High-end model with a few additional functions while keeping the performance of DST series (Page 14)

Features of DSV Series

Increase reproducibility

- Detection of posture change, notification by alarm (tilt alarm)
- Data record of posture change abnormalities

Higher operability

- Internal memory
Record 1000 data with date & time / judgment results
- Continuous peak mode
Increase productivity of measurement by continuously acquiring peak value without button operation

Compression / Tension compatible

- Size: Approx. W72×D32×H181mm
- Weight: Approx. 460g

● Check force transition on graphs
Software ZLINK4 ————— To Page 22

● Improve Measuring Repeatability
Test Stand ————— To Page 28

● Apply Stable Force by Hand
Handle FOH-1 ————— To Page 43



Model table of DSV series

Model	Capacity (N)	Display	Thread
DSV-2N	2N	2.000N(2000mN)	M6
DSV-5N	5N	5.000N(5000mN)	
DSV-20N	20N	20.00N	
DSV-50N	50N	50.00N	
DSV-200N	200N	200.0N	
DSV-500N	500N	500.0N	
DSV-1000N	1000N	1000N(1.000kN)	

Specifications of DSV series

Accuracy	+/-0.2%F.S. +/- 1 digit
Unit of measurement	N(mN/kN), kg(g) (※1)
Display	4-digit
Sampling rate	1000Hz (1000 data / sec) at maximum
Battery	Approx. 30 hours (backlight off); Approx. 14 hours (backlight on) (4.5 hours full charge)
Power	Built-in Ni-MH battery, USB power supply (PC, mobile battery, AC adapter)
Operating environment	Temperature: 0 - 40° C Humidity: 20 - 80% RH
Function	Peak hold (tension and compression)/Comparator (judgement of acceptance or rejection)/Setting sensitivity(3 Levels)/Reversible display/Reversible symbols/Setting lock/ Date time setting/ Off timer/Calibration time notice/Tilt alarm/Continuous peak mode/Internal memory(1000 data)
Output	USB/RS232C
Overload alarm	Advance notice alarm: Range 90% or above Overload warning (Alarm/Display): Range 110%
Accessory	Force Logger (Data capturing software)/USB cable/AC adaptor/ Attachment (※3)/Carrying/Operation manual/Inspection certificate

※1 The model less than 5N can be displayed mN, the model more than 1000N can be displayed kN. Japanese domestic model does not indicate kgf and lbf units.
※2 Weight varies slightly depending on the range.
※3 Please refer to Page 35 for the detail of accessory attachments.
◎Weight are slightly different by the ranges.
◎Specifications for international models only. Specifications for Japanese domestic models vary on functions and performance.

Load Cells and Amplifiers

Load cells convert sensing force to electric signal. You need an amplifier to indicate the force value measured by load cells. They are ideal for built-in or use under unique environment such as dangerous / narrow / dusty and the like.

eZ Connect series

[This is recommended in these cases below.]

Measure things from low load to high load.

Carry out different types of tests such as tension and torque.

Keep a spare load sensor to reduce risks in operation.

Sensor Interchangeable Amplifier eZT

Precise

- You can capture test data precisely due to its high sampling rate (Max.2000Hz).

Easy

- No additional adjustment is needed to replace load cells.

Multifunctional

- It has many useful functions such as OK/NG judgement, saving data in USB flash drive, and more.

- Size (Amplifier only) : Approx. W75×D34×H188mm
- Weight (Amplifier only) : Approx. 490g

● Check Force Transition on Graphs
Software Force Recorder ————— To Page 20

● Print The Results
Printer DP-1VR ————— To Page 24
+Cable CB-308 ————— To Page 23

● Connect with External Devices
Cable Using Applications ————— To Page 24

● Connect with a Linear Scale
Built-in Linear Scale Unit ————— To Page 24



eZ Connect series are...

- eZ Connect is composed of an amplifier and load cells. You can replace load cells without additional adjustment.
 - You can choose a load cell from page 17 to 19 to connect with the amplifier. Available load cells have a mark
 - Its overall accuracy is calculated as the total of the accuracy of the amplifier (+/- 0.2%F.S.) and a load cell connected with it.
 - We do not offer inspection certificate when we ship it out. Therefore, please calibrate it by yourself, or request calibration for each combination if needed (available at a charge).

eZT Specifications

Model	eZT
Accuracy	+/-0.2%F.S. (※1)
Unit of measurement	Depends on load cell and settings *(N,kN,kgf,lbf N-m,N-cm,kgf-m,kgf-cm,lbf-in,ozf-in)
Display	4-digit
Display update	16 / sec
Sampling rate	2000 data / sec at maximum (※2)
Functions	Customized display (header and footer), Peak hold (tension and compression), Internal 1000 points data memory, Comparator (judgement of OK or NG), Reversible display, Sign inversion, Zero clear timer, +NG alarm, Off timer (auto power off), Dumping, Time display, 1st/2nd peak/Displacement detection at force peak value, Displacement zero reset at selected force, setting lock
Output	USB, RS232C, Mitutoyo digimatic (※3), 2 VDC analog output (D/A), Comparator 3 steps (-NG/OK/+NG), Overload alarm, Sub comparator 2 steps (output of large or small judgment), USB flash drive, Displacement
Operating environment	Temperature: 0 to +40 degree Celsius, Humidity: 20 to 80%RH
Battery	8 hours (2 hours charge) (※4)
Accessories	AC adapter, CD driver (including simple software for data logging), USB cable, Operation manual, Carrying case, Adaptor for USB flash drive (※5)

※ Japanese domestic model does not indicate kgf (kgf-m, kgf-cm) and lbf (lbf-in, ozf-in).
※1 The accuracy of load cell is added during measurement.
※2 You can save up to 100 data/sec in USB flash drive (selectable among 1, 50, and 100 /sec)
※3 You cannot use it with Mitutoyo digimatic products in some cases.
※4 A USB flash drive and a liner scale consume more battery.
Thus, when you combine ZTA with the USB flash drive or the liner scale, the battery runs out faster.
※5 USB flash drive is not included.
◎ If you would like to use this amplifier combined with a test stand, please contact us or our sales partner.

Models of load cells for eZ Connect series

● Add "e" to model name of a load cell for eZ Connect series as stated below.

Example
Normal load cell: DPU-50N

Load cell for eZ Connect series: eDPU-50N

Desktop Amplifier FA Plus

- This desktop amplifier is ideal for being incorporated in your equipment. With its input/output functions, you can interlock it with your equipment.



- Size: W210×D160×H99mm
- Weight: Approx. 1.5kg

Accuracy

- High speed sampling :2000Hz
It shows force value precisely and even follows rapid force change due to its high sampling rate.

Synchronized with external equipment

- You can use it as a part of factory automation equipment using input and output signals.

Measurement unit	N(kN), kgf(gf), lbf(ozf)
Display	4 digit LTD
Sampling rate	2000Hz (2000 data/ sec)
Functions	Peak hold, Comparator (OK/NG judgment), Setting sensitiveness and so on.
Output function	USB/ Serial (RS232C)/ Analog (Approx. ±2V), Each comparator/ Overload caution
Accessory	Power cable, Spare fuse, USB cable, Driver CD-ROM, Load Capturing software FAP logger

You can connect this amplifier with all load cells from page 17 to 19 except SKM-1000N and eZ Connect load cells. You can replace load cells in the most cases although they need adjustments. However, some load cells are incompatible, and they cannot be combined with an amplifier. Please contact us for the details.

Load Cells

for Compression and Tension

Standard Type DPU

Easy built-in shape to external equipment.



It measures force by mounting an attachment on the thread (the male screw part).

Capacity	2N~500N
Accuracy	±0.2%F.S. or less
Size	Approx. W58×D21×H71~W72×D21×H73mm
Cable Length	Approx. 2m

Model	Capacity	Thread
DPU-2N	2N	Male Screw M6P1.0
DPU-5N	5N	
DPU-10N	10N	
DPU-20N	20N	
DPU-50N	50N	
DPU-100N	100N	
DPU-200N	200N	
DPU-500N	500N	

for Compression and Tension

High Capacity Type DPU

Easy built-in shape to external equipment.



It measures force by mounting an attachment on the thread (the male screw part).

Capacity	1000N~20kN
Accuracy	±0.2%F.S. or less
Size	Approx. W58×D26×H130~W88×D42×H155mm
Cable Length	Approx. 3m

Model	Capacity	Thread
DPU-1000N	1000N	Male Screw M10P1.5
DPU-2000N	2000N	
DPU-5000N	5000N	
DPU-10kN	10kN	
DPU-20kN	20kN	
※There is no thread on the load cell head while it equips a female screw M18 P1.5 Depth 22. The thread is able to attach on the head optionally.		

for Compression and Tension

Small Type SW1

Able to connect samples to the two sides of the sensor.



You can fix it with female screws or connect it to eye bolts to measure force.

Capacity	100~5000N
Accuracy	±0.5%F.S. or less
Size	Approx. W40XD20XH40mm
Cable Length	Approx. 0.5~2m (Curl cable)

Model	Capacity	Thread
SW1-100N	100N	Female Screw M6P1.0
SW1-200N	200N	
SW1-500N	500N	Female Screw MBP1.25
SW1-1000N	1000N	
SW1-2000N	2000N	Female Screw M10P1.5
SW1-5000N	5000N	
※Please contact us if the users need the thread.		

for Compression and Tension

High Capacity Type SW3

Able to connect samples to the two sides of the sensor.



You can fix it with female screws or connect it to eye bolts to measure force.

Capacity	10kN~20kN
Accuracy	±0.5%F.S. or less
Size	Approx. W80XD25XH80mm
Cable Length	Approx. 5m

Model	Capacity	Thread
SW3-10kN	10kN	Female Screw M16P2.0
SW3-20kN	20kN	
※Please contact us if the users need the thread.		

for Compression and Tension

Extra Small Type LMU

Sensor part diameter is Approx. φ18mm.



It measures force by mounting an attachment on the thread (the male screw part).

Capacity	50~500N
Accuracy	±1.0%F.S. or less
Size	Approx. φ18XH25mm
Cable Length	Approx. 2m

Model	Capacity	Thread
LMU-50N	50N	Male Screw M5P0.8
LMU-100N	100N	
LMU-200N	200N	
LMU-500N	500N	

※1 Conversion adaptor CA-F5T6 (Page 43) is required when M6 screw attachments mounting on the load cell.

for Compression and Tension

Small Type LU

Able to connect samples to the two sides of the sensor.



You can fix it with female screws or connect it to eye bolts to measure force.

Capacity	50~2000N
Accuracy	±1.0%F.S. or less
Size	Approx. φ28XH35mm
Cable Length	Approx. 3m

Model	Capacity	Thread
LU-50N	50N	Female Screw MBP1.25
LU-100N	100N	
LU-200N	200N	
LU-500N	500N	
LU-1000N	1000N	
LU-2000N	2000N	

Conversion adaptor CA-BT6 (for M6 screw)/CA-BT10 (for M10 screw) (Page 43) is required when M6/M10 screw attachments mounting on the load cell.

for Compression and Tension

Pen Type PN-50N

Ideal for touching force measurements such as small manipulation force.



It measures force by mounting an attachment on the thread (the male screw part).

Capacity	50N
Accuracy	±2.0%F.S. or less
Size	Approx. φ20XH90mm
Cable Length	Approx. 2m

Model	Capacity	Thread
PN-50N	50N	M6P1.0

for Compression or Tension

High Accuracy Type SK

Durable sensor.



You can mount metal fittings in 3 holes as required.

Capacity	2000N~20kN
Accuracy	±0.25%F.S. or less
Size	Approx. W130XD30XH30mm
Cable Length	Approx. 5m

Model	Capacity
SK-2000N	2000N
SK-5000N	5000N
SK-10kN	10kN
SK-20kN	20kN

for Compression or Tension

Small Type ZD

Small-size sensor in capacity from 1000N up to 20kN.



It measures force by mounting an attachment on the thread (the male screw part)

Capacity	1000N~20kN
Accuracy	±0.5%F.S. or less
Size	Approx. W78XD30XH44~W116XH38XD46mm
Cable Length	Approx. 3m

Model	Capacity	Thread
ZD1-1000N	1000N	Male Screw M12P1.75
ZD1-2000N	2000N	
ZD1-5000N	5000N	Male Screw M20P1.5
ZD1-10kN	10kN	
ZD2-20kN	20kN	

※Please choose tension or compression

for Compression

General Type LC

Coin type load cell.



It measures force by applying compression on the top of projection.

Capacity	500N~20kN
Accuracy	±0.5%F.S. or less
Size	Approx. φ50XH25mm
Cable Length	Approx. 5m

Model	Capacity
LC-500N	500N
LC-1000N	1000N
LC-2000N	2000N
LC-5000N	5000N
LC-10kN	10kN
LC-20kN	20kN

for Compression

High Accuracy Type DD2

High accuracy model. Available for high capacity measurement.



It measures force by applying compression on the top of projection.

Capacity	5000N~20kN
Accuracy	±0.5%F.S. or less
Size	Approx. φ94XH48mm
Cable Length	Approx. 5m

Model	Capacity
DD2-5000N	5000N
DD2-10kN	10kN
DD2-20kN	20kN

for Compression

Small Type LM

It can be inserted in narrow spaces due to the coin shape.



It measures force by applying compression on the top of projection.

Capacity	10N~20kN
Accuracy	10N~10kN: ±2.0%F.S. or less 20kN: ±3.5%F.S. or less
Size	Approx. φ12XH4~φ21XH10mm
Cable Length	10N~2000N: Approx. 2m 5000N~20kN: Approx. 3m

Model	Capacity
LM-10N	10N
LM-20N	20N
LM-50N	50N
LM-100N	100N
LM-200N	200N
LM-500N	500N
LM-1000N	1000N
LM-2000N	2000N
LM-5000N	5000N
LM-10kN	10kN
LM-20kN	20kN

for Compression and Tension

Wide Temperature Range Type LMT-1000N

It can be used in temperatures between -40 degrees Celsius and +130 degrees Celsius.



It measures force by applying compression on the top of projection.

Capacity	1000N
Accuracy	±1.0%F.S. or less
Size	Approx. φ14XH4.3mm
Cable Length	Approx. 2m

Model	Capacity
LMT-1000N	1000N

for Tension

High Capacity Type ZU

Two rod ends are included. Small-size sensor in capacity from 10kN up to 20kN.



Force is measured by attaching a sample on the rod end.

Capacity	10kN~20kN
Accuracy	±1.0%F.S. or less
Size	Approx. φ28XH170~φ50XH234mm (Except the rod ends.)
Cable Length	Approx. 5m

Model	Capacity
ZU-10kN	10kN
ZU-20kN	20kN

for Tension

Crane Scale Type ZW1-10kN

A hook is included. Light weight and user-friendly.



It can be used as a crane scale.

Capacity	10kN
Accuracy	±1.0%F.S. or less
Size	Approx. φ22XH70mm (Except the fittings and the hook)
Cable Length	Approx. 0.5~2m (Curl cable)

Model	Capacity
ZW1-10kN	10kN

Special Use Load Cell

Door Tester DM-2000N

Exclusively for measuring closing force of automatic doors and revolving doors.



It measures force by making the blue sensor part touch a closing door.

Capacity	2000N
Accuracy	±2.0%F.S. or less
Size	Approx. W94XD66XH380mm
Cable Length	Approx. 2m

Model	Capacity
DM-2000N	2000N

※Load cells with the mark (eZ) can be combined with eZ Connect series. eZ Connect series are comprised of a sensor interchangeable amplifier and a load cell. Put "e" at the head of a load cell model for eZ Connect to tell it apart from normal model. Please see the page 16 for the details.

Load Cells

<p>Special Use Load Cell</p> <p>Closing Force of Car Windows</p> <p>SKM-1000N</p> <p>Exclusively for automatic closing force of car windows.</p> <p>IP65</p>  <p>Put this sensor between a car window and its frame to measure the closing force.</p> <table border="1"> <tr><td>Capacity</td><td>1000N</td></tr> <tr><td>Accuracy</td><td>±1.0%F.S. or less</td></tr> <tr><td>Size</td><td>Approx. W70XD50XH30mm</td></tr> <tr><td>Cable Length</td><td>Approx. 200mm (Flexible arm)</td></tr> </table> <p>This product is united to the indicator. The united model: ZTS-SKM-1000N/ZTA-SKM-1000N</p> <table border="1"> <tr><td>Model</td><td>Capacity</td></tr> <tr><td>SKM-1000N</td><td>1000N</td></tr> </table>  <p>※You cannot combine it with FA Plus due to its flexible arm.</p>	Capacity	1000N	Accuracy	±1.0%F.S. or less	Size	Approx. W70XD50XH30mm	Cable Length	Approx. 200mm (Flexible arm)	Model	Capacity	SKM-1000N	1000N	<p>Special Use Load Cell</p> <p>Handbrakes Force of Two-Wheelers</p> <p>PK1-500N</p> <p>Exclusively for gripping hand breaks force of two-wheelers.</p> <p>IP65</p>  <p>Put this sensor on hand breaks and grip them together to measure the force.</p> <table border="1"> <tr><td>Capacity</td><td>500N</td></tr> <tr><td>Accuracy</td><td>±1.0%F.S. or less</td></tr> <tr><td>Size</td><td>Approx. W102XD35XH40mm</td></tr> <tr><td>Cable Length</td><td>Approx. 1.5m</td></tr> </table> <table border="1"> <tr><td>Model</td><td>Capacity</td></tr> <tr><td>PK1-500N</td><td>500N</td></tr> </table> 	Capacity	500N	Accuracy	±1.0%F.S. or less	Size	Approx. W102XD35XH40mm	Cable Length	Approx. 1.5m	Model	Capacity	PK1-500N	500N	<p>Special Use Load Cell</p> <p>Foot Brakes Force of Cars</p> <p>PK2-1500N</p> <p>Exclusively for stepping foot brakes of cars.</p> <p>IP65</p> <p>eZ</p>  <p>It measures footbrake manipulating force by putting the load cell on foot breaks and stepping them together.</p> <table border="1"> <tr><td>Capacity</td><td>1500N</td></tr> <tr><td>Accuracy</td><td>±1.0%F.S. or less</td></tr> <tr><td>Size</td><td>Approx. W50XD70XH27mm</td></tr> <tr><td>Cable Length</td><td>Approx. 1.5m</td></tr> </table> <table border="1"> <tr><td>Model</td><td>Capacity</td></tr> <tr><td>PK2-1500N</td><td>1500N</td></tr> </table> 	Capacity	1500N	Accuracy	±1.0%F.S. or less	Size	Approx. W50XD70XH27mm	Cable Length	Approx. 1.5m	Model	Capacity	PK2-1500N	1500N	<p>For Torque (only for eZ connect)</p> <p>Torque Load Cell</p> <p>eHT series</p> <p>It measures turning/twisting force.</p> <p>eZ</p>  <p>It measures torque using optional attachments such as pin chuck, socket holder, torque driver etc. Please see another torque catalog for the details of the attachments.</p> <table border="1"> <tr><td>Capacity</td><td>0.5N-m~10N-m</td></tr> <tr><td>Accuracy</td><td>±0.5% F.S. or less</td></tr> <tr><td>Size</td><td>φ38×138mm</td></tr> <tr><td>Cable length</td><td>Approx. 0.5~1m (curl cable)</td></tr> </table> <table border="1"> <tr><td>Model</td><td>Capacity</td></tr> <tr><td>eHT-0.5N</td><td>50N-cm(※1)</td></tr> <tr><td>eHT-2N</td><td>2N-m(200N-cm)</td></tr> <tr><td>eHT-5N</td><td>5N-m(500N-cm)</td></tr> <tr><td>eHT-10N</td><td>10N-m(1000N-cm)</td></tr> </table> <p>※1 Displayed unit is "N-cm" only. ※You can switch N-m(N-cm) to kgf-m(kgf-cm) or lbf-in(ozf-in).</p>	Capacity	0.5N-m~10N-m	Accuracy	±0.5% F.S. or less	Size	φ38×138mm	Cable length	Approx. 0.5~1m (curl cable)	Model	Capacity	eHT-0.5N	50N-cm(※1)	eHT-2N	2N-m(200N-cm)	eHT-5N	5N-m(500N-cm)	eHT-10N	10N-m(1000N-cm)
Capacity	1000N																																																								
Accuracy	±1.0%F.S. or less																																																								
Size	Approx. W70XD50XH30mm																																																								
Cable Length	Approx. 200mm (Flexible arm)																																																								
Model	Capacity																																																								
SKM-1000N	1000N																																																								
Capacity	500N																																																								
Accuracy	±1.0%F.S. or less																																																								
Size	Approx. W102XD35XH40mm																																																								
Cable Length	Approx. 1.5m																																																								
Model	Capacity																																																								
PK1-500N	500N																																																								
Capacity	1500N																																																								
Accuracy	±1.0%F.S. or less																																																								
Size	Approx. W50XD70XH27mm																																																								
Cable Length	Approx. 1.5m																																																								
Model	Capacity																																																								
PK2-1500N	1500N																																																								
Capacity	0.5N-m~10N-m																																																								
Accuracy	±0.5% F.S. or less																																																								
Size	φ38×138mm																																																								
Cable length	Approx. 0.5~1m (curl cable)																																																								
Model	Capacity																																																								
eHT-0.5N	50N-cm(※1)																																																								
eHT-2N	2N-m(200N-cm)																																																								
eHT-5N	5N-m(500N-cm)																																																								
eHT-10N	10N-m(1000N-cm)																																																								

※Load cells with the mark (eZ) can be combined with eZ Connect series. eZ Connect series are comprised of a sensor interchangeable amplifier and a load cell. Put "e" at the head of a load cell model for eZ Connect to tell it apart from normal model. Please see the page 16 for the details.

What is IP?

IP (International Protection) is a standard which is based on IEC Standard 529 for solid foreign materials, electric devices for water and cabinet.

(Explanation of the IP code)

IP X X

- The second code (IP 0 to 8 for water penetration)
- The first code (IP 0 to 8 for human body and solid foreign materials)

(Some IMADA load cells are IP67 or IP65.)

IP 6 7

- Ingress of water in harmful quantity shall not be possible when the enclosure is immersed in water under defined conditions of pressure and time (up to 1 m of submersion for 30 minutes.)
- No ingress of dust; complete protection against contact (dust tight)

IP 6 5

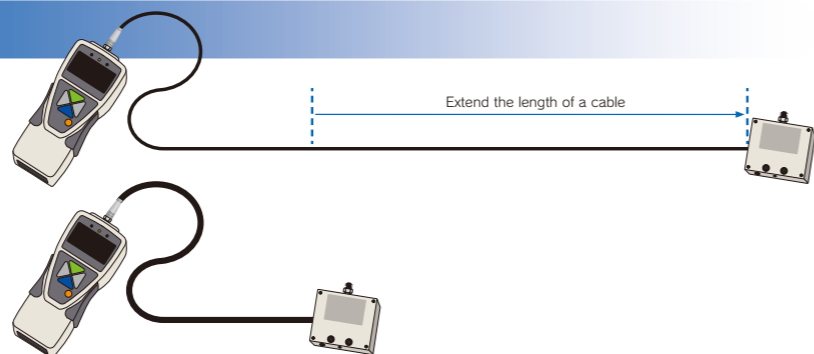
- Water projected in powerful jets (12.5 mm nozzle) against the enclosure from any direction shall have no harmful effects at least for 3 minutes 100 liter per minute.

The load cell itself comply with IP. Amplifier (indicator), connecting parts and connector parts do not comply with IP.

Custom Order Examples

[Example: Extend the length of a cable]

We can extend the length of a cable for gauge-PC connection or loadcell-amplifier connection.



[Example: Enhance flexibility of a cable]

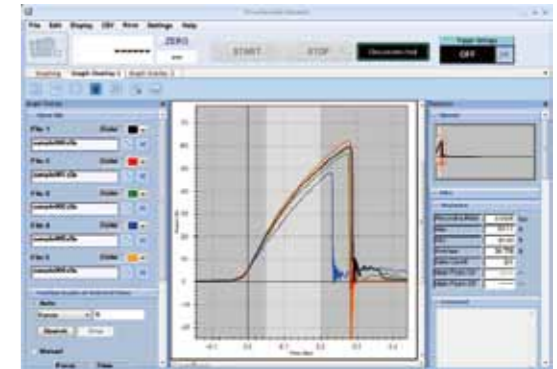
We can offer high-flex cable to reduce risks of disconnection. ※We cannot offer it in some cases Contact us for further information.

Data Collection and Analysis Software

With software, you can transfer load data from a force gauge to PC via USB or RS232C cable and see force transition graphically in real time. Software allows easy data management and analysis.

Advantage of Using The Software

With software, you can transfer data from a force gauge to a PC in real time via a cable. It shows test data graphically on a PC, and you can see force transition visually. Moreover, it automatically calculates the statistics and stores recorded data, enabling you to manage data with ease.



※All software is available in English or Japanese.

Software Lists

CD	Name of software	Purpose	Compatible model	Connecting port	Maximum data capturing rate
	Force Recorder Light	for drawing Force-Time Graph This software is moderate-priced edition.	ZTS To Page 09, ZTA To Page 11, eZT To Page 16, HTGS/HTGA See a torque catalog, DTXS/DTXA See a torque catalog.	USB	Max. 2000Hz
	Force Recorder Standard	for drawing Force-Time Graph	ZTS To Page 09, ZTA To Page 11, eZT To Page 16, HTGS/HTGA See a torque catalog, DTXS/DTXA See a torque catalog.	USB	Max. 2000Hz
	Force Recorder Professional	for drawing Force-Displacement Graph	ZTA To Page 11, eZT To Page 16, HTGA See a torque catalog, DTXA See a torque catalog.	USB	Max. 2000Hz
	Force Logger Plus	for acquiring data from up to 4 force gauges	ZTS To Page 09, ZTA To Page 11, eZT To Page 16, DST To Page 14, DSV To Page 15, HTGS/HTGA See a torque catalog, DTXS/DTXA See a torque catalog.	USB	Max. 10Hz
	ZLINK4	for drawing Force-Time Graph	DST To Page 14, DSV To Page 15	USB	Max. 50Hz



Force Recorder Light Force-Time Graphing Software

Moderated Price Model



Affordable model focusing on graph acquisition

Acquire measuring data accurately and precisely

- It graphs measurement accurately and precisely at high sampling rate, up to max. 2000Hz.

Create report instantly

- You can easily save data in Word, Excel and PDF format, reducing time to create reports.
- It automatically inputs graphs, dates & time, and statistics. You can also input comments manually.



•Please refer to the [Operating Environment] in Page 21 for details.



Force Recorder Standard Force-Time Graphing Software

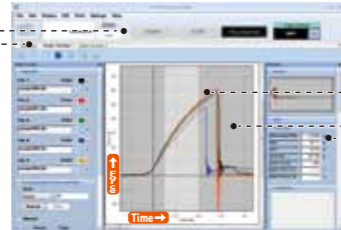
Compatible models



Analyze data easily and accurately, and create report with ease

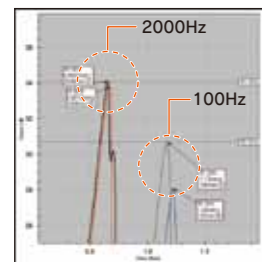
Make efficient by simple manipulations and useful functions.

- Easy steps for recording: Connect a force gauge and PC with a USB cable, and click START.
- You can compare data easily due to plural tabs.



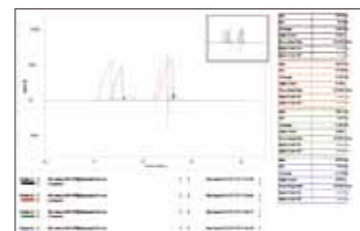
- It automatically calculates Max/Min/Ave values.
- You can insert comments.
- Maximum 5 graphs can be overlaid in a table, allowing easy comparison and accurate analysis.

Capture measuring data accurately.—



It graphs the measurement accurately due to high sampling rate, at Max.2000Hz
A peak value can be captured more precisely due to the higher sampling rate.
Comparison of 2000Hz and 100Hz
2000Hz is more to capture peak value than 100 Hz.

Create reports quickly



- You can easily save data in Word, Excel, and PDF format, reducing the time to create reports.
- It automatically inputs graphs, date & time, and statistics. You can also input comments manually if necessary.

Please refer to the right [Operating Environment1] for the details.



Force Recorder Professional Force-Displacement Graphing Software

Compatible models



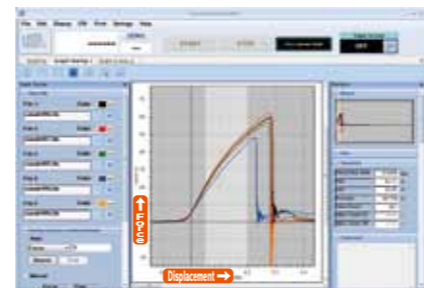
Draw and analyze force vs displacement graphs (FS curve)

In force-displacement measurement, a dedicated device measures force and travel amount (compression, tension) of the force gauge on the motorized stand as displacement at the same time.

You can draw force vs displacement graphs

- Force-displacement graph can be created by connecting the linear scale (Page 24) or test stand with inbuilt linear scale (FA model) (Page 33) together with force gauge.
- FSA series (Page 45) include this software.

Professional is basically the same as Standard in performance&function.



See the [Operating Environment1] for the detail.

Operating Environment for Force Recorder series [Operating Environment 1]

OS	Windows XP/Vista/7/8/8.1 (64bit version is available only in Windows 7/8/8.1)
Hardware	CPU: Pentium4 (1GHz more) more recommended Memory: 2GB more recommended Hard disk: 10GB(Data storage area) more
Platform	.NET Framework4 or later
Execute environment	Microsoft Internet Explorer6.0 later Windows Installer 3.1 later
Image size	Resolution 1024×768 pixel more
Connection port	USB1.1, USB2.0 connector

Operating Environment for Force Logger Plus, ZLINK4 [Operating Environment 2]

OS	Windows 7/8/8.1/10
Hardware	CPU: Pentium4 (1GHz more) more recommended Memory: 2GB more recommended Hard disk: 10GB(Data storage area) more
Platform	.NET Framework4 later
Execute environment	Microsoft Internet Explorer6.0 later Windows Installer 3.1 later
Image size	Force Logger Plus: Resolution 1280×768 pixel more ZLINK4: Resolution 1024×768 pixel more
Connection port	USB1.1, USB2.



Force Logger Plus Multiple Gauges Managing Software

Compatible models



Manage data up to 4 force gauges

Acquire data up to 4 force gauges, by connecting to the supplied USB hub

- Easy USB connection
- Acquire single data or synchronized data (up to 10 times/sec)

Simple data management

- You can record data by each serial number of the force gauge, together with the date & time of recording and person in charge.
- You can register the force gauge by each serial number and manage the force gauge with an operator's name and a department.

Force gauge setting

- You can easily set functions of the force gauge by the software.



Please refer to the left [Operating Environment 2] for details. of operating environments.



ZLINK4 Force-Time Graphing Software for DST/DSV

Compatible models



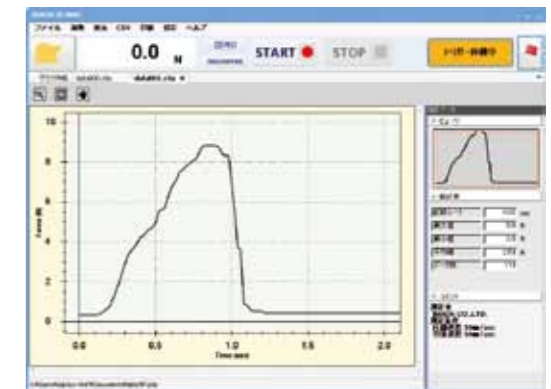
Draw force-time graph easily

Graphing at Max. 50Hz

- You can open multiple graphs with tabs
- Zoom specific parts in detail easily with zoom function

High operability by trigger function

- Automatic recording by setting the force value of when to start and end. You can also set the recording time.



Please refer to the left [Operating Environment 2] for details of operating environments.

Comparison Table Function Comparison

Software	Light	Standard	Professional	Plus	ZLINK4
Feature	Graphing only	With editing functions	Force-displacement graphing	Connect up to max. 4 force gauges	Simple Graphing
Graph	Force-time	Force-time	Force-time; Force-displacement	N/A	Force-time
Data transferring speed (Max)	2000 data/sec	2000 data/sec	2000 data/sec	10 data/sec	50 data/sec
Recording data point (Max)	7.2 million	7.2 million	7.2 million	65 thousand	7.2 million
Displacement output	N/A	N/A	N/A	N/A	N/A
Graph overlaying function	N/A	N/A	✓	N/A	N/A
Trigger function	N/A	✓	✓	N/A	✓
Point marking	N/A	✓	✓	N/A	N/A
Border line function	N/A	✓	✓	N/A	N/A
Capture function	N/A	✓	✓	N/A	N/A
Graph scaling	✓	✓	✓	N/A	✓
Statistics output	✓	✓	✓	✓	✓
Comment	✓	✓	✓	N/A	✓
Print	✓	✓	✓	✓	✓
CSV file converting	✓	✓	✓	✓	✓
Preview saving (PDF/Word/Excel)	✓	✓	✓	N/A	✓
Force gauge setting	✓	✓	✓	✓	✓
Test condition	N/A	N/A	N/A	✓	N/A
Managing force gauge	N/A	N/A	N/A	✓	N/A

Old models of force gauges may not be compatible partially or wholly. Contact us for the detail about old models.

Cables/Printer

Cables expand the functionality of digital force gauges and test stands. We also provide a printer.



ZTA To Page 11	ZTS To Page 09	eZT To Page 16	DSV To Page 15	DST To Page 14	FA Plus To Page 16
------------------------------	------------------------------	------------------------------	------------------------------	------------------------------	----------------------------------

The Cables to Connect a Force Gauge to an External Devices

RS232C cable Connects a PC to a force gauge, enabling to record the measurement and transmit command signals from the PC to the gauge.	CB-208 Length: Approx. 3m	CB-208 Length: Approx. 3m	CB-208 Length: Approx. 3m	CB-203 (9P)*1 Length: Approx. 3m	CB-203 (9P)*1 Length: Approx. 3m	Contact us.
Digimatic cable Connects Mitutoyo Digimatic Mini Processor (a portable printer) to a force gauge for printing the measurement.	CB-308 Length: Approx. 3m	CB-308 Length: Approx. 3m	CB-308 Length: Approx. 3m			Contact us.
Analog cable Connects analog devices such as a pen recorder to a force gauge, enabling to record force transition. ※CB-118 works for "AN" option.	CB-108 Length: Approx. 3m	CB-108 Length: Approx. 3m	CB-108 Length: Approx. 3m			Contact us.
Open End cable Connects a force gauge to a special device.	CB-908 Length: Approx. 3m	CB-908 Length: Approx. 3m	CB-908 Length: Approx. 3m			Contact us.
External Contact Point cable Enables to measure external contact points.	CB-808 Length: Approx. 3m	CB-808 Length: Approx. 3m	CB-808 Length: Approx. 3m			Contact us.

The Cables to Connect a Force Gauge/an Amplifier to a Test Stand

Force Control cable ※2 Connects a test stand (MX/MH) to a force gauge/an amplifier, activating motion control by set force values and an overload-preventing function.	CB-508 Length: Approx. 1.5m	CB-508 Length: Approx. 1.5m	CB-508 Length: Approx. 1.5m			
Force Control cable ※2 Connects a test stand (MX2/MH2/EMX) to a force gauge/an amplifier, activating motion control by set force values and an overload-preventing function.	CB-518 Length: Approx. 1.5m	CB-518 Length: Approx. 1.5m	CB-518 Length: Approx. 1.5m			
Displacement cable (MX2-FA/MH2-FA connecting) ※3 Allows displacement output by connecting a force gauge/an amplifier to a test stand equipping a linear scale (MX2-FA/MH2-FA).	CB-718 Length: Approx. 1.5m		CB-718 Length: Approx. 1.5m			
Displacement cable (EMX-FA connecting) ※3 Allows displacement output by connecting a test stand equipping a linear scale (EMX-FA) to a force gauge/an amplifier.	CB-728 Length: Approx. 1.5m		CB-728 Length: Approx. 1.5m			

The Cable to Connect a Test Stand to an External Device

External Signals I/O Cable Connects a test stand (MX2-CN/MH2-CN/EMX), activating the external control.	CB-706 Length: Approx. 1.5m
--	---

※1 CB-201(25P male) and CN-202(25P female) are also available.
 ※2 Please refer to "ZT series Advanced Measurement Examples" on Page 13
 (A test stand stops when a force gauge senses force beyond its capacity (overload-preventing function) however, it cannot prevent overload completely. We do not guarantee the complete overload-prevention.)
 ※3 It also activates motion control by set force values and an overload-preventing function.
 ※4 We offer customization including the length extension, connector's change in shape, and more.

Printer DP-1VR

(Mitutoyo Digimatic Mini Processor)



It enables to print Maximum/Minimum/Average standard deviation values. To print, a digimatic cable is required.

Compatible models
ZTA/ZTS/eZT/HTGS/HTGA/DTXS/DTXA

The Cables for Past Models

If you need a cable for past-model force gauges/torque gauges, please refer to the right list. If your model is not mentioned in the list, please contact us.

	ZP,Z2 series	HTG2,DTX2 series	DS2 series
Analog cable	CB-104	CB-104	CB-101
RS-232C cable	CB-204	CB-204	CB-203
Digimatic cable	CB-304	CB-304	CB-301
Force Control cable	CB-501 (Connect with MX series)		

Examples of Cable Applications

with Digital Force Gauge ZT series

- It enables you to
 - detect abnormalities using a buzzer / light / your equipment together. (Using the functions of comparator and overload output)
 - record the force value of contact point in a switch tactile test or broken point in a cable strength test. (Using the function of the external contact point output)
 - show the point at the moment contact point of switch feeling test or a broken point of cable strength test on a graph using software (Force Recorder Standard/Professional). (Using the mark point function)
 - control an external device when the force gauge senses a set point. (Using sub-comparator function; Available only in ZTA/eZT series)



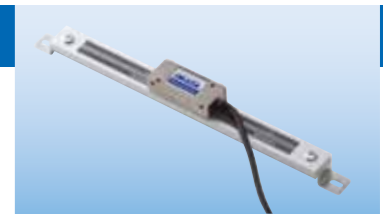
with Motorized Test Stand MX2(MH2) series (Option-CN version)

- It enables you to
 - Operate externally from a foot switch and the like.
 - Improve equipment safety with an interlock mechanism.
 - Link wire conduction and test stand activities.

Built-in Linear Scale Unit

You can connect this linear scale to ZTA(P11) series/eZT(P16) series to measure force and displacement. You can mount it on your equipment easily.

Model	DMK-100	DMK-300	DMK-500	DMK-800
Stroke(mm)	Max.100	Max.300	Max.500	Max.800
Size(mm)	254X21	454X21	654X21	954X21
Fixing screw	M4	M4	M4	M4



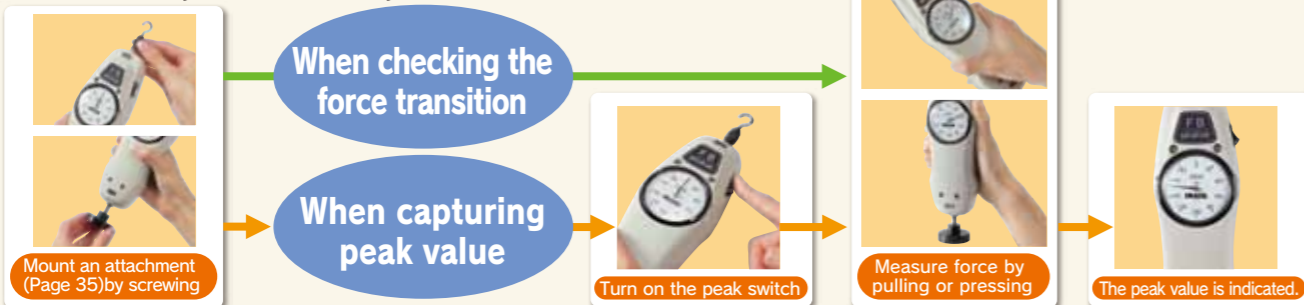
Mechanical Force Gauges

Analog type force gauges. It is easy to read force transition.
Electricity is not needed. They are stout and long-lasting.

How to Use Mechanical Force Gauges (Using Example Model: FB series)

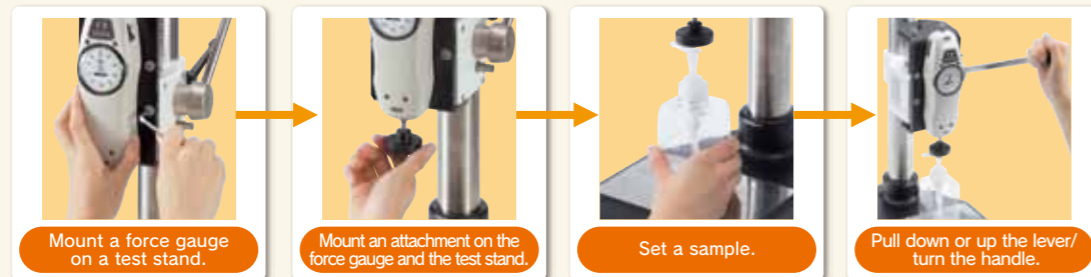
Simple Method

You can readily measure force by hand.



Reproducible Method

You can combine a test stand(P28) with a force gauge to improve repeatability.



The Features of Mechanical Force Gauges

Strong Points

- Stable force can be applied due to the 10mm stroke thread.
- Their mechanical structures reduce malfunctions or glitches caused by external circumstances such as noise or static electricity.

Weak Point

- It is not suitable for shock tests such as breaking tests.

Economical Type FB series

The Most Simple Model

Compression and Tension Compatible

Size: Approx. W67×D48×H232.5mm
Weight: Approx. 630g

Improve Measuring Repeatability
Test Stands ————— To Page 28

Apply Stable Force by Hand
Handle FOH-1 ————— To Page 43



FB/FS Standard set

Specifications

Accuracy	±0.3%F.S. or less
Division	100lines(※1)
Reading method	Real time/Peak hold(Switchable)
Standard accessories	Attachment 6pcs(※3)-the instruction manual-the carry case-Inspection certificate etc.

Model lists

Model	Capacity	Resolution	Thread
FB-10N	10N	0.1N	
FB-20N	20N	0.2N	
FB-30N	30N	0.25N	
FB-50N	50N	0.5N	
FB-100N	100N	1N	M6
FB-200N	200N	2N	
FB-300N	300N	2.5N	
FB-500N	500N	5N	

International model lists(※2)

Model	Capacity	Resolution	Thread
FS-1K	1kgf	10gf	
FS-2K	2kgf	20gf	
FS-3K	3kgf	25gf	
FB-5K	5kgf	50gf	
FB-10K	10kgf	100gf	M6
FB-20K	20kgf	200gf	
FB-30K	30kgf	250gf	
FB-50K	50kgf	500gf	
FB-5lb	5lbf	0.05lbf	
FB-10lb	10lbf	0.1lbf	
FB-20lb	20lbf	0.2lbf	
FB-30lb	30lbf	0.25lbf	M6
FB-50lb	50lbf	0.5lbf	
FB-100lb	100lbf	1lbf	

Standard Type PS series

High Accuracy Model

Compression and Tension Compatible

Size: Approx. W67×D48×H232.5mm
Weight: Approx. 630g

Improve Measuring Repeatability
Test Stands ————— To Page 28

Apply Stable Force by Hand
Handle FOH-1 ————— To Page 43

Specifications

Accuracy	±0.1%F.S. or less
Division	100lines(※1)
Reading method	Real time/Peak hold(Switchable)
Standard accessories	Attachment 8pcs(※3)-the instruction manual-the carry case-Inspection certificate etc.

Model lists

Model	Capacity	Resolution	Thread
PS-5N	5N	0.05N	
PS-10N	10N	0.1N	
PS-20N	20N	0.2N	
PS-30N	30N	0.25N	
PS-50N	50N	0.5N	
PS-100N	100N	1N	M6
PS-200N	200N	2N	
PS-300N	300N	2.5N	
PS-500N	500N	5N	

International model lists(※2)

Model	Capacity	Resolution	Thread
PS-0.5K	500gf	5gf	
PS-1K	1kgf	10gf	
PS-2K	2kgf	20gf	
PS-3K	3kgf	25gf	
PS-5K	5kgf	50gf	M6
PS-10K	10kgf	100gf	
PS-20K	20kgf	200gf	
PS-30K	30kgf	250gf	
PS-50K	50kgf	500gf	
PS-5lb	5lbf	0.05lbf	
PS-10lb	10lbf	0.1lbf	
PS-20lb	20lbf	0.2lbf	
PS-30lb	30lbf	0.25lbf	M6
PS-50lb	50lbf	0.5lbf	
PS-100lb	100lbf	1lbf	

High Capacity Type PSH series

High Capacity Model in capacity from 500N to 3000N

Compression and Tension Compatible

Size: Approx. 95×D63.4×290mm
Weight: Approx. 3.1kg

Improve Measuring Repeatability
Test Stands ————— To Page 28

Specifications

Accuracy	±0.1%F.S. or less
Division	100lines(※1)
Reading method	Real time/Peak hold(Switchable)
Standard accessories	Attachment 6 pcs(※3)-the instruction manual-the carry case-Inspection certificate etc.

Model lists

Model	Capacity	Resolution	Thread
PSH-500N	500N	5N	
PSH-1000N	1000N	10N	
PSH-2000N	2000N	20N	M10
PSH-3000N	3000N	25N	

International model lists(※2)

Model	Capacity	Resolution	Thread
PSH-50K	50kgf	0.5kgf	
PSH-100K	100kgf	1kgf	M10
PSH-200K	200kgf	2kgf	
PSH-300K	300kgf	2.5kgf	
PSH-200lb	200lbf	2lbf	
PSH-300lb	300lbf	2.5lbf	M10
PSH-500lb	500lbf	5lbf	

Notes: ①The weight is depending on the range. (※1)120 lines for 30N, 300N, 30k and 30lb.(150lines for PSM)
(※2) The international models are NOT able to sell in Japan due to the Measurement Act.(※3)Please refer to Page 35 for the accessory attachments.

Mechanical Force Gauge

Precision Type PSM series

The Highest Accuracy Model with The Small Divisions

Compression and Tension Compatible

Size: Approx. W67×D48×H232.5mm
Weight: Approx. 630g

Improve Measuring Repeatability
Test Stands ————— To Page 28

Apply Stable Force by Hand
Handle FOH-1 ————— To Page 43

Specifications

Accuracy	±0.1%F.S. or less
Division	200lines(※1)
Reading method	Real time/Peak hold(Switchable)
Standard accessories	Attachment 8pcs(※3)-the instruction manual-the carry case-Inspection certificate etc.

Model lists

Model	Capacity	Resolution	Thread
PSM-20N	20N	0.1N	
PSM-30N	30N	0.2N	
PSM-50N	50N	0.25N	
PSM-100N	100N	0.5N	M6
PSM-200N	200N	1N	
PSM-300N	300N	2N	
PSM-500N	500N	2.5N	

International model lists(※2)

Model	Capacity	Resolution	Thread
PSM-2K	2kgf	10gf	
PSM-3K	3kgf	20gf	
PSM-5K	5kgf	25gf	
PSM-10K	10kgf	50gf	M6
PSM-20K	20kgf	100gf	
PSM-30K	30kgf	200gf	
PSM-50K	50kgf	250gf	

Built-in Type UKT/UKK series

Small Model Ideal for Built-in Equipment

Size: Approx. W60×D40×156mm
Weight: Approx. 300g

- Exclusive use for tension: UKT series
- Exclusive use for compression: UKK series

Specifications

Accuracy	±0.3%F.S. or less
Division	100lines(※1)
Reading method	Real time/Peak hold(memory pointer type)
Standard accessories	Attachment(UKK:5pcs/UKT:4pcs)-the instruction manual-the carry case-Inspection certificate etc.

Model lists

Model	Capacity	Resolution	Thread
UKT-20N	UKK-20N	20N	0.2N
UKT-30N	UKK-30N	30N	0.25N
UKT-50N	UKK-50N	50N	0.5N
UKT-100N	UKK-100N	100N	1N
UKT-200N	UKK-200N	200N	2N
UKT-300N	UKK-300N	300N	2.5N

International model lists(※2)

Model	Capacity	Resolution	Thread
UKT-2K	UKK-2K	2kgf	20gf
UKT-3K	UKK-3K	3kgf	25gf
UKT-5K	UKK-5K	5kgf	50gf
UKT-10K	UKK-10K	10kgf	100gf
UKT-20K	UKK-20K	20kgf	200gf
UKT-30K	UKK-30K	30kgf	250gf
UKT-5lb	UKK-5lb	5lbf	0.05lbf
UKT-10lb	UKK-10lb	10lbf	0.1lbf
UKT-20lb	UKK-20lb	20lbf	0.2lbf
UKT-30lb	UKK-30lb	30lbf	0.25lbf
UKT-50lb	UKK-50lb	50lbf	0.5lbf

What is Unit "N"?

The "N" is a force unit called "Newton." <1kgf=9.80665N>
 In Japan, Measurement Act established in 1993 requires you to use only Newton for force measurement.
 Thus, in Japan our gauges indicate N.
 For outside of Japan, we offer international models providing N/kgf/lbf. To be specific, as for digital force gauges you can switch units (N/kgf/lbf), and as for mechanical force gauges you have to select one from the 3 units before purchase.

For your information, in Japan you can use the unit only in the table below according to Measurement Act.

Excerpt of "Measurement Units pertaining to the International System of Units" (Ministry of Economy, Trade and Industry)

Quantity of the state of physical phenomena	Measurement unit
Force	Newton
Moment of force	Newton-meter
Pressure	Pascal or Newton per square meter bar
Stress	Pascal or Newton per square meter
Viscosity	Pascal second or Newton second per square meter

Reduced value for conventional force unit 1kgf=9.80665N

What is the best way to choose the most suitable range of a force gauge / a load cell?

⚠ Capacity in specifications means the maximum force that can be applied to a force gauge / a load cell. Force gauges or load cells would be broken if you applied force over their capacity. Therefore, we recommend that you choose the force gauge whose capacity is a little larger than expected force in your testing. Please utilize the information below to prolong gauges' lives.

Shock or Breaking Test : When Measuring Rapid Force Change

→Please choose the force gauge whose capacity is 200% of expected force in your testing.
Ex) Expected force: 10N, Measuring instrument: Digital force gauge ZTS →ZTS-20N is recommended.
 (①Double the expected force(10N) → 20N, ②Choose the ZTS whose capacity is 20N → ZTS-20N)

Elongation Test : When Measuring Slow Force Change

→Please choose the force gauge whose capacity is 150% of expected force in your testing.
Ex) Expected force: 30N, Measuring instrument: Digital force gauge ZTS series →ZTS-50N is recommended.
 (①Increase expected force(30N) by half → 45N, ②Choose the ZTS whose capacity is 45N
 → We do not offer ZTS-45N, then ZTS-50N is the nearest one.)

What Is "F.S." for Accuracy, for example +/-0.2%F.S.?

"F.S." is abbreviation of "Full Scale," and it means the capacity.
Ex) ZTS-50N offers +/-0.2%F.S. accuracy, and has 50N capacity.
 →The error is... 50N X +/-0.2% = +/-0.1N.
 →When the measured value is 30N using ZTS-50N,
 guaranteed result is... 30N +/-0.1N = 29.9 to 30.1N.

Key Point of Maintenance of Measuring Instrument

Measuring instruments should be calibrated periodically. Calibrating means checking if they maintain initial accuracy or not. All of the measuring instruments including force gauges reduce their accuracy slightly day by day, therefore, they should be calibrated, and adjusted as required to conduct precise measurement continuously.

IMADA offers calibration services, so you can keep using our force gauges for long after purchase at ease. Besides, our calibration center is certified with ISO/IEC 17025:2005, therefore, we offer high quality of calibration service if required.
 ※Some products cannot be calibrated for some reasons.

Test Stands

Test Stands Improve Repeatability.

They provide constant test speed and apply load straight, reducing the variation from a person to a person.

A force gauge can be used by hand, however, you can use a test stand for greater accuracy. You can combine a test stand with a force gauge and attachments to create a force testing machine, which offers a significant advantage over handheld use in precision.

Motorized Test Stands

They provide constant test speed and apply force straight, offering high repeatability.

Simple MX(Vertical)/MH(Horizontal)



To Page 30

Capacity:
 <MX> 500N~5000N
 <MH> 1000N~3000N

The Simplest Type

- For simple compression/tension tests

Measuring speed can be changed with its dial, however, the setting speed is not able to be seen in digital. MX2/MH2 or EMX can display the speed on its monitor.

Standard MX2(Vertical)/MH2(Horizontal)



To Page 29

Capacity:
 <MX2> 500N~2500N
 <MH2> 500N

User Friendly and High Functionality

- You can digitally set testing speed and see it on its monitor.
- The equipped monitor indicates measuring conditions, and you can set them easily.
- MX2/MH2 include Timer and Counter function, so that you can conduct durability tests and repeat tests.

High Performance EMX



To Page 30

Capacity: 1000N

Advanced type of MX2 with several features below

- It provides a wide range of testing speed (0.5-600mm/min) and travel distance setting, covering a wide variety of testing conditions.
- It has highest rigidity, offering great precision.
- 5 types of measuring pattern (speed/repeat frequency etc.) can be stored.

Manual Test Stands

With a manual test stand, you can apply force straight, offering higher repeatability than measurement by hand.

Simple



To Page 31

Capacity: 1000N

- The simplest test stand
- The lever improves measuring efficiency.



To Page 31

Capacity: 1000N

- The simplest test stand
- The handle realizes stable measurement.

Low Capacity



To Page 32

Capacity: 50N

- You can fix a stroke. A lever makes efficient.



To Page 32

Capacity: 50N

- Ideal for small force measurement.



To Page 32

Capacity: 50N

- Varieties of measurements can be realized by the different installing ways.

Long Stroke



To Page 31

Capacity: 500N~3000N

- Ideal for stretching or large sample measurement.

Horizontal



To Page 32

Capacity: 1000N~3000N

- You can set sample very easily.

※Actual measuring capacities are depending on the force gauge capacities.

However, measurements are depending on test stand capacities when the test stand capacity is less than the force gauge capacity.

On our website, you can see a wide range of force testing applications, and download a specification sheet of each product. Please feel free to contact us.

IMADA

●IMADA service group telephone number: +81(0)532-33-3288 <http://www.forcegauge.net/en/>

Motorized Test Stands

They provide constant test speed and apply force straight. They realize the high-repeatable measurement.

Combining a test stand with a force gauge and attachments, you can create a testing machine to meet your testing needs.



Compression Test



Tension Test



Peeling Test

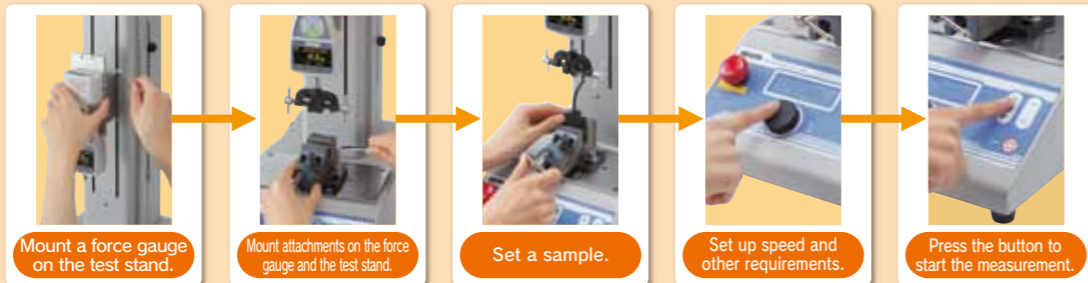


Friction Test



How to Use Motorized Test Stand

(Using Example: MX2 series)



As options, we can extend stroke, change speed range, and more to meet your measurement needs. Some models can equip a liner scale (FA version) to measure / analyze the relationships of force and displacement. The details are on Page 33.

Standard Type

- Measuring speed can be set digitally.
- This type of stands have a monitor to show measuring conditions, so that you can set them easily.
- You can conduct a durability test using its timer function, and repeat test using its counter functions.



MX2 series

Connect with External Devices
Application examples of how cables are used
To Page 13 and Page 24

Analyze Force-Displacement Relation
Force-Displacement Analysis Unit
To Page 45

- Option**
- Length Scale
 - FA version
 - Long Stroke
 - Speed Range Change
 - Output and Input External Signal

Please refer to Page33



MH2-500N

Horizontal Type

Connect with External Devices
Application examples for using cables
To Page 13 and Page 24

Analyze Force-Displacement Relation
Force-Displacement Analysis Unit
To Page 45

- Option**
- Length Scale
 - FA version
 - Speed Change
 - Output and Input External Signal

Please refer to Page33



Specification

Lists	MH2-500N
Capacity	500N
Speed	10-300mm/min
Maximum Sample Height (※1)	Approx.245mm
Weight	Approx. 1.4kg
Size	Approx.W554xD220xH219mm

Specification

Lists	MX2-500N	MX2-1000N	MX2-2500N
Capacity	500N	1000N	2500N
Speed	10-300mm/min	10-300mm/min	10-300mm/min
Maximum Sample Height (※1)	Approx.235mm	Approx.300mm	Approx.320mm
Weight	Approx. 1.8kg	Approx. 1.9kg	Approx. 2.6kg
Size	Approx.W220xD380xH562mm	Approx.W280xD410xH660mm	Approx.W280xD410xH644mm

Advanced Type EMX-1000N

- The wide range of speed (0.5-600mm/min) and travel setting function fulfill various measuring requirements.
- It has the highest rigidity, offering greater accuracy.
- You can set travel digitally, equalizing measuring conditions.
- It stores maximum 5 measuring patterns in itself, improving measuring efficiency.
- It equips I/O connector to allow for communications with external devices, so that you can build it into your equipment to improve measurement efficiency.



Setting display

Specification

Lists	EMX-1000N
Capacity	1000N
Speed	0.5-600mm/min
Maximum Sample Height (※1)	Approx.320mm
Weight	Approx.23.5kg
Size	Approx.W280xD410xH643mm

Simple Type

- This type is the simplest.

MX series

Option

- Speed/ Length Meter
 - Length Scale
 - Long Stroke (except MX-5000N)
 - Speed Change
- Please refer to Page33



Specification

Lists	MX-500N	MX-1000N	MX-5000N
Capacity	500N	1000N	5000N
Speed	10-300mm/min	8-240mm/min	10-300mm/min
Maximum Sample Height (※1)	Approx.235mm	Approx.420mm	Approx.340mm
Weight	Approx. 1.3kg	Approx. 2.4kg	Approx. 3.0kg
Size	Approx.W214xD428xH573mm	Approx.W263xD368xH903mm	Approx.W250xD420xH816mm

Note: ○A force gauge is separately sold. ○Actual measuring capacity depends on the force gauge's capacity. However, when the test stand's capacity is less than the force gauge's capacity, you can measure force up to the test stand's capacity. (※1) The maximum height or length means the distance between the test stand table and the thread of the force gauge ZT series general type (1000N or less) at the highest position of the test stand. The distance does not include attachments. The distance of MX-5000N or MX2-2500 is in case of mounting ZT series high capacity type.

Motorized Test Stand

Connect with External Devices
Application Example for using cables
To Page 13 and Page 24

Analyze Force-Displacement Relation
Force-Displacement Analysis Unit
To Page 45

- Option**
- FA version
 - Long Stroke
- Please refer to Page33



EMX-1000N



MH-1000N·MH-300

Horizontal Type



Specification

Lists	MH-1000N	MH-300
Capacity	1000N	300N
Speed	6-180mm/min	8-240mm/min
Maximum Sample Length (※1)	Approx.280mm	Approx.295mm
Weight	Approx. 1.4kg	Approx. 2.9kg
Size	Approx.W700xD195xH210mm	Approx.W700xD252xH227mm

Manual Test Stands

They provide constant test angles, offering higher repeatability than measurement by hand.



Combining a test stand with a force gauge and attachments, you can create a testing machine to meet your testing needs.

Cloth Button Pull Off Test

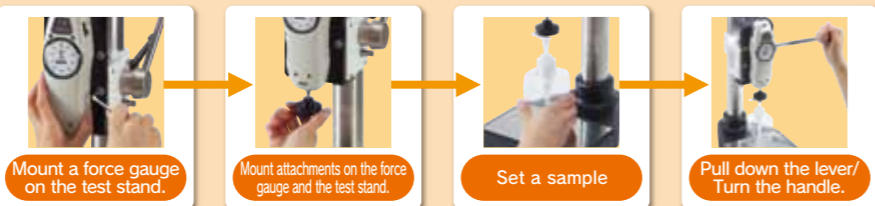


Ball Hardness Test



How to Use Manual Test Stand

(Using Example: SVL-1000N)



As options, we can extend its stroke or mount a length scale. The detail is on Page 33.

Simple Type SVL-1000N/SVH-1000N

◎The lever type improves the measuring efficiency. The handle type realizes stable measurement.

Specification

Lists	SVL-1000N(Lever type)	SVH-1000N(Handle type)
Capacity	1000N	1000N
Maximum Sample Height(※1)	Approx.225mm	Approx.225mm
Maximum Stroke※A	60mm	60mm
Feed Amount	60 mm / 170 degree turn of the lever	3mm/1 turn
Weight	Approx. 7.3kg	Approx. 7.7kg
Size	Approx.W200xD280xH410mm	Approx.W200xD280xH410mm

※A Maximum stroke means maximum traveling distance of a force gauge.
 ※B GF-1/2: These are necessary adapters for mounting a chuck fixture on the tables of the stand. (Separately sold)



Long Stroke Type HV series

◎HV series have a long stroke, ideal for testing extensible or large specimens.

◎They are operated by a handle.

Specification

Lists	HV-500NII	HV-1000N	HV-3000N
Capacity	500N	1000N	3000N
Maximum Sample Height(※1)	Approx.240mm	Approx.375mm	Approx.415mm
Feed Amount	2mm/1 turn	1.2mm/1 turn	0.6mm/1 turn
Weight	Approx.1.0kg	Approx.1.8kg	Approx.2.4kg
Size	Approx.W327xD309xH597.5mm	Approx.W305xD275xH730mm	Approx.W355xD310xH744mm



Note: ◎A force gauge is separately sold. ◎Actual measuring capacity depends on the force gauge's capacity. However, when the test stand's capacity is less than the force gauge's capacity, you can measure force up to the test stand's capacity. (※1)The maximum height or length means the distance between the test stand table and the thread of the force gauge ZT series general type(1000N or less)at the highest position of the test stand. The distance does not include attachments. The distance of HV-3000N or SH-3000N is in case of mounting ZT series high capacity type.

Manual Test Stand

Low Capacity or Small Type

◎This type is ideal for measurement in capacity up to 50N. ◎You can move a force gauge at light feed.

FCA-50N

◎You can decide a travel distance to move a force gauge, and measure the force value to the distance.

Specifications

Model	FCA-50N
Capacity	50N
Distance	0~45mm (Adjustable with the limit knob)
Measuring Space	50~80mm (*1)
Weight	Approx. 3kg
Size	Approx.W75xH296xD178mm
Compatible force gauge	ZTS ZTA DST DSV (*2)

※1 The measuring space means the distance between the test stand table and the thread of a force gauge. The distance depends on where you put the force gauge.
 ※2 You cannot combine high capacity model force gauges with this stand.
 ※We also offer an food testing unit including this FCA-50N. For further information, please see "Catalog for Torque testers and Food testers."



KV-50N

◎It is a desktop type.
 ◎It can move a force gauge at light feed (1.0mm/1 turn).

Specification

Lists	KV-50N
Capacity	50N
Maximum Sample Height(※1)	Approx.63mm
Feed Amount	1.0mm/1 turn
Weight	Approx.2kg
Size	Approx.W140xD180xH220mm

Option
 ●Length Scale
 Please refer to Page 33



MS series

◎Various measurements are possible by the different installing ways.



You can combine this stand with an optional handle or your tripod to expand the range of measuring opportunity.
 ※You need an optional adaptor (sold separately) to combine it with a tripod.
 ※We do not sell any tripods.

Specification

Lists	MSF-50N	MSL-50N
Type	Standard	FA version(Page33)
Capacity	50N	
Maximum Sample Height(※1)	Approx.44mm	
Feed Amount	1.8mm/1 turn	
Weight	Approx.1.2kg	
Size	Approx.W110xD81xH204mm	



Horizontal Type SH series

◎Horizontal type: You can set sample easily.

Specification

Lists	SH-1000N	SH-3000N
Capacity	1000N	3000N
Maximum Sample Length(※1)	Approx.250mm	Approx.355mm
Feed Amount	1.2mm/1 turn	0.6mm/1 turn
Weight	Approx.15kg	Approx.22kg
Size	Approx.W560.5xD265xH219.5mm	Approx.W696.5xD285xH225mm



Table of contents

Force Gauges and Related Items

Test Stands





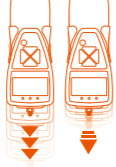

Attachments and Fixtures

Force Measurement Units/Simple Testers



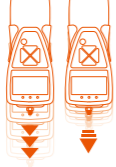

Options for Test Stands

You can add the options below to expand functionality of test stands or improve measuring efficiency.

Options for The Manual and Motorized Test Stands

Length Scale (-S) It digitally indicates travel distance of a force gauge. (We recommend another option [FA version] below if you need to analyze the relations of force and displacement.)		Long Stroke (-L) We extend the stroke of stand's column. (Maximum stroke differs among models. Besides, some models could decrease their force capacity. Please contact us for further information.)	
Speed / Length Meter (-E) It displays the measuring speed and travel distance of force gauges.		FA version (-FA) We build a linear scale into a test stand to output travel distance of a force gauge, and you can utilize it for analysis of force-displacement relations. For further information of force-displacement analysis unit, please see page 45.	
Speed Range Change (-V○○) We can change the range of measuring speed. (The customizable range differs among models. Besides, some models could decrease their force capacity. Please contact us for further information.)		Output and Input External Signals (-CN) We can equip a connector for external input and output. For example, you can connect a footswitch with the stand via the connector to operate it by the footswitch (like step on it to start measurement). Please contact us for further information.	

Limited Options for The Motorized Test Stands

Speed / Length Meter (-E) It displays the measuring speed and travel distance of force gauges.		FA version (-FA) We build a linear scale into a test stand to output travel distance of a force gauge, and you can utilize it for analysis of force-displacement relations. For further information of force-displacement analysis unit, please see page 45.	
Speed Range Change (-V○○) We can change the range of measuring speed. (The customizable range differs among models. Besides, some models could decrease their force capacity. Please contact us for further information.)		Output and Input External Signals (-CN) We can equip a connector for external input and output. For example, you can connect a footswitch with the stand via the connector to operate it by the footswitch (like step on it to start measurement). Please contact us for further information.	

Options Available for Motorized Test Stands

	Model	MX-500N	MX-1000N	MX-5000N	MH-1000N	MH-300	MX2-500N	MX2-1000N	MX2-2500N	MH2-500N	EMX-1000N
Speed/ Length Meter	-E	○	○	○	○	○	/	/	/	/	/
Length Scale	-S	○	○	○	○	○	○	○	○	○	○
FA Specification	-FA	/	/	/	/	/	○	○	○	○	○
Long Stroke (mm)	-L	+200	+250	/	/	/	+200	+300	+300	/	+300
Output and Input External Signals	-CN	/	/	/	/	/	○	○	○	○	※1
Speed Range Change (mm/min) ※2	-V●●	40~1200 20~600 2~60	40~1200 27~600 20~600 15~400 4~120	5~150	30~900 20~600 15~450 10~300 3~90	/	30~900 27~600 25~750 2~150 3~90 1.5~45	35~1000 25~750 2~150 2.5~75	1.5~45 5~150	30~900 20~600 15~450 3~90 1.5~45	/

- ◆ **Examples of Model with Options**
- When you want to extend the stroke of MX2-500N → Choose the option "Long Stroke (-L)" = **MX2-500N-L**
 - When you want to change the speed range of MX2-500N → Choose the option "Speed Range Change (-V●●)" = **MX2-500N-V600**
- ※1 In ●●, we put figure of speed. → Example) When the speed range changes into the fastest speed
 20~ **600** mm/min The number is here.

Options Available for Manual Test Stands

	Model	SVL-1000N	SVH-1000N	HV-500NII	HV-1000N	HV-3000N	KV-50N	MSF-50N	SH-1000N	SH-3000N
Length Scale	-S	○	○	○	○	○	○	/	○	○
Long Stroke (mm)	-L	+200 ※1	+200 ※1	+200	+150	/	/	/	/	/

- ◆ **Examples of Model with Options.**
- When you want to see the travel distance of a force gauge using SVH-1000N → Choose the option "Length Scale (-S)" = **SVH-1000N-S**

The Helpful Functions of Motorized Test Stand

The optional functions can be activated by connecting a force gauge ZTS/ZTA series to a motorized test stand via the suitable cable.

① The Overload Preventing Function

② Force Control Functions

For further information, see page 13

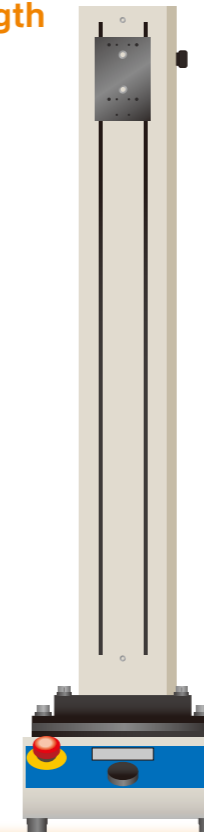
Examples of Customized Test Stands

We provide made-to-order test stands to fit your needs.

Changing Test Speed Range / Extending Column Length

[This is recommended when you...]

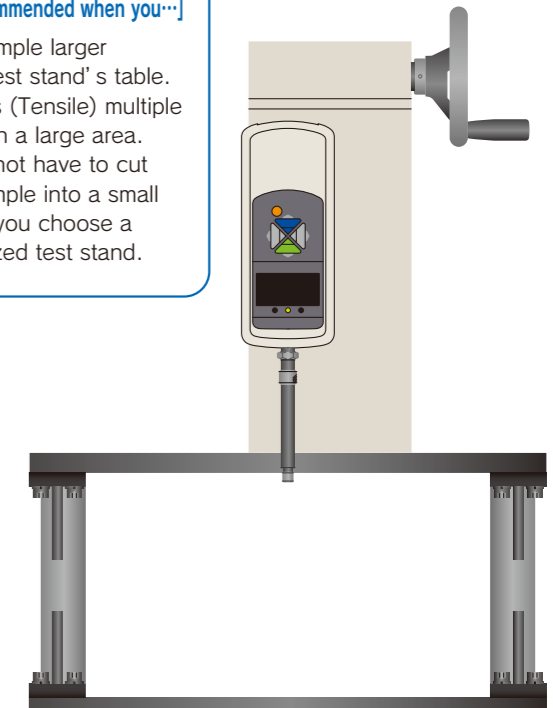
- Test stretch samples.
- Compress (Tensile) long.
↑ We can extend column length of both horizontal and vertical test stands.
- Test speedily.
- Test slowly.
↑ We can change the range of measuring speed.



Testing Large Samples

[This is recommended when you...]

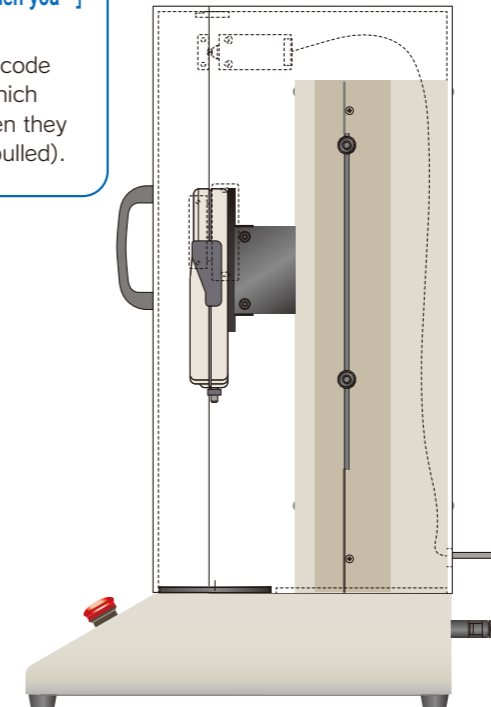
- Test a sample larger than a test stand's table.
- Compress (Tensile) multiple points on a large area.
→ You do not have to cut your sample into a small piece if you choose a customized test stand.



Carrying Interlock Equipment to Improve Safety

[This is recommended when you...]

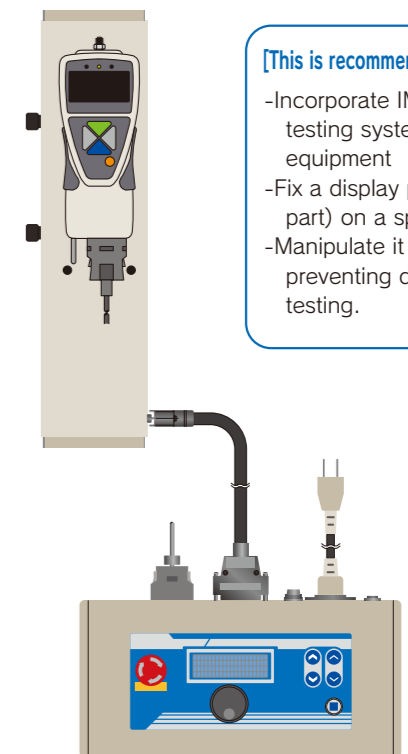
- Comply with your company's safety code
- Test the samples which could fly apart when they are compressed (pulled).



Separating a Display Part from a Drive Part for Built-in

[This is recommended when you...]

- Incorporate IMADA force testing system into your equipment
- Fix a display part (a drive part) on a specific place
- Manipulate it apart, preventing dangers in testing.



Please feel free to contact us about made-to-order issues. We will provide the best solution for you.

Attachments

The fixtures mounting on a force gauge thread or a test stand table.

Attachments are integral components of testing systems, designed for a wide variety of force testing applications for tension, compression, peeling, COF, and more.



The Attachment Types and How to Use

IMADA attachments are separated to 2 types generally.

1 Attachments to be mounted on a force gauge.

A force gauge's thread is **M6** or **M10** screw, and type **1** attachments are designed to fit into the thread. You can choose one from a wide range of attachments, and mount it on a force gauge's thread to complete a force tester.

2 Attachments to be mounted on a test stand table.

Type **1** can be mounted on a test stand with a grip mounting adapter.※

※It is attached with test stands (except some models).

- ⚠ Weight of an attachment is applied as force to a force gauge, therefore, please choose an attachment whose weight is 10% or less of the force gauge's capacity.
- ⚠ Please contact us before purchase to choose the most appropriate attachment for your testing. Some samples cannot be tested appropriately due to their shapes or materials. We are pleased to help you choose the best attachment to meet your testing needs.
- ⚠ Some attachments are in accordance with Japanese Industrial Standard(JIS). A force gauge and a test stand are required for measurements complying with JIS. Please feel free to contact us for the details. When you need other standard such as ISO or ASTM, please contact us as well.

Accessory Attachments

The IMADA force gauges come with attachments below for basic compression/tension tests.

Standard Type **M6**

(Accessory attachments for the force gauges whose capacities are 1000N or less)

Force gauges whose capacities are 100N or less come with aluminum made attachments (A-type). Steel made attachments (S-type) are included in force gauges whose capacities are from 200N to 1000N.



The number of attachments varies by models.
ZTS/ZTA Basic model:①~⑧, ZTS/ZTA-DPU-2~500N:①~⑧,
DST/DSV:①~⑥, PS/PSM:①~⑧, FB:①~⑥
For 1000N capacity, SR-1 is included instead of S-1.

High Capacity Type **M10**

(Accessory attachments for the force gauges whose capacities are higher than or equal to 1000N)



The number of attachments varies by models.
ZTS/ZTA-2500N/5000N:①~⑧,
ZTS/ZTA-DPU-1000~5000N:①~⑧, PSH:①~⑧

On our website, you can see a wide range of force testing applications, and download a specification sheet of each product. Please feel free to contact us.
IMADA
IMADA service group telephone number: +81(0)532-33-3288 <http://www.forcegauge.net/en/>

Attachments for Compression Testing

We offer fixtures for a variety of compression testing such as a durability test, a bending test, a sticking test, and more.

Compression Test Fixture for Small Spots PG-2/3/4/5

Ideal for compression and penetration tests of small samples.

PG-2

○Representative applications
Plastic injection components, Switch, LCD panel, Food

Sponge hardness test with PG-2.

Models	PG-2	PG-3	PG-4	PG-5
Capacity(N)	100	100	200	200
External diameter(mm)	Approx. φ2	Approx. φ3	Approx. φ4	Approx. φ5
Weight(g)	Approx.2	Approx.3	Approx.4	Approx.5
Mounting screw			M6	

Durability Test Fixture PR-500N/2500N

Designed for durability tests for retort pouch, heat sealed packages, box and so on.

PR-2500N

○Representative applications
Retort pouch, Packing box, Food pack, Tube container

Cardboard box durability test with PR-2500N.

Models	PR-500N	PR-2500N
Capacity(N)	500	2500
Measurable size(mm)	W194XD120XH105	W200XD140XH105
Weight(g)	Force gauge side: Approx.900	Force gauge side: Approx.3100
Mounting screw	M6	M10

PR-2500N: In accordance with a part of JIS Z 0238(1998)

For High Capacity[Disc type] PC series

Ideal for high capacity compression/ breaking testing up to 5000N. They can contact a test sample closely due to a free joint design.

PC series

○Representative applications
PET bottle, Ball, Tablet, Plastic

PET bottle compression strength test with PC-5060.

Models	PC-5040	PC-5060	PC-5100
Capacity(N)	5000	5000	5000
External diameter(mm)	φ40	φ60	φ100
Weight(g)	Approx.160	Approx.330	Approx.820
Mounting screw			M10

Sticking Test Fixture TKS-20N/250N

Designed for sticking test of thin samples such as film.

TKS-250N

○Representative applications
Film, Metal foil, PET bottle, Cloth, Fiber material

Film sticking test with TKS-250N

Models	TKS-20N	TKS-250N
Capacity(N)	20	250
Pin diameter(mm)	Approx. φ1	Approx. φ1
Pin weight(g)	Approx.22.2(Pin+Pin vice)	Approx.1.6
Mounting screw		M6

In accordance with a part of JIS Z 1707(1998)

Compression Test Fixture A-40/60, S-40/60

Ideal for crushing tests. Type A is made of aluminum and Type S is made of steel. Type A is for low capacity force gauges.

A-40

○Representative applications
Cushioning materials, Cushion, Tablet, Ball, Spring

Ball compression test with S-40.

Models	A-40	A-60	S-40	S-60
Capacity(N)	200	200	500	500
External diameter(mm)	φ40	φ60	φ40	φ60
Weight(g)	Approx.38	Approx.84	Approx.110	Approx.238
Mounting screw			M6	

PR-2500N: In accordance with a part of JIS Z 0238(1998)

For High Capacity[Rectangle type] SQ series

Ideal for high capacity compression/ breaking testing up to 5000N. They can contact a test sample closely due to a free joint design.

SQ series

○Representative applications
Tablet, Plastic, Plastic Package

Tablet strength test with PC-5060.

Models	SQ-5030	SQ-5075	SQ-5150
Capacity(N)		5000	
寸法(mm)	30X20	75X50	150X100
Weight(g)	Approx.65	Approx.500	Approx.1560
Mounting screw		M10	

Bending Test Fixture GA-10N/5000N

Designed for 3 points bending tests for metals, glasses, and more.

GA-10N

○Representative applications
Metal board, Plastic board, Carbon, Wire net, Ply wood board, Ceramic

Metal material bending test with GA-10N.

Models	GA-10N	GA-5000N
Capacity(N)	500	5000
Weight(g)	Force gauge side: Approx.100	Force gauge side: Approx.120
Mounting screw	M6	M10

Compression Test Fixture UR-8S/8M

Hemisphere shaped fixture made of urethane. It produces finger-touch.

UR-8S

○Representative applications
Switch, Electrical component, Touch panel

The switch tactile test with UR-8S.

Models	UR-8S	UR-8M
Capacity(N)	50	50
Weight(g)	Approx.5.4	Approx.5.2
Hardness	ShoreA50	ShoreA70
Mounting screw		M6

※ Please note the fixture does not react to capacitance touch panels.

For High Capacity[Spherical type] SP series

Ideal for high capacity compression/ breaking testing up to 5000N.

SP series

○Representative applications
Cushioning materials

Models	SP-5010	SP-5020	SP-5030
Capacity(N)		5000	
External diameter(mm)	φ10	φ20	φ30
Weight(g)	Approx.26	Approx.55	Approx.135
Mounting screw		M10	

Attachments for Tensile Testing

We offer a wide range of fixtures and grips for tensile testing such as a tearing test, a breaking tension test, and more.

Flat Chuck GC-1100/1200/5000

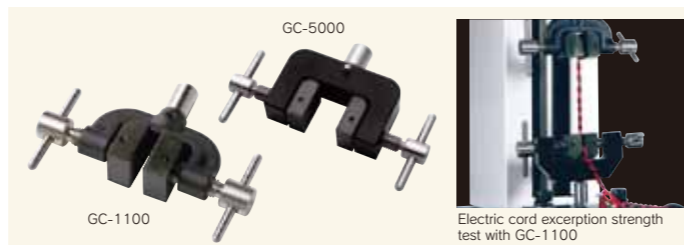
These grips can be used for a wide range of testing applications. Its jaw is manually tightened, and individually adjusted for samples up to 10-30 thick. (The maximum thick differs among models.)

Representative applications

Connector Cable Fastener Booklet Plastic Piece of metal

Models	GC-1100	GC-1200	GC-5000
Capacity(N)	1000	1000	5000
Aperture opening width(mm)	Max.10	Max.20	Max.30
Weight(g)	Approx.160	Approx.170	Approx.1400
Mounting screw	M6	M6	M10

※Fixed models(-F) are available, recommended when you attach it on a test stand since their attaching parts (mounting screws) are fixed.



Film Grip FC series

Ideal for gripping thin samples such as film and the like. FC-21U/41U/21UQ has urethane gripping part (only one side), thus the grips can hold the sample tightly but gently enough to avoid breaking samples. FC-21UQ is lever type, easy to grip samples.

Representative applications

Film Heat sealing Adhesive tape Magnetic card Substrate

Models	FC-21	FC-20	FC-40	FC-21U	FC-41U	FC-21UQ
Capacity(N)	250	500	500	250	250	250
Features	Light type	up to 500N	Wide type up to 500N	One side urethane	Wide grip one side urethane	One side urethane with a lever
Aperture width(mm)	Approx.20	Approx.20	Approx.40	Approx.20	Approx.40	Approx.20
Aperture opening width(mm)	Max.2	Max.2	Max.2	Max.2	Max.2	Max.0.2
Weight(g)	Approx.25	Approx.73	Approx.125	Approx.40	Approx.70	Approx.50
Mounting screw			M6			

※We provide a film cutter (page41)

※Fixed models(-Flare) available, recommended when you attach it on a test stand since their attaching parts(mounting screws)are fixed.



180 degree peel testing of adhesive tapes with FC-21

Wire Clamp Grip CW-500N

The wedge type grip for wire/cable, designed to secure a sample easily. It is not suitable for slippery or hard samples.

Representative applications

Cable Wire

Models	CW-500N
Capacity(N)	500
Aperture opening width(mm)	Max.5
Weight(g)	Approx.220
Mounting screw	M6



Cable tension strength test with CW-500N.

Small Grip SC-3/8

Ideal for gripping fine samples or measuring at narrow spaces.

Representative applications

Electrical lead Copper foil

Models	SC-3	SC-8
Capacity(N)	100	150
Aperture opening width(mm)	Max.1	Max.1
Weight(g)	Approx.20	Approx.21
Mounting screw		M6



Copper foil peeling test with SC-8.

Wedge Grip KC series

A self-tightening grip for wire, cable and so on. Designed to grip samples very easily, improving measurement efficiency. (It is not suitable for slippery or hard samples.)

Representative applications

Wire Cable Optical fiber cable Plastic Piece of metal

Models	KC-100	KC-1001	KC-5000
Capacity(N)	500	1000	5000
Aperture opening width(mm)	Max.10	Max.2	Max.5
Weight(g)	Approx.330	Approx.95	Approx.565
Mounting screw	M6	M6	M10

Cable tension strength test with KC-1001.



Pantograph Grip PGC series

A self-tightening grip designed to grip samples easily like a cloth pin. It can grip even deformable samples like rubber, resin, and so on. It is not suitable for slippery or hard samples.

Representative applications

Film Rubber Wire Cable Nonwoven fabric Plastic

Models	PGC-0505	PGC-0510	PGC-2530
Capacity(N)	500	500	2500
Aperture opening width(mm)	Max.20	Max.15	Max.15
Weight(g)	Approx.170	Approx.110	Approx.750
Mounting screw			M10

※S-1 or SR-1 is required when mounting PGC-0510 or 0505 on a force gauge.

※PGC-AD6 is required when mounting PGC-0510 or 0505 on a test stand.



Rubber tension strength test with PGC-0510.

Fine Point Chuck FP-50/51

Ideal for testing fine strings or threads. You can utilize it in measurement at narrow spaces.

Representative applications

Textile Fur Soft wire

Models	FP-50	FP-51
Capacity(N)	100	50
Aperture opening width(mm)	Max.0.5	Max.0.5
Weight(g)	Approx.19	Approx.8
Mounting screw		M6



Metal line tension strength test with FP-51.

Cam Grip GR-30/2000

Ideal for gripping thin and rectangle shaped samples. Easy steps to set a sample (1. Put through sample, 2. Pull its lever) improves measurement efficiency.

Representative applications

Tape Film

Models	GR-30	GR-2000
Capacity(N)	500	2000
Aperture opening width(mm)	Max.2	Max.4
Measurable width(mm)	Max.30	Max.50
Weight(g)	Approx.180	Approx.870
Mounting screw	M6	M10

※We provide a film cutter (P41).



Tape tension strength test with GR-30.

Wire Winding Grip GC-30,WC-2000

Ideal for testing strings, wire, and the like. It holds a sample by winding it around, therefore, loads on a sample get balanced, and samples get harder to be broken than nipping type grips.

Representative applications

Textile Wire Fur

Models	GC-30	WC-2000
Capacity(N)	500	2000
Diameter of bolt(mm)	M10	M16
Measurable line diameter(mm)	Max. φ1	Max. φ2
Weight(g)	Approx.136	Approx.900
Mounting screw	M6	M10



Fiber tension strength test with GC-30,WC-2000

Attachment for polypropylene band(PP band)tensile test PPC-5000N

Designed to clamp polypropylene band firmly without slipping

Representative applications

PP band

Models	PPC-5000N
Capacity(N)	5000
Aperture width (mm)	40
Aperture thickness (mm)	1
Weight (g)	Approx.620
Mounting screw	M10



PP band tension strength test with PPC-5000N.

Hook for Corrugated Cardboard Adhesion Test DF-60

Designed exclusively for corrugated cardboard opening strength testing.

Representative applications

Corrugated cardboard

Models	DF-60
Capacity(N)	250
Width(mm)	Approx.60
Weight(g)	Approx.145
Mounting screw	M6



Corrugated card board opening strength test with DF-60

Roller Grip GC-60/100

Ideal for testing elastic or deformable samples such as rubber, film, tape and so on. This grip holds a sample tightly since the sample is wound around the grip.

Representative applications

Rubber Film

Models	GC-60	GC-100
Measurable width(N)	500	500
Measurable width(mm)	Max.30	Max.50
Aperture opening width(mm)		Max.2
Weight(g)	Approx.158	Approx.300
Mounting screw		M6

※We provide a film cutter (P41).



Rubber tape tension strength test with GC-60.

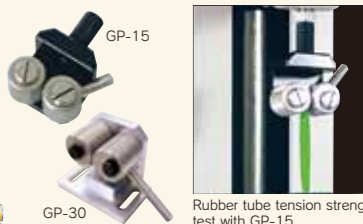
Knurled Cam Grip GP-15/30

Ideal for testing resin or soft samples becoming thin when they are pulled. Knurled cam mechanism reduces the possibility of breaking samples.

Representative applications

Rubber Cable Silicone Elastomer

Models	GP-15	GP-30
Capacity(N)	250	1000
Aperture opening width(mm)	Max.4.5	Max.10
Weight(g)	Approx.70	—
Mounting screw	M6	—



Rubber tube tension strength test with GP-15

Loop Tensile Test Fixture LOP-1000N

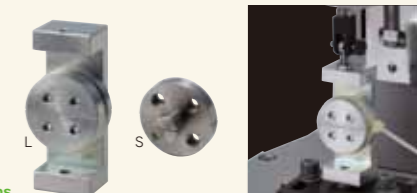
Ideal for tightening strength measurement of binding band

Representative applications

binding band

Models	LOP-1000
Capacity(N)	1000
Aperture width (mm)	10
Mandrel diameter (mm)	9.53 (Sample length below 127mm), 38.1 (Sample length exceed 127mm)
Mandrel weight (g)	Force gauge side(S):Approx140g Force gauge side(L):Approx195g
Mounting screw	M6

It is in accordance with a part of SAE AS23190B UL62275



Binding band tension strength test with LOP-1000N

For Tensile Strength Test of Sewed Button BC-15/PGC-BC

Designed for tensile strength test of cloth button. It can grip the button whose diameter is up to 15mm. You can set a sample easily, improving measurement efficiency.

Representative applications

Cloth button

Models	PGC-BC	Models	BC-15
Capacity(N)	300	Capacity(N)	300
Aperture opening width(mm)	Max.20	Measurable diameter(mm)	Max. φ15
Weight(g)	Approx.125	Measurable height(mm)	Max.3.5

※S-1 or SR-1 is required when mounting PGC-BC on a force gauge.



Cloth button tension strength test with PGC-BC

Attachments for Compression and Tension Testing

These attachments can be used for both compression and tension testing.

Pin Grip **CP-150N**

For gripping thin wire shaped samples. You can utilize it in measurement at narrow spaces.

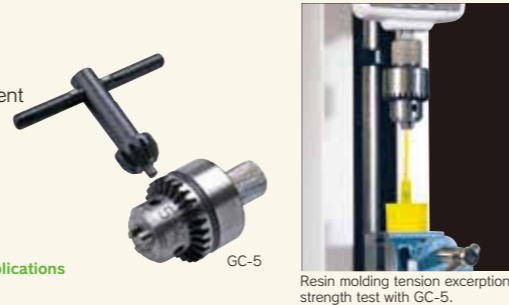


○Representative applications
Wire Plastic Component

Models	CP-150N
Capacity(N)	150
Aperture opening width(mm)	Approx. ϕ 0~3.2
Weight(g)	Approx. 22
Mounting screw	M6

Jacob's Chuck **GC-5/15**

Ideal for gripping round cylindrical shaped samples. Designed to prevent the samples from slipping.

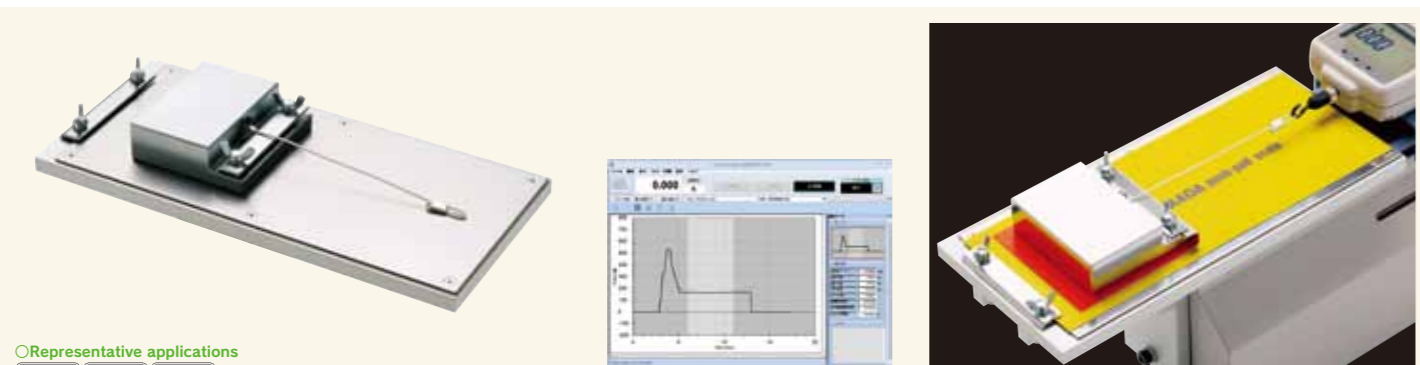


○Representative applications
Plastic

Models	GC-5	GC-15
Capacity(N)	500	1000
Aperture opening width(mm)	Approx. ϕ 0.5~6.5	Approx. ϕ 2.0~13
Weight(g)	Approx. 235	Approx. 500
Mounting screw	M6	M6

Attachments for Coefficients of Friction Testing

The included software automatically calculates Coefficient of Kinetic friction and coefficient of Static friction and draws graphs.



○Representative applications
Paper Film Panel

Force Recorder Standard COF Ver.

Paper coefficient of friction test with COF2-10N

Models	COF2-2N	COF2-10N	COF2-2N-V	COF2-10N-V
Compatible test stand	Horizontal type MH2		Vertical type $\#$ 1	
Weight of the weight cart(g)	200	1000	200	1000
Measurable size(mm)	Thickness: Max. 1.5 Length: Max. 150			

*You need A-1 or S-1 (Page 35) to attach the weight to a force gauge.

* $\#$ 1 Some vertical test stand can not be combined with the fixture. Please contact us if you need the details.

COF-2N, COF-2N-V: In accordance with a part of JIS K 7125(1999).

Fixture for Shear Test

A Set of Fixtures for Shear Test **LF**

This set is designed for shear test of QFP lead and chip components, including jigs and a XY stage. The stage can manually adjust a test position precisely at light feed.



○Representative applications
QFP lead Chip component

Chip components solder joints shear strength test

Models	LF
The set content	For QFP lead strength test: ① Hook attachment / QFP-45-1 @45 degree table/QFP45-2 For soldered chip shearing test: ③ 90 degree chip shear attachment/TIP90-1 @90 degree table/TIP90-2 For QFP lead strength test and soldering shearing test: ⑤ XY table/QFP-1
Capacity(N)	100
Table dimensions	200X150
Weight(g)	① QFP45-1: Approx. 60g ③ TIP90-1: Approx. 50g

It is in accordance with JIS Z 3198-6(2003), JIS Z 3198-7(2003)

Chip Peel Fixture **GT-10/20**

Ideal for peel (shear) testing for soldered or adhered electric components.



○Representative applications
Electrical component Flange cap

Chip peeling strength test with GT-10

Models	GT-10	GT-20
Applying force	for Tension	for Compression
Capacity(N)	500	
Weight(g)	Approx. 34	
Mounting screw	M6	

Attachments for Wire Harness Testing

Combining these attachments with a force gauge and a test stand, you can create a wire harness testing machine. These attachments are designed to grip different sizes of harnesses.

~500N Accessory Attachments for A Manual Wire Clamp Pull Tester [LH-500N(P48)]

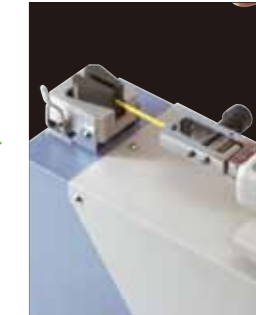
Terminal clamp jig

It is designed to secure a crimp terminal easily and quickly. For engaging it, you only have to hook it between its jaws.



Wire clamp jig

It is designed to secure the ends of wire/cable tightly and easily. For engaging sample, you only have to pull its lever and put your sample on.



Models	CH-500N
Capacity(N)	500
Aperture opening width(mm)	Max. 6
Weight(g)	Approx. 210
Mounting screw	M6

Models	CW-500N
Capacity(N)	500
Aperture opening width(mm)	Max. 5
Weight(g)	Approx. 220
Mounting screw	M6

~1000N Attachments for Vertical Test Stands

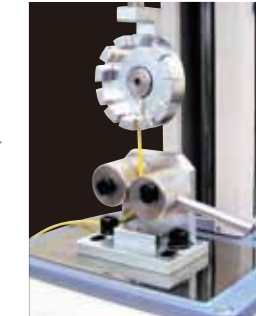
Rotary wire terminal jig

The grip secures wire terminals, cables, connectors, and other samples. It has grooves of different sizes to accommodate a wide range of wire diameters up to 8mm. You only have to rotate the wheel to the desired size.



Wire clamp jig

It is for securing the end of wire/cable. Knurled cam mechanism reduces the possibilities of breaking samples.



Models	FW-12
Capacity(N)	1000
Measurable diameter(mm)	ϕ 1~8
Weight(g)	Approx. 380
Mounting screw	M6

Models	GP-30
Capacity(N)	1000
Aperture opening width(mm)	Max. 10
Weight(g)	Approx. 880

~5000N Attachments for High Capacity

Wire terminal jig

It engages terminals from ϕ 4 to ϕ 12mm diameter.



Wire clamp jig

It is designed for preventing wire coating from breaking.



Models	CH-5000N
Capacity(N)	5000N
Measurable diameter(mm)	ϕ 4~12 (Internal diameter of the terminal hole)
Weight(g)	Approx. 315
Mounting screw	M10

Models	CW-5000N
Capacity(N)	5000
Measurable diameter(mm)	Max. ϕ 30 (Cable diameter)

You can conduct a test complying with a part of JIS C 2805 (2010) using CH-5000N and CW-5000N together.

Attachments for Peel Testing

We offer fixtures for peel testing (adhesive testing) of sticky tapes, coating surfaces, and more.

90 Degree Peel Test Fixture **P90-200N/200N-EZ**

Ideal for 90 degree peel testing for adhesive tape and the like. P90-200N keeps the peeling degree at 90 degree.
The moderated price model is P90-200N-EZ.

○Representative applications

Adhesive tape, Copper foil, Magnetic card, Poulitice

Models	P90-200N	P90-200N-EZ
Measurable force(N)	~200	0.4~200
Measurable size(mm)	Length:Max.155 Width:Max.80	

P90-200N is in accordance with a part of JIS Z 0237(2009) and JIS C 5016(1994)
※We provide a film cutter (P41). With the cutter, you can cut film in constant-width.
※We also provide a rubber roller according to JIS (See P41 for further information).



P90-200N

Adhesive tape peeling strength test at 90 degree with P90-200N.

180 Degree Peel Test Fixture **P180-200N**

Ideal for 180 degree peel testing for adhesive tape and so on.

○Representative applications

Adhesive tape

Models	P180-200N
Measurable force(N)	0.5~200
Measurable size(mm)	Length:Max.150 Width:Max.40

It is in accordance with a part of JIS Z 0237(2009).

※We provide a film cutter (P41). With the cutter, you can cut film in constant-width.
※We also provide a rubber roller according to JIS (See P41 for further information).



Adhesive tape peeling strength test with P180-200N.

Jig for opening pull-tab of beverage can **PTD-100N**

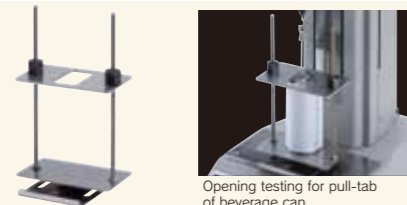
Designed to pull up aluminum beverage can's pull-tab to 90 degree.

○Pull-tab of beverage can

Models	PTD-100N
Capacity (N)	100
Maximum sample size (mm)	Height:170 Width:90

PTD-100N is in accordance with a part of JIS S 0022 (2001).

※We provide an optional tray to receive outflowing contents. (See P41 for further information.)
※You need A-1,S-1, or SR-1 (Page35) to attach the upper part of the fixture to a force gauge.



Opening testing for pull-tab of beverage can

Coating Surface Peel Test Fixture **TH-1000N/5000N**

Ideal for peel testing of coating surface. It comes with 5 peeling heads(10 peeling heads for TH-1000N-7).

○Representative applications

Painted surface

Models	TH-1000N-7	TH-1000N-20	TH-5000N-20
Capacity(N)	1000	1000	1000
Upper fixture Adhesive area shape	Diameter 7mm	Diameter 20mm	Diameter 20mm
(Force gauge side) Weight(g)	Approx.40	Approx.90	Approx.195
Mounting screw	M6	M6	M10
Lower fixture The center hole diameter (mm)	Diameter 30	Diameter 30	Diameter 30

TH-1000N-7 is in accordance with a part of JIS K 5600-5-7 (2014).

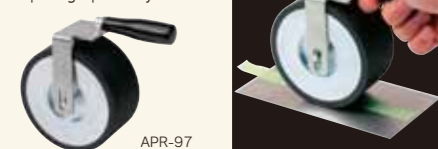
TH-1000N-20 and TH-5000N-20 are in accordance with a part of JIS K 5600-5-7 (1999).



TH-5000N-20N

Rubber Roller for Peel Test **APR-97**

With this roller, you can apply stable pressure to stick samples, improving repeatability.



APR-97

Models	APR-97
The roller weight(g)	Approx.2000
The sample contacting part material	Rubber(Hardness A80)

It is in accordance with a part of JIS Z 0237(2009)

Film Cutter **FSC-1525**

This cutter enables you to cut film in constant-width, improving measurement efficiency. It comes with 2 sets of spare edges.



Model	FSC-1525
Width to cut	15~70mm
Width adjustment block	15mm/1inch

FSC-1525 is in accordance with ASTM F88, JIS Z 0238 (1998), and JIS Z 1707 (1997).

Optional tray **PTW-10IN**

For receiving outflowing contents. It is attached on an IMADA test stand.



You can use the tray like this.

Model	PTW-10IN
Size (mm)	264 x 178
Attachments using with this tray	P45-50N, PTD-100N, PTF-100N

※Even though you combine the tray with a test stand, remember that the stand is still weak in water.

Attachments for Medical Equipment

Attachment for Probe Tack Test **MED-IS-20N**

Attachment for measuring adhesiveness of sticking plaster etc. by tack test.

○Representative applications

Sticking plaster

Model	MED-IS-20N
Capacity (N)	20
Surface diameter of contact (mm)	5
Weight (g)	Force gauge mounting side: Approx. 70g
Mounting screw	M6

Partly in complying with ASTM D 2979 (2016)

In compliance to 6.12.3.4 of the Probe Tack Method by the Japanese Pharmacopoeia



Sticking plaster adhesion test with MED-IS-20N

※GF-1 (adaptor for stand fixing) of the photo is not included in this set.

Attachment for Pull Out Test **MED-NPT-200N**

Attachment for testing pull out strength of a needle from a needle base.

○Representative applications

Needle

Model	MED-NPT-200N
Capacity	200
Measurable needle diameter (mm)	0.3-20
Measurable length diameter (mm)	above 10
Weight (g)	Force gauge mounting side: Approx. 210g
Mounting screw	M6

Partly in complying with JIS T3209(2011)/T3220(2011)/T3221(2011)/T3222(2011)/T3223(2016)/T3228(2011)/T3229(2011)

Partly in complying with ISO 7864(2016)/10555-5(2013)/11608-2(2012)



Needle pull out strength test with MED-NPT-200N

Attachment for Compression Test of Syringe **MED-SCT-500N**

Attachment for Compression Test of Syringe.

○Representative applications

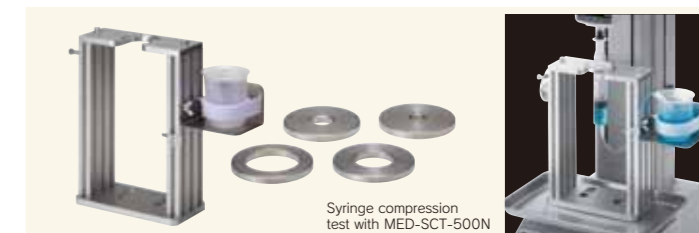
Syringe

Model	MED-SCT-500N
Capacity (N)	500N
Measurable capacity(ml)	0.5~50
Diameter of attached outer cylinder (mm)	10/15/24/33
Installation	Mounting on the stand

Partly in complying with ISO 7886-1(2017)

※We provide an optional tray to receive outflowing contents. (See P41 for further information.)

※You need S-2 (Page35) to push syringe.



Syringe compression test with MED-SCT-500N

Other Attachments

Vice Grip **GT-30/2000N**

Wide opening range accommodates different sizes or shaped samples. Use with vertical test stands. (Contact us for models available with this grip.)



Models	GT-30	GT-2000N
Capacity(N)	1000	2000
Aperture opening width(mm)	Max.38	Max.64
Mounting	to Test stand table	

XY Table **XY-500N**

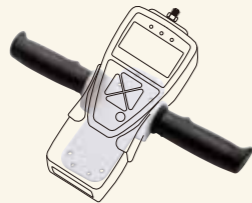
You can put a sample at the center using this XY table since the stage can be moved manually in X and Y directions at light feed. Use with vertical test stands. (Contact us for models available with this table)



Models	XY-500N
Capacity(N)	Tension:500 Compression:1000
X-Y movement amount	±30
Mounting	to Test stand table

Optional Handle for Force Gauges **FOH-1**

Combining a force gauge with this handle by screws, you can apply force stably.



Models	FOH-1
Compatible model	1000N or less range of ZTA/ZTS/DSV/DST/PSS/PS/PSM/FS/FB series
Weight(g)	Approx.500

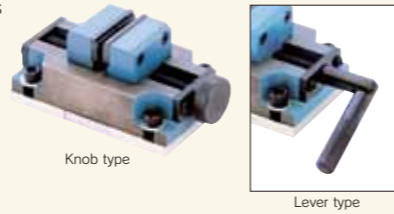
Conversion Adapter **CA series**

Gauges' threads (a part to mount an attachment) differ in size among models, thus you can use these adaptors to combine a force gauge and a desired attachment even if their sizes are different.

Models	Screw diameter	Capacity	Purpose
CA-F6T4	M6(Female Screw)→M4	100N	When mounting a M4 screw attachment of FRTS to a M6 screw thread of a force gauge.
CA-F6T10	M6(Female Screw)→M10	500N	When mounting a M10 screw attachment to a M6 screw thread of a force gauge.
CA-F10T6	M10(Female Screw)→M6	500N	When mounting a M6 screw attachment to a M10 screw thread of a force gauge.
CA-F4T6	M4(Female Screw)→M6	100N	When mounting a M6 screw attachment to FRTS series.
CA-F5T4	M5(Female Screw)→M4	100N	When mounting a M4 screw attachment to a M5 screw thread of Load cell LMU series.
CA-F5T6	M5(Female Screw)→M6	500N	When mounting a M6 screw attachment of FRT series to a M5 screw thread of a load cell LMU series.
CA-8T4	M8→M4	100N	When mounting a M4 screw attachment of FRT series to M8 screw thread of a load cell LU series. ※It does not mount to a T nut.
CA-8T6	M8→M6	500N	When mounting a T nut / M8 screw thread of load cell LU series to M6 screw attachment.
CA-8T10	M8→M10	2000N	When mounting a T nut / M8 screw thread of load cell LU series to M10 attachment.

Self-centering Vice Grip **GTW-50R/50L**

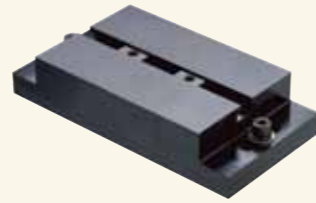
Self-centering vice. 2 models are available: 1. Knob model (high operability type) 2. Lever model (Strong clamp type) Use with vertical test stands. (Contact us for models available with this grip)



Models	GTW-50R	GTW-50L
type	Knob type	Lever type
Capacity(N)	500	1000
Aperture opening width(mm)	Max.68	
Mounting	to Test stand table	

T-Slot Table **TS-5000N**

It is for holding attachments, being utilized to mount/remove attachments quickly. You can also center your sample readily since the table moves in X/Y directions.



Models	TS-5000N
Capacity(N)	5000
Diameter of T-nut hole	M8
The space between T-nuts	Max.125
Movement amount(mm)	X: ±64 Y: ±15
Mounting	to Test stand table

Attachment Adapter **JF/EJ series**

The mounting adapter for grip type attachment for tension test. They helps smooth sample fixation and precise adjustments of gripping positions and angle.



Models	JF6-50N	EJ6-1000N	EJ10-5000N
Capacity(N)	50	1000	5000
Mounting screw for a force gauge	—	M6	M10
Mounting screw for a chuck fixture	M6	M6	M10
Weight(g)	Approx.8	Approx.29	Approx.140

※Please contact us for the detail that which attachment is available.
※A-1/S-1/SR-1(Page 35) is required to mount JF6-50N on a force gauge.



Eye Bolt and Eye Nut for Load Cells

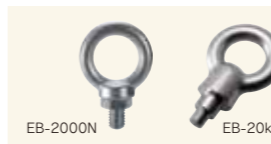
Hoisting attachment for tension test by load cells (Page 17).

for Load Cell DPU series

Eye Bolt **EB series**

It hangs a test sample or a load cell by hooking chain, rope, hook etc.

Models	EB-500N-M6	EB-2000N	EB-20kN
Compatible load cell	DPU-5N~500N	DPU-1000N/2000N	DPU-10kN/20kN
Capacity	500N	2000N	20kN
Weight(g)	Approx.18	Approx.137	Approx.1100
How to mount	M6 Male Screw	M12 Male Screw	M18 Male Screw



for Load Cell LU series

Eye Bolt **EB-500N-M8**

It hangs a test sample or a load cell by hooking chain, rope, hook etc.

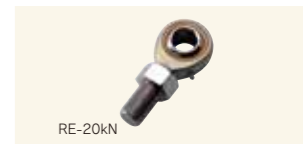
Models	EB-500N-M8
Compatible load cell	LU series
Capacity(N)	500
Weight(g)	Approx.39
Mounting screw	M8 Male Screw



Rod End[for shafts] **RE-20kN**

A shaft can be put through it.

Models	RE-20kN
Compatible load cell	DPU-10kN, DPU-20kN
Capacity(kN)	20
Weight(g)	Approx.300
Mounting screw	M18 Male Screw



for Load Cell LMU series

Eye Nut **EN-500N**

It hangs a test sample or a load cell by hooking chain, rope, hook etc.

Models	EN-500N
Compatible load cell	LMU series
Capacity(N)	500
Weight(g)	Approx.11
Mounting screw	M5 Female Screw



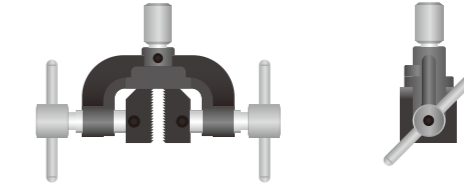
Custom Order Examples

1.Resizing Ready-Made Attachment

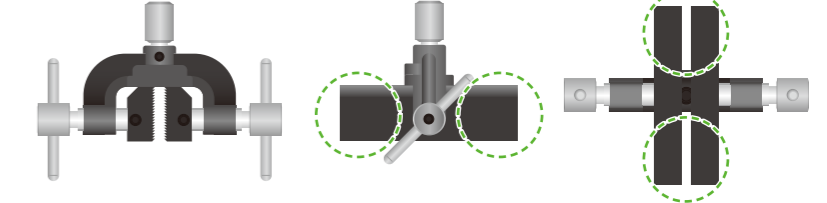
[Example. GC-1200 series Length change of grip part]

We can resize the width and the length of the grip part.

Standard



Custom made example of wider grip of GC series



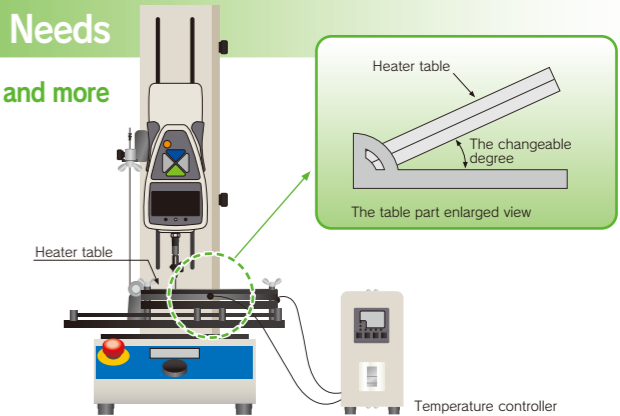
We flexibly change sizes (width, depth) of fixtures and grips to fit your testing needs. Please contact us for the details.

2.Changing Specifications to Fit Your Testing Needs

● Changing conditions such as measuring angles, temperatures, and more

[Example: Specification change of peeling test fixture]

We can offer a degree changeable table for peel testing. Besides, we can combine a heater with a table of a test stand.



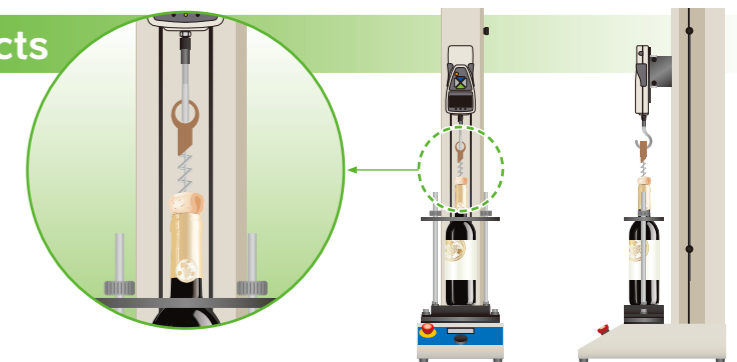
● Measurement in accordance with standards such as Japanese Industrial Standard, ISO or ASTM.

We offer force measuring instrument complying with standards' requirement (measuring speed, fixture design, etc).

3.Completely Original Products

[Example: Cork excerpction measuring unit]

We offer the special use fixture for your sample to improve measuring repeatability and efficiency.



FSA series Force-Displacement Analysis Unit

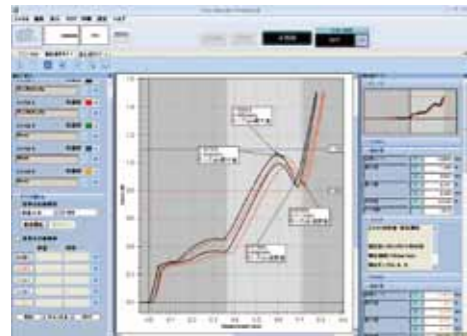
Simple but High-performance Measurement Unit for Force and Displacement Analysis.

With this unit, you can measure deformation amount (displacement) to compression (tension) force.

It is ideal for tactile test and material characteristic evaluation.



It draws Force vs Displacement graphs in real time at Max.2000Hz



Basic Functions of Force-Displacement Measurements

- Easy connection to PC by USB
- Smooth graphing performance at 2000Hz
- Graph zooming function
- Comment insertion on graphs
- Quick data export to WORD, EXCEL, PDF

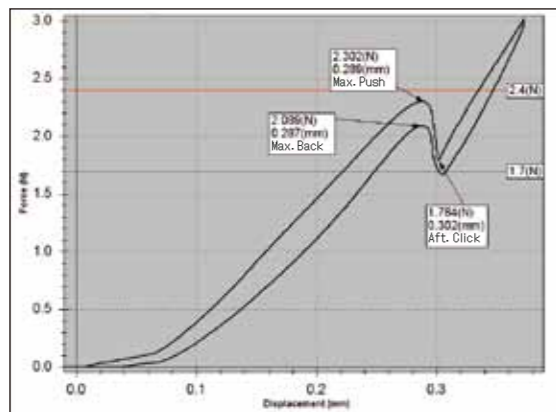
Useful Functions for Measurements and Analysis

- Graph comparing function Max 5 graphs.
- Reference line function
- Statistical calculation (maximum/ minimum/ average values).
- Automatic displacement reset at the measurement start (when the force reaches the set force value)
- Test trigger function (when the force reaches the set displacement value)

The Advantage of Measuring Displacement and Force Together.

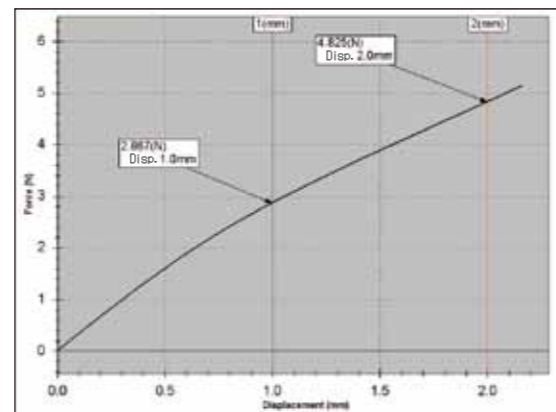
Since you can see force transition with reference to displacement, this unit is perfect for tactile testing, material characteristic evaluation, and more.

Example of A Switch Characteristic Evaluation



Curves in force-time graphs constantly goes from left to right, and never come back to left. On the other hand, curves in force-displacement graphs come back to left since it is drawn based on displacement. Therefore, force-displacement analysis method is better choice to identify the hysteresis(zero reversion).

Example of Plastic Bending Test



Measuring displacement means identification of deformation amount. It is easy to check "How much force does it need to transform a testing sample(dent a sample at ○○mm)?"

Other Test Examples

- Simple evaluation of spring characteristic
- Simple evaluation of rubber product characteristic
- Cushioning material repulsion test
- Car cushion hardness test
- Fitting quality test of cosmetic containers
- Extract test of connectors
- Peel test with distance of tape and films
- Compression and Breaking test for electric components
- Pulling test for slide structures.
- Repulsion test for sport equipment (Tennis ball)
- Food texture test
- LCD panel strength test

Configuration

A Force Gauge

It measures force, and indicates force and displacement values. You can combine it with different attachments to handle a wide range of force testing applications. You can easily put it on (off from) a test stand by screws.

A Test Stand

It is a machinery to move a force gauge up and down (left and right). You can move it with up/down (left/right) buttons. You can easily set up test requirement such as test speeds, pause and more with its dial.

A Cable

It connects the force gauge and the test stand for control. (FSA-MSL does not include this cable since it operates manually.)

Standard Attachments

Attachments are integral components of this testing system. Although this testing system comes with some basic attachments, you can combine optional attachments as required. We offer a wide range of optional attachments to fit various measurement needs.



Software

This software can draw force-displacement graph. It captures force and displacement values at Max. 2000/sec, and draw them into graphs smoothly. It automatically starts graphing using Trigger function. ※MSL-FSA does not have this Trigger function.



Measurement unit	Force	N, kgf, lbf ※
	Displacement	mm, inch ※
Range		2N(200gf), 5N(500gf), 20N(2kgf), 50N(5kgf), 100N(10kgf), 200N(20kgf), 500N(50kgf), 1000N(100kgf), 2500N(250kgf)
Resolution	Force	4 digit (e.g. Resolution of 5N force gauge is 0.001N)
	Displacement	0.001mm (on software; Force Recorder Professional) 0.01mm (on force gauge display)
Accuracy	Force	+/-0.2% F.S. +/-1digit
	Displacement	+/-0.1mm +/-1 digit (with no load)
Sampling rate		2000 data/sec
Output		USB, Serial(RS232C), Analog(Approx. +/-2V), Comparator, Overload, Sub comparator, USB flash drive * USB flash drive is not included.
Accessories		Instruction manual, Inspection certificate, Power cable, 2 pcs of spare fuses, Driver CD-ROM(including software for data log "ZT-Logger"), Graphing software "Force-Recorder Professional".

Note: ①A force gauge is separately sold. ②Actual measuring capacity depends on the force gauge's capacity. However, when the test stand's capacity is less than the force gauge's capacity, you can measure force up to the test stand's capacity. (※1)The maximum height or length means the distance between the test stand table and the thread of the force gauge ZT series general type(1000N or less)at the highest position of the test stand. The distance does not include attachments. The distance of FSA-2.5K2 is in case of mounting ZT series high capacity type. ※The unit is different from Japanese domestic models.

We provide a wide range of testing system to fit your needs.

Easily

- You can digitally set up test requirements such as speed, pause, a number of times, and more with simple operation (Except FSA-MSL).
- You can start graphing by one click or record data automatically.

Precisely

- You can capture data accurately due to its high sampling rate (Max. 2000Hz).
- You can overlay graphs for detailed analysis.

Portable (Knob operation, Up to 50N)

- Capacity: 2~50N (※1)
- The sample maximum height: 80mm (※2)



○ Easy knob operation

With a tripod, you can use it for wider range of testing applications. You need an optional adaptor to mount it on a tripod.



Since it is lightweight, you can carry it to various places. You can also fix it on wall by screws.

Models: **FSA-MSL- 2~50N**

Compact and Vertical (Motorized, Up to 500N)

- Capacity: 2~500N (※1)
- The sample maximum height: 235mm (※2)
- Speed: 10~300mm/min (Standard)



You can set up testing speed digitally. It is compact enough to be put on a desk.

Models: **FSA-0.5K2- 2~500N**

Compact and Horizontal (Motorized, Up to 500N)

- Capacity: 2~500N (※1)
- The sample maximum height: 245mm (※2)
- Speed: 10~300mm/min (Standard)



You can set up testing speed digitally. It is compact enough to be put on a desk.

Models: **FSA-0.5HK2- 2~500N**

Multifunctional and Accurate (Motorized, Up to 1000N)

- Capacity: 2~1000N (※1)
- The sample maximum height: 320mm (※2)
- Speed: 0.5~600mm/min (Standard)



You can set the travel distance to move a force gauge digitally. You can also store test requirements in it.

Since this test stand has high intensity, you can measure force and displacement more accurately.

Models: **FSA-1KE- 2~1000N**

High Capacity (Motorized, Up to 2500N)

- Capacity: 2~2500N (※1)
- The sample maximum height: 320mm (※2)
- Speed: 10~300mm/min (Standard)



You can set up testing speed digitally. You can measure force up to 2500N.

Models: **FSA-2.5K2- 2~2500N**

Special Testers

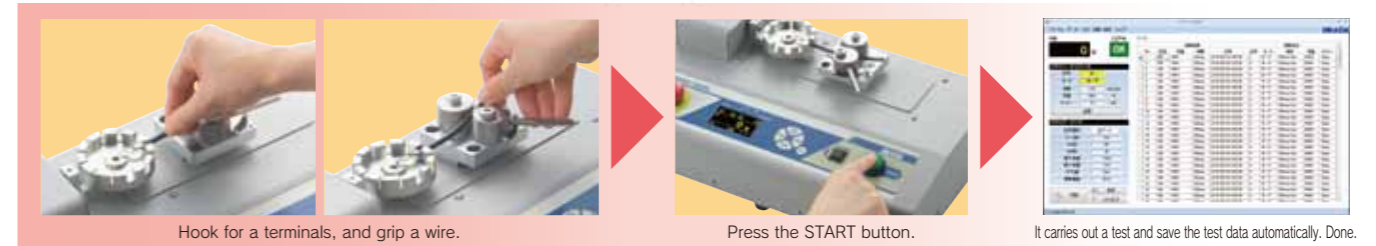
Automatic crimp tester

ACT-1000N

[You can carry out the test in accordance with a part standards UL 486A-486B and JISC2805.]

- The start button provides smooth flow from testing to saving data including OK/NG judgment.
- You can save test conditions up to 26 patterns in it, which is useful for multiple tests. You can recall a suitable setting easily and instantly.
- 2 test modes are available; "BREAK mode" and "KEEP mode". With BREAK mode, you can detect the force when a crimp terminal is broken. With KEEP mode, you can test the tensile durability at a set point.

ACT-1000N provides speedy test due to its ease of use.



Hook for a terminals, and grip a wire.

Press the START button.

It carries out a test and save the test data automatically. Done.

Optional attachment



ACT-T-01 Jig for round terminals:
You can easily fix round terminals.



ACT-T-02 Jig for rod terminals:
You can grips a small terminal such as a rod terminal.

Model	ACT-1000N	ACT-1000N-V300
Capacity	1000N	
Accuracy	+/-0.5% F.S +/-1 digit	
Unit	N, kgf, lbf (※1)	
Sampling rate	2000Hz	
Measuring speed	10/25/50/100 mm/min (Choose from 4 steps)	25/50/100/300 mm/min (Choose from 4 steps)
Stroke	Approx. 50mm	
Allowable sample diameter	Terminal side: 1~8mm Harness side: 1~8mm	
Allowable sample length	100mm or more	
Mode	BREAK mode / KEEP mode	
Output	USB/RS232C/pass or fail decision signal (OK/NG)	
Security lock	Emergency stop button and Overload prevention (at the power on)	
Power supply	AC100~240V	
Operating environment	Temperature: 0~40 degree Celsius Humidity: 20~80%RH	
Accessory	Software, USB cable, Power cord, Inspection Certificate	

※1 This is the specifications for International model.
Please note Japanese domestic model shows force in N only.



It comes with fixtures for wire and terminal.

□ Size: W400XD240XH150mm
□ Weight: Approx. 1.1kg

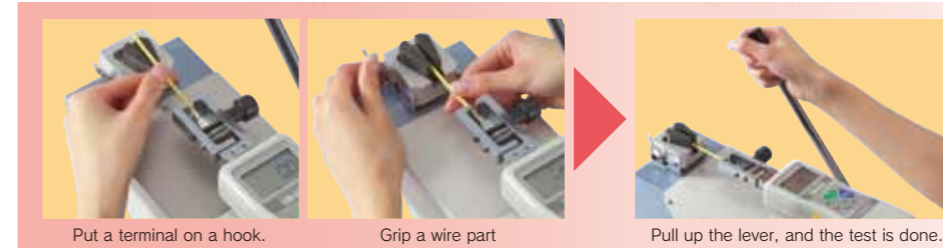


Test Lever Stand

LH-500N

- It is ideal for tensile strength test of crimped terminal.

Designed exclusively for wire harness testing = Easy manipulation → Improve measurement efficiency



Put a terminal on a hook.

Grip a wire part

Pull up the lever, and the test is done.

Accessory Attachment



CW-500N Wire Clamp fixture:
Wedge type. You can grip wire/cable easily by pulling the lever.



CH-500N Terminal Clamp fixture:
It is wide size fixture as gripping a crimp contact.

□ Size:
Approx. W155XD450XH182mm
□ Weight:
Approx. 1.1kg

Model	LH-500N
Capacity	500N
Accessory	Terminal Clamp Fixture: CH-500N Wire Clamp Fixture: CW-500N * Force gauge is not included.



※1 Force gauge's capacity decides the capacity of testing system.
※2 The sample maximum height means the distance between the test stand table and the thread of the force gauge ZT series general model (1000N or less) at the highest position of the test stand head. The figure for FSA-2.5K2 is in case of ZT series high capacity model combined.

Peel Tester

IPTS-5N

- It enables peel test of embossed carrier tape complying with IEC.
- It graphs the measurement accurately due to its high sampling rate, at Max. 2000Hz.
- It handles a wide range of test speed up to 1500mm/min.
- One-click Operation: The start button provides smooth flow from testing to data saving.



Size: Approx. W665 × D300 × H140mm
Weight: Approx. 11 kg

Related Standards

- A part of JIS C0806-3(2014) [Packaging of components for automatic handling-Part 3: Packaging of surface mount components on continuous tapes]
- A part of IEC 60286-3(2013) [Packaging of components for automatic handling - Part 3: Packaging of surface mount components on continuous tapes] (Peel test part)



Peel test of embossed carrier tape

High Speed Peel Tester

IPTS-20N/50N

- It graphs the measurement accurately due to its high sampling rate, at Max. 2000Hz.
- It handles a wide range of test speed up to 1500mm/min.
- One-click Operation: The start button provides smooth flow from testing to data saving.
- It enables to test samples at a thickness of up to 0.5mm.



Size: Approx. W665 × D300 × H140mm
Weight: Approx. 11 kg

Related Standards

- A peel test part of ISO 29862:2007 [Self adhesive tapes - Determination of peel adhesion properties] (A peel test part of JIS Z0237:2009)
- A peel test part of ISO 8510-2:1990 [Adhesives - Peel test for a flexible-bonded-to-rigid test specimen assembly - Part 2 : 180° peel] (A peel test part of JIS K6854-2:1999)
- A peel test part of Japanese Pharmacopoeia

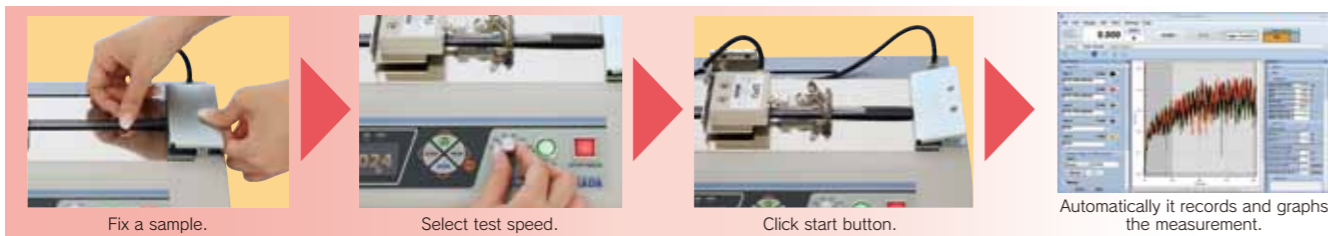
Test Samples

Label, adhesive tape, stickers, screen protector sheet, laminated package, adhesive tape for first-aid, postcard, magnetic tape, foil laminated film, electrode's line of solar cell, copper foil of circuit board.



Peel test of copper foil

IPTS series is specialized for 180-degree peel test. =It ensures the high performance of your works and accurate test.



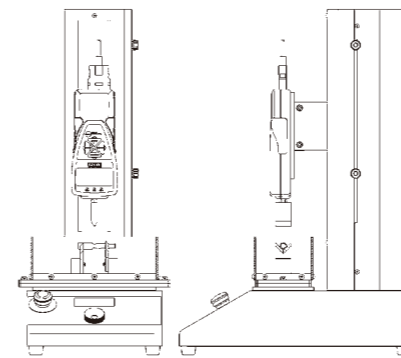
Model	IPTS-5N	IPTS-20N	IPTS-50N
Capacity	5N	20N	50N
Resolution	0.001N		0.01N
Unit※	N, gf, ozf		N, kgf, lbf
Accuracy	±0.2%F.S. ±1digit		
Overload	Approx.150%F.S. (It warns with light flashing and buzzer when the force is over 110% of capacity.)		
Sampling rate	Max.2000 data / sec (2000Hz)		
Test speed	120, 200, 300, 500, 1000, 1500mm/min(Switchable)		
Stroke (length)	Travel of load cell: Approx. 400mm (Peel length : Approx.200mm)		
Peel angle	165° -180° (Height and angle are adjustable.)		
Max. sample width	Adhesion: 88mm(Film clip: 40mm, Sample clip: 95mm)	Adhesion: 88mm(Grip: 20mm, Clamp: 50mm)	
Max. sample thickness	Cover film: 0.5mm	Grip: 3mm	Clamp: 13mm
Safety device	Emergency stop button, Overload prevention (Valid only when the power is ON) (※1)		
Power	AC100~240V free input(※2)		
Weight	Approx. 11kg		
Operating environment	Temperature: 0~40°C Humidity: 20~80%RH		
Accessories	Force Recorder Standard (graphing software), USB cable, Power cable, Film grip, Inspection certificate, Instruction manual		

※1 You cannot prevent overload in some cases.
 ※2 Please specify the voltage when you order.(Accessory varies depending on voltage).
 ※3 The film grip attachments for IPTS-5N and IPTS-20N/50N are different.
 ※ Japanese domestic models do not indicate gf/kgf/ and ozf/lbf.

We provide semi/full customized testers to comply with your desired standards. IMADA's products are highly evaluated because of the quality and the fact that they have been used worldwide in every industry for many decades, making your quality control a success.

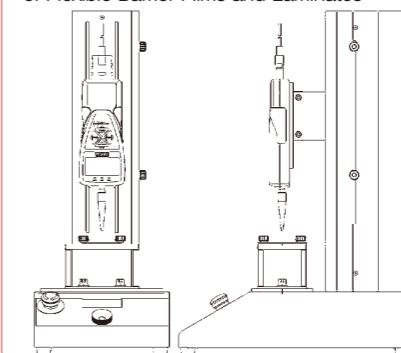
In Medical industry

Standard: **ISO9187-1**
Measurement abstract:
Injection equipment for medical use -- Part 1: Ampoules for injectables



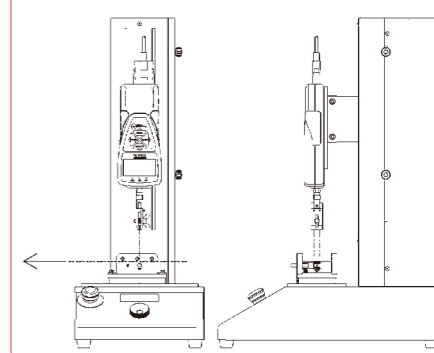
In Plastic industry

Standard: **ASTM F 1306-90**
Measurement abstract:
ASTM F1306 - 90(2002) Standard Test Method for Slow Rate Penetration Resistance of Flexible Barrier Films and Laminates



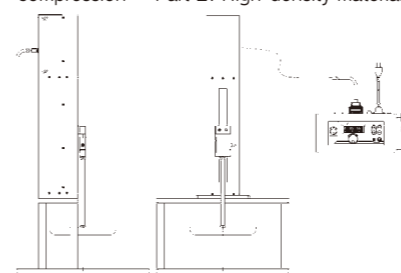
In Electric industry

Standard: **IEC249-1**
Measurement abstract:
Base materials for printed circuits. Part 1 : Test methods



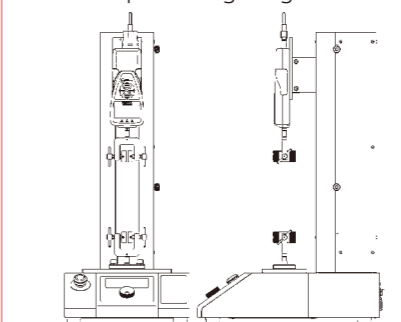
In Furniture industry

Standards: **ISO3386-1, ISO3386-2**
Measurement abstract:
(-1) Polymeric materials, cellular flexible -- Determination of stress-strain characteristics in compression -- Part 1: Low-density materials
(-2) Flexible cellular polymeric materials -- Determination of stress-strain characteristics in compression -- Part 2: High-density materials



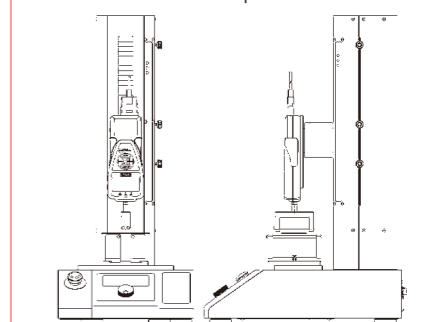
In Textile industry

Standard: **ISO13935-2**
Measurement abstract:
Textiles -- Seam tensile properties of fabrics and made-up textile articles -- Part 2: Determination of maximum force to seam rupture using the grab method



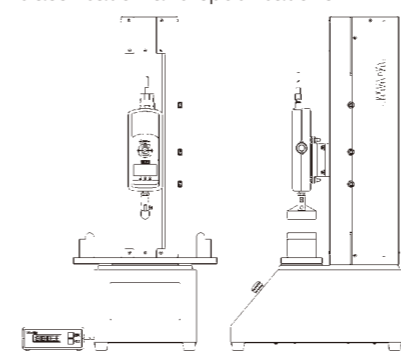
In Ceramic industry

Standard: **ISO 14704**
Measurement abstract:
Fine ceramics (advanced ceramics, advanced technical ceramics) -- Test method for flexural strength of monolithic ceramics at room temperature



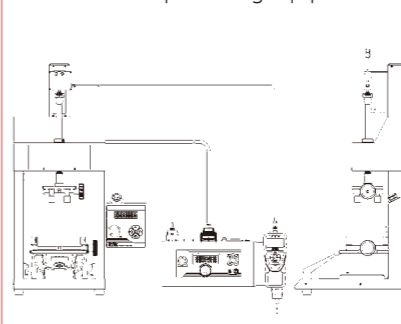
In Architecture industry

Standard: **ISO16894**
Measurement abstract:
Wood-based panels -- Oriented strand board (OSB) -- Definitions, classification and specifications



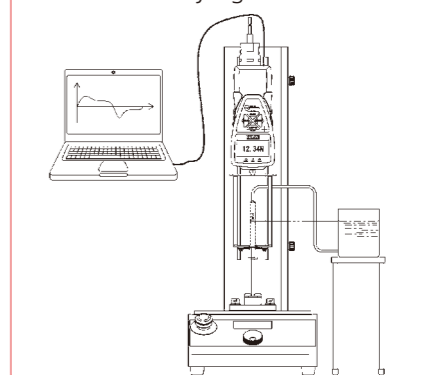
In Medicine industry

Standard: **ASTM D7860-14**
Standard Test Methods for Measurement of Torque Retention for Child Resistant and Non-Child Resistant Packages with Continuous Thread Closures Using Automated Torque Testing Equipment



In Medical industry

Standard: **ISO7886-1**
Measurement abstract:
Sterile hypodermic syringes for single use -- Part 1 : Syringes for manual use



Standards are revised periodically, therefore, we will make a maximum effort to offer solution complying with the latest version, however, we may not catch up and we cannot to offer solution depending on what is revised.